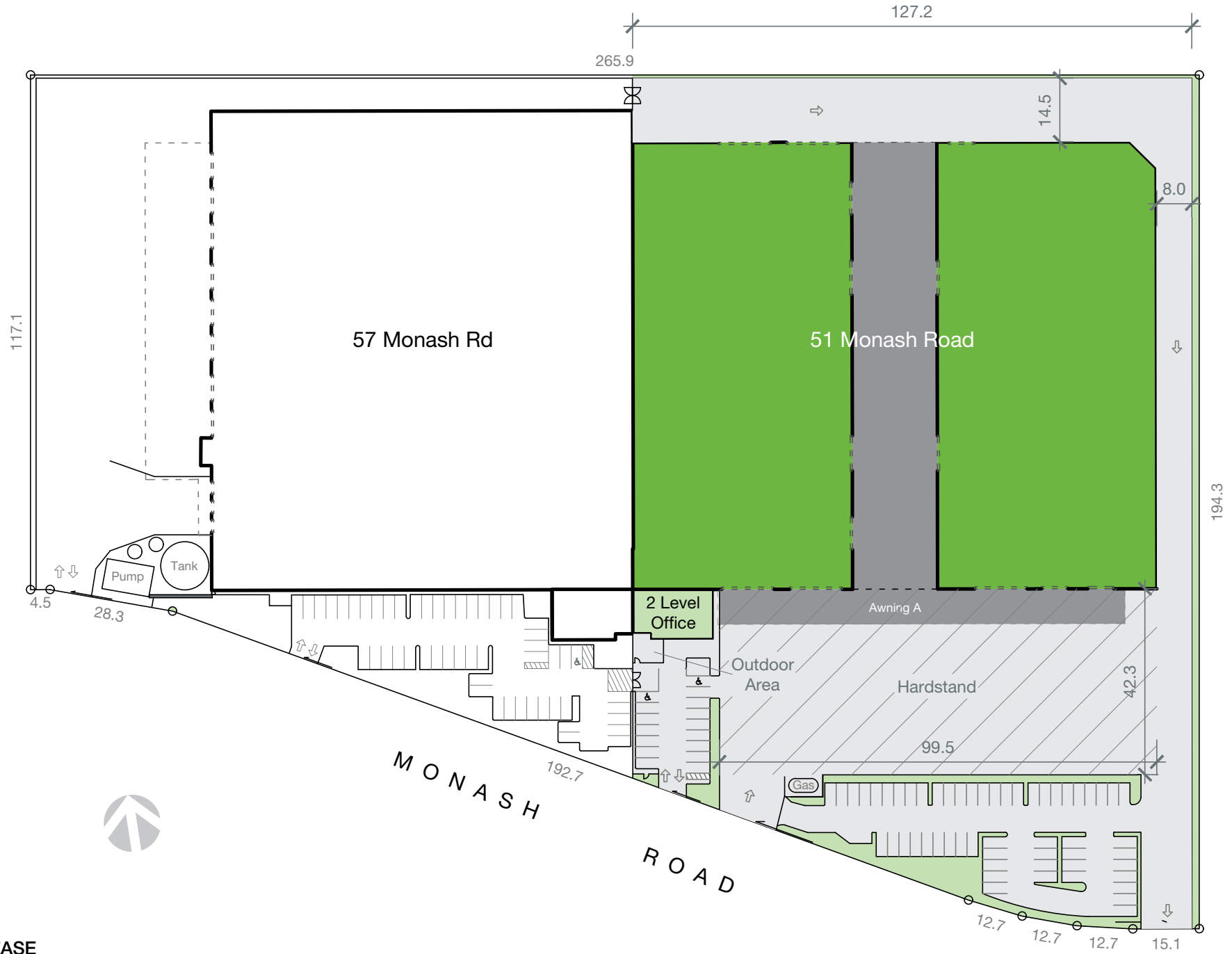


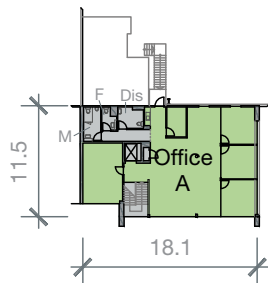
SITE PLAN - EXISTING



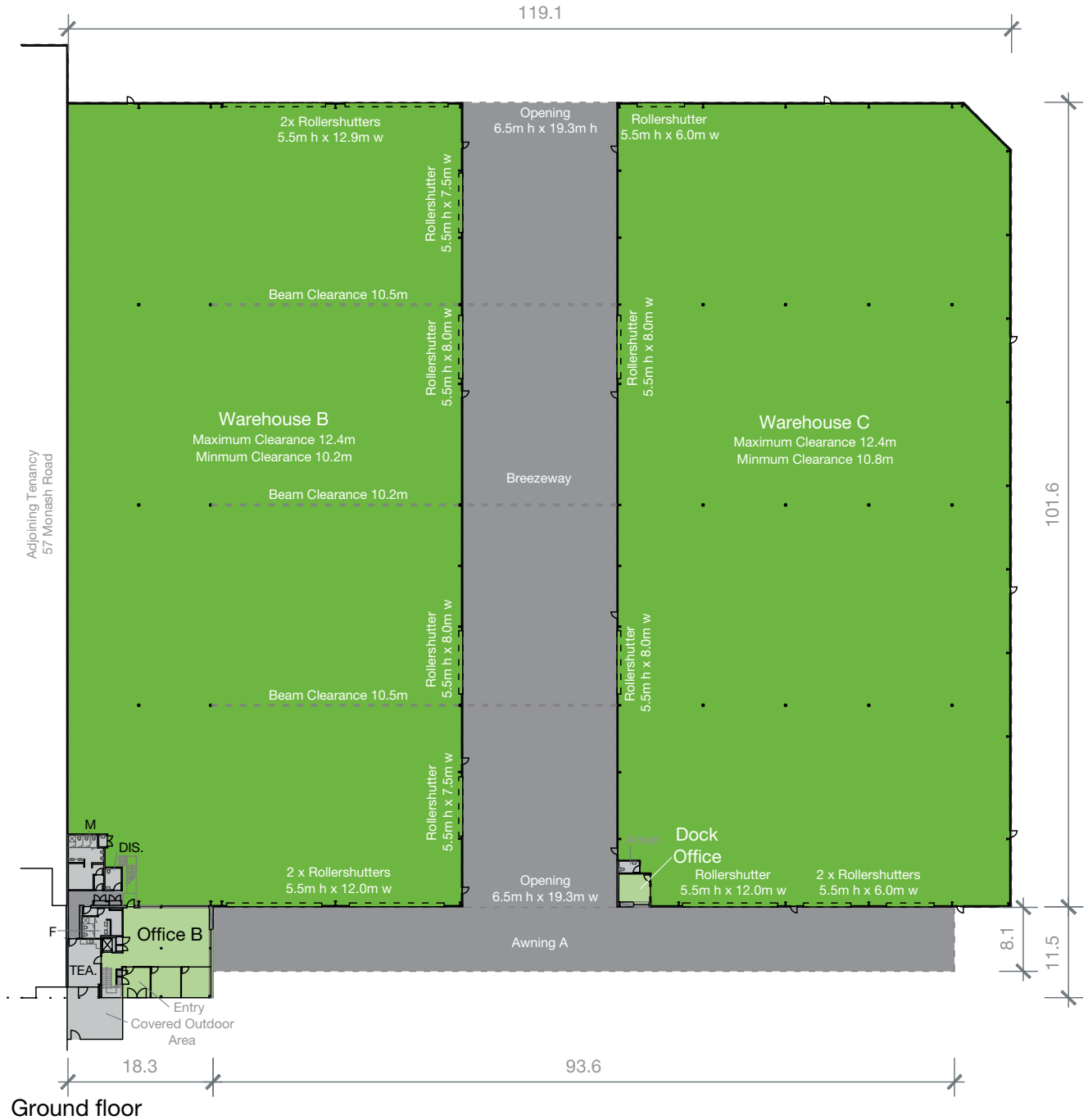
■ FOR LEASE

WAREHOUSE B AND C – EXISTING

AREA SCHEDULE	SQM
Ground floor	
Warehouse B	5,018
Office and amenities	260
Warehouse C	5,033
Dock office and amenities	23
Breezeway	1,967
First floor	
Office and amenities	204
Total building area	12,505
Awning A	745



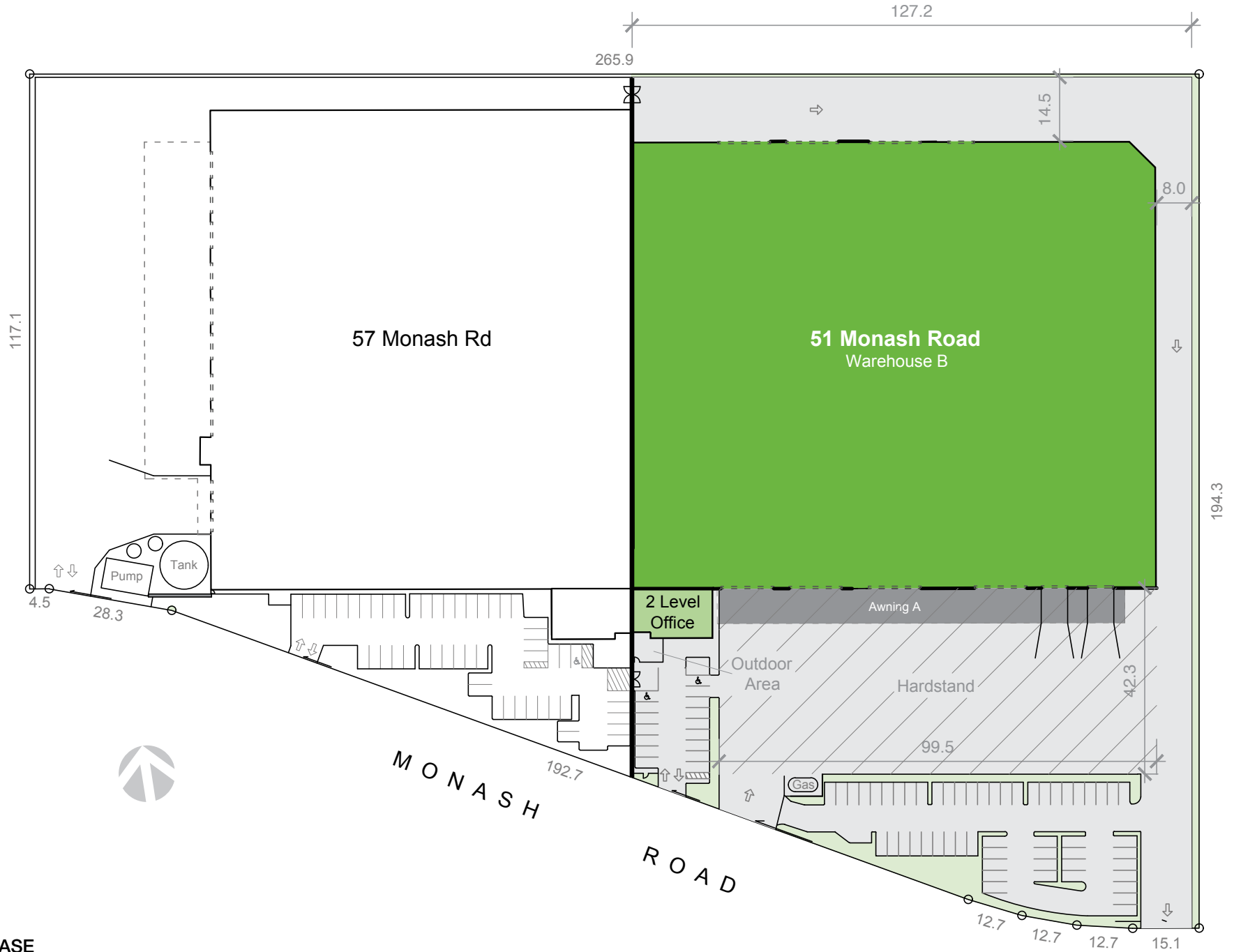
First floor



Ground floor

■ FOR LEASE

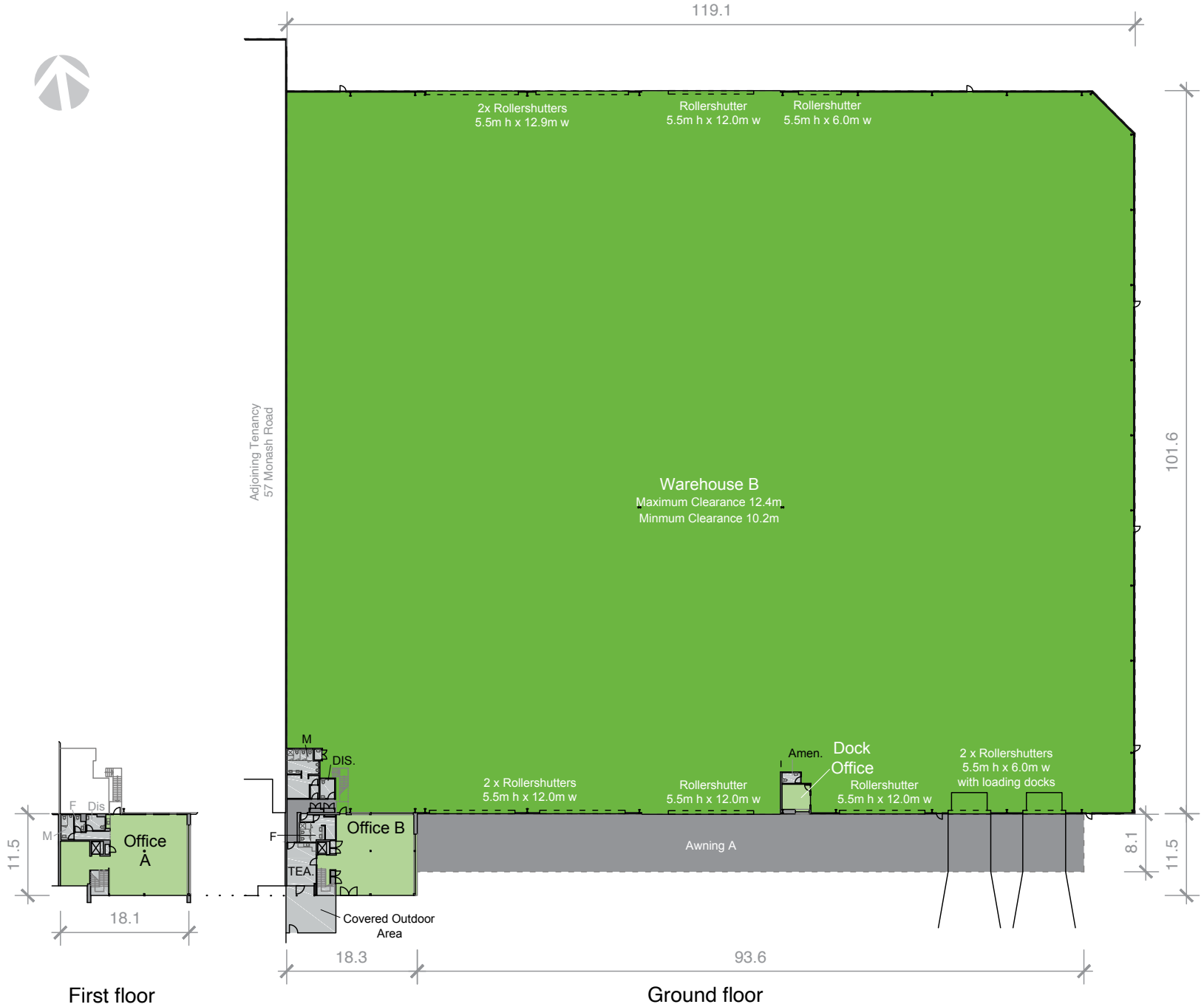
SITE PLAN - OPTION 1



■ FOR LEASE

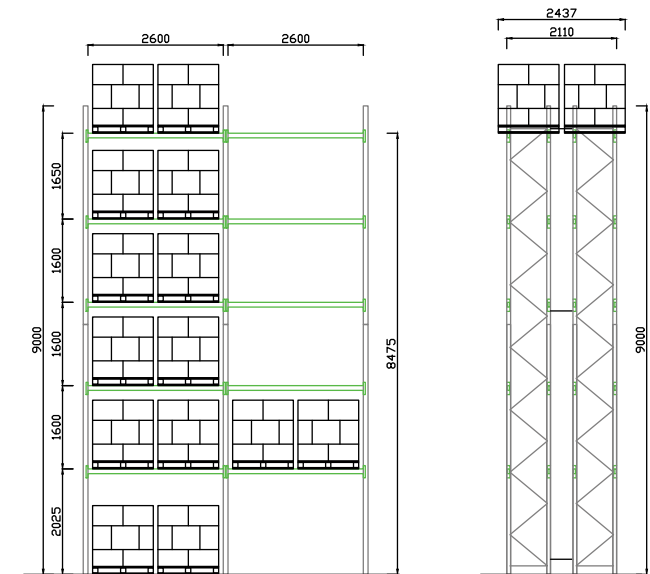
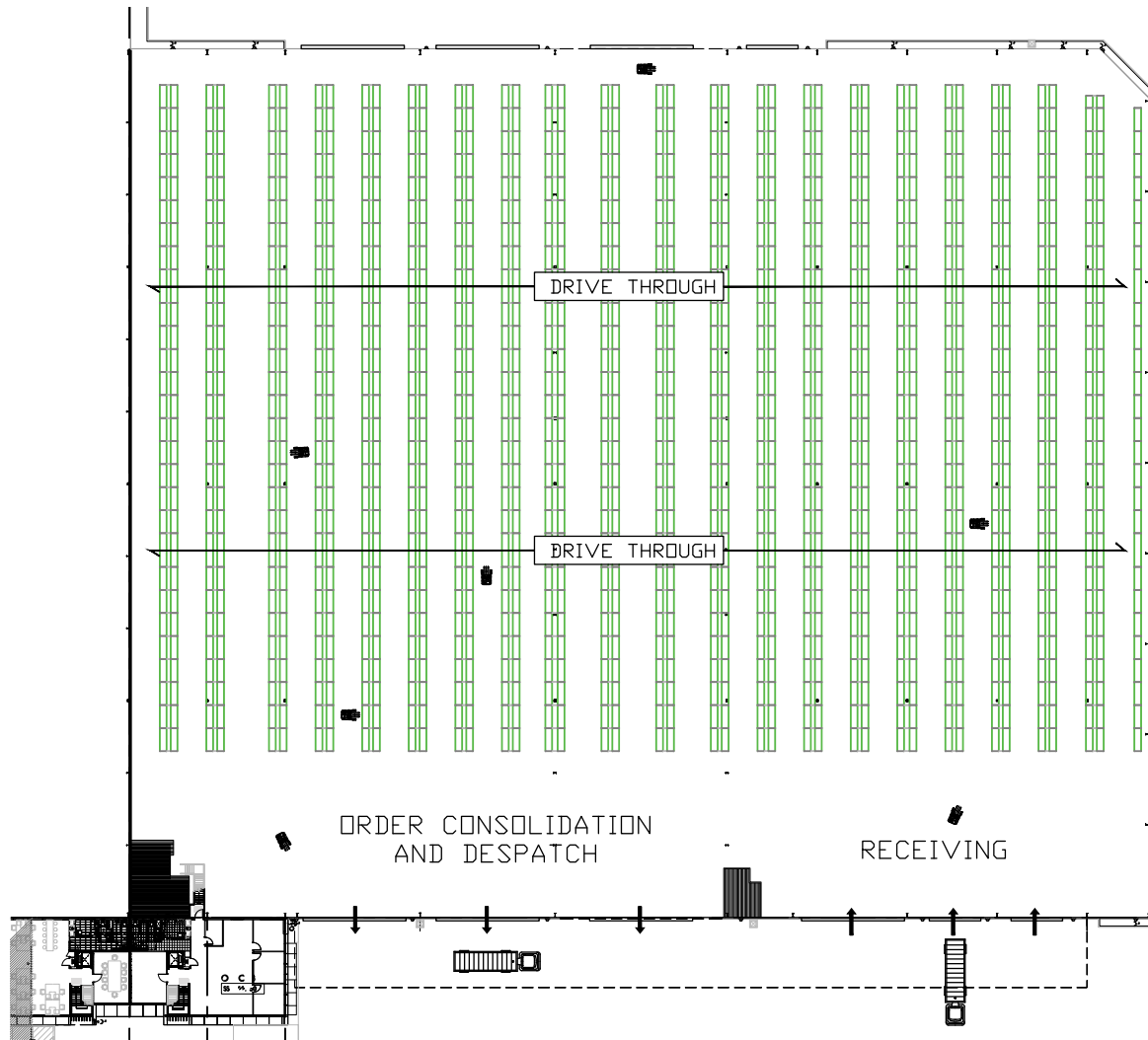
WAREHOUSE B – OPTION 1

AREA SCHEDULE	SQM
Ground floor	
Warehouse B	12,018
Office B and amenities	260
Dock office and amenities	23
First floor	
Office A and amenities	204
Total building area	12,505
Awning A	745



■ FOR LEASE

INDICATIVE RACKING PLAN

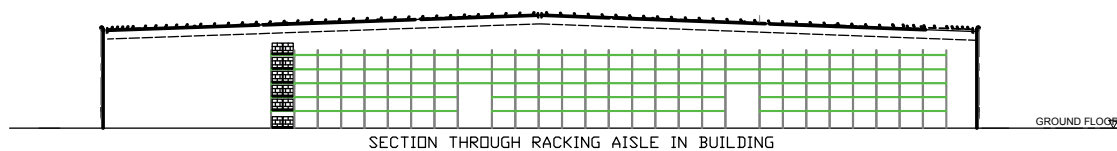


TYPICAL RACK ELEVATIONS

NOTES

1. Racking Designed to AS4048:2012 - Steel Storage Racking Including Provisions of AS1170-Part 4 - Earthquake Design.
2. Designed For Reach Truck Operation.
3. Nominal Pallet Dimensions 1165 x 1165 x 1425mm High.

TOTAL PALLET CAPACITY = 13,380



SECTION THROUGH RACKING AISLE IN BUILDING