



**GOOD IS
PRIME
POSITION**

**GREAT IS
WHAT YOU DO
FROM HERE**

Interchange Park
19A Interchange Drive
Eastern Creek, NSW

MAKING
SPACE
FOR
GREATNESS



Strategic location



Interchange Park is a premium industrial estate located in the logistics hub of Eastern Creek, and enjoys excellent exposure and access to the M4 and M7 Motorways.

Zoned General Industrial, the estate is ideal for a wide range of uses including warehouse, distribution and manufacturing.

A limited opportunity to lease 6,809 sqm of quality warehouse and office space is now available in this tightly held precinct.

VIEW FROM ABOVE





Eastern Creek is a strategically held location allowing users such as Myer, Ingram Micro and Bunnings to consolidate operations, optimise cost-efficiencies and modernise e-commerce supply chain networks.

Interchange Park is located directly adjacent to the nexus of the M4 and M7 Motorways providing unrivalled access to Sydney's arterial road network.

ON-SITE
CAFE

1.4KM
to M7 Motorway

1.8KM
to M4 Motorway

11.4KM
to Blacktown

38.2KM
to Sydney CBD

CENTRAL
CONNECTION

Key area statistics



4.1m
TOTAL POPULATION



1.4m
TOTAL HOUSEHOLDS



\$249.2bn
TOTAL PURCHASING POWER

Total spend on



\$7.3bn
CLOTHING



\$23.0bn
FOOD + BEVERAGE



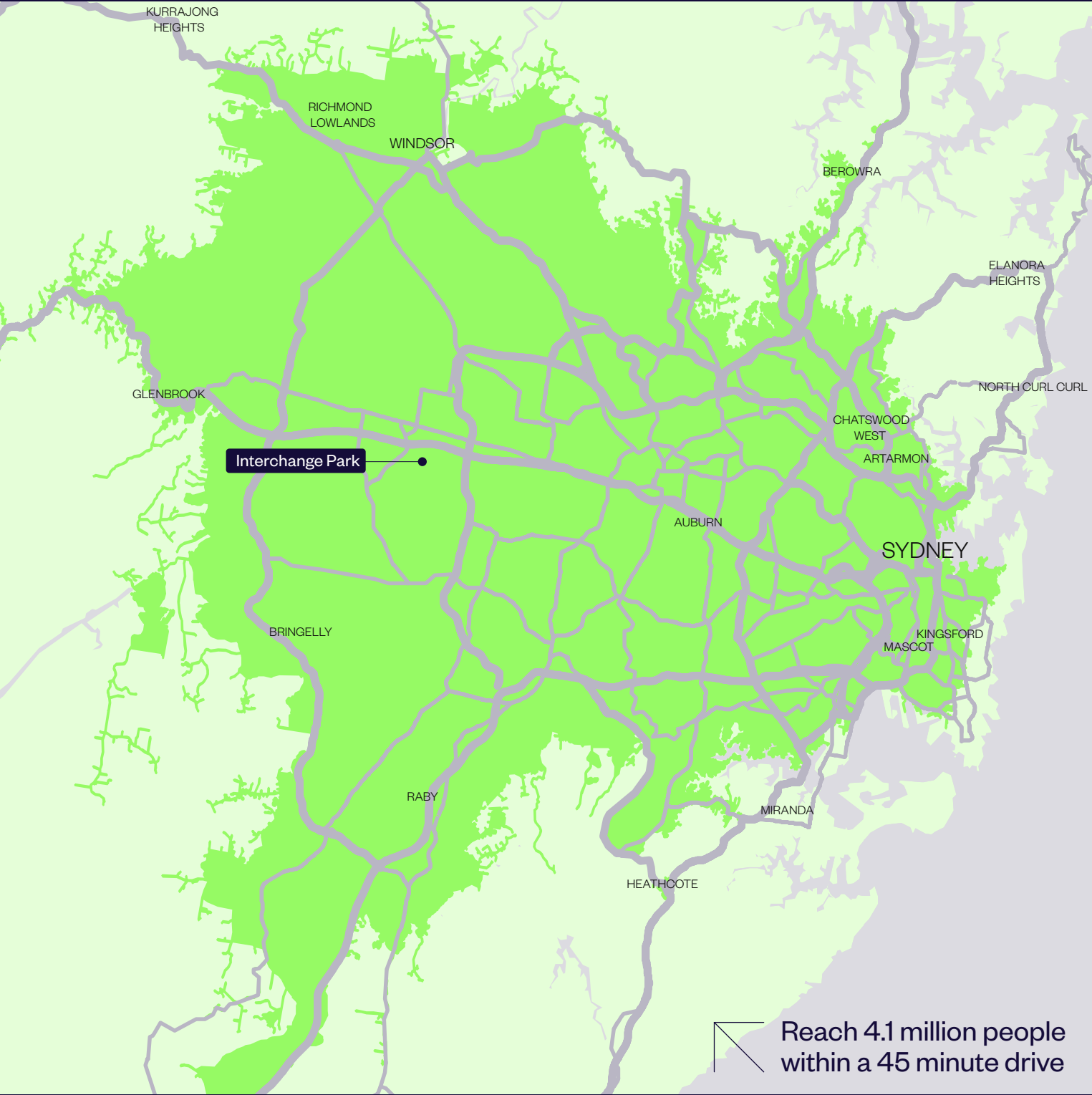
\$5.6bn
PERSONAL CARE



\$1.2bn
ONLINE SHOPPING

WITHIN
45 MINUTE
DRIVE TIME

Source: Esri and Michael Bauer Research



Reach 4.1 million people
within a 45 minute drive

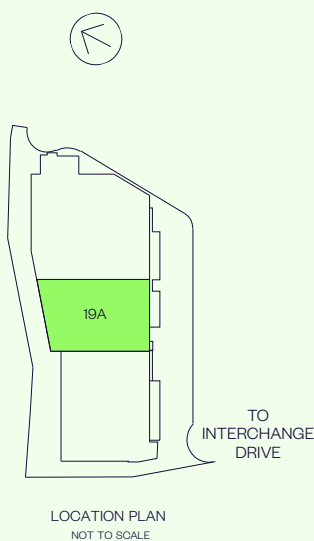
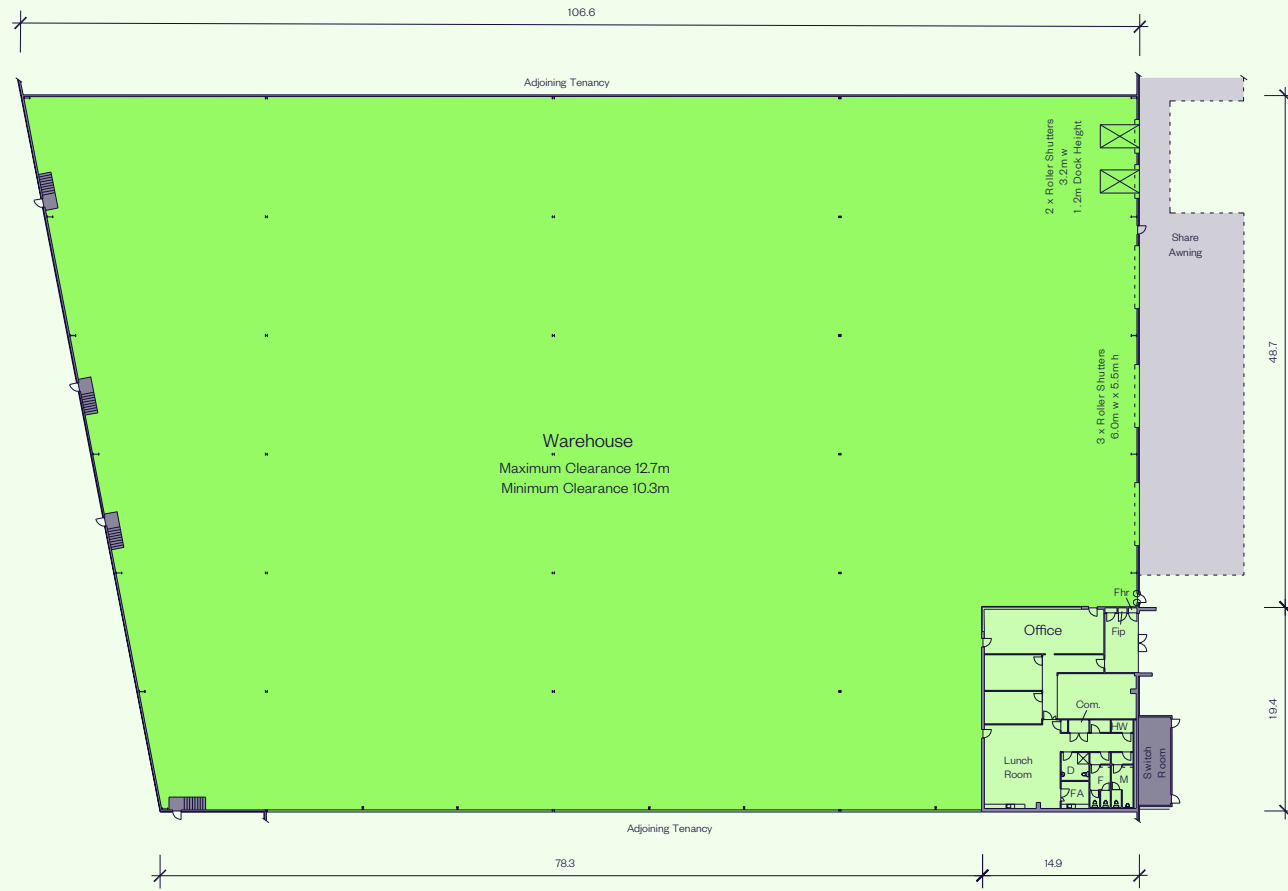
FEATURES

- + Quality 6,521 sqm warehouse
- + Internal clearance up to 12.7m
- + 289 sqm office space
- + Access via multiple on-grade roller shutters and recessed docks
- + Awning provides all-weather loading
- + Ample on-site parking.



UNIT 19A PLAN

AREA SCHEDULE	SQM
Ground floor	
Warehouse	6,520.5
Office	288.7
Total building area	6,809.2



Our teams provide progressive insights to business needs in an ever-changing world



Customer focus

Dedicated Building Managers provide on-site support for day-to-day operations, while Property and Asset Managers are available to discuss leasing, administration or modifications to tenancies.

Presentation

Our property services teams attend to your operational needs and provide unparalleled maintenance and presentation standards.

SERVICE

We aim to be leaders in environment, social and governance – with a long-term, sustainable approach that leads to positive economic, environmental and social outcomes for our business, our stakeholders and the world more broadly.



Here’s a snapshot of some of our initiatives across our Australian portfolio.

Carbon neutral organisation

Goodman proactively monitors the carbon footprint under our operational control. We purchase 100% renewable electricity and offset residual emissions with high quality carbon offsets to achieve carbon neutral in operations certification via Climate Active.

Climate resilience

Goodman has several control measures in place to future-proof our portfolio, keep our customers safe, and mitigate against the risks of climate change. These measures include installation of solar PV, inspections of structure and façade, roof audits, landscape maintenance and potable water monitoring.

Solar

We have installed over 66MW of rooftop solar on more than 200 of our buildings in Australia. That’s more than 200,000 solar panels – enough to power 15,700 homes, or the equivalent of taking 34,000 passenger vehicles off the road.

LED lighting and motion sensors

100% of the portfolio has LED lighting and motion sensors. This will support energy efficient operations, and provides optimum lighting comfort for our customers.

Electric vehicle charging

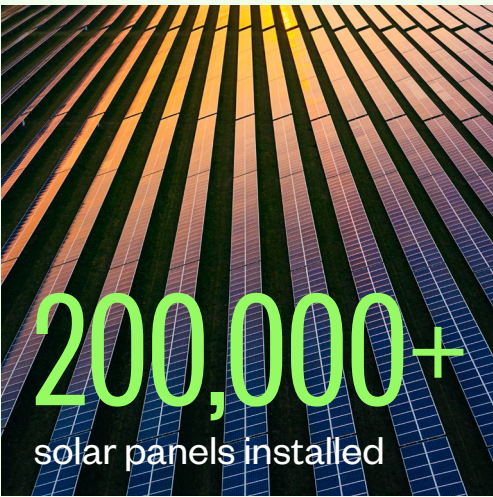
We recognise our role in preparing our estates, our people, and our customers for a zero emissions future. We’re supporting the switch to EVs by transitioning our own fleet and encouraging our people to purchase EVs, providing dedicated EV bays and charge points at all new developments, and collaborating with our customers on their electric vehicle requirements.

Building certifications

Goodman is targeting 5 star Green Star Buildings rating on all new warehouse developments. This third-party certification demonstrates best practice in environmentally sustainable design.

Active water monitoring and management

Goodman have implemented several sustainable landscaping initiatives in an effort to reduce potable water consumption across the portfolio. These include rainwater tanks, smart potable water meters and drought tolerant planting.



Sustainability

FIRST NATIONS ENGAGEMENT



We acknowledge the Aboriginal and Torres Strait Islander Traditional Custodians of the land on which we work and live. We pay respect to Elders past, present and emerging. We value their custodianship of over 65,000 years.



Artist Danielle Mate with her artwork created for Goodman's Reflect RAP.

As a business that works across many locations, we have a responsibility to listen, learn and walk alongside First Nations peoples to ensure our activities support the continuing of connection to their land, waters, cultures, languages and traditions.

Goodman received formal endorsement of our Reflect RAP. We have clear commitments around the core pillars of relationships, respect and opportunities.

Our RAP journey is ongoing, and we're determined to make a difference.

GOODMAN FOUNDATION

The Goodman Foundation unites our people, properties and resources to make a tangible difference to the lives of people in our communities. Through our partnerships with an exceptional – and often grassroots – group of charities, we’re able to make a real difference, where and when it matters most.



Above: Clontarf Foundation
Bottom L-R: Clontarf Foundation,
Thread Together, Bestest Foundation

How we do good in the world

The Goodman Foundation offers support to charities within three key areas:

Children and youth

Charity organisations who help protect, nurture and support children or young people.

Food rescue and environment

Charity organisations who reduce waste and support those in need by redistributing fresh food or useful items that would otherwise go to landfill.

Community and community health

Charity organisations who support those living with a condition, illness or disability, or whose efforts help to create a more inclusive and equitable community.

LEARN MORE ABOUT THE
GOODMAN FOUNDATION



CONTACT



ENQUIRE NOW

Eliza Shipway
Senior Property Manager

T. 02 9230 7370
M. 0487 777 168
eliza.shipway@goodman.com

Angus McKay
Portfolio Manager

T. 02 9230 7300
M. 0415 324 132
angus.mckay@goodman.com

Goodman
The Hayesbery
1-11 Hayes Road
Rosebery NSW 2018
T. 02 9230 7400

[VIEW THIS PROPERTY ONLINE](#)

