



GOOD IS HAVING FLEXIBILITY

GREAT IS WHAT YOU DO FROM HERE

Erskine Park Industrial Estate
15-83 Quarry Road
Erskine Park, NSW

MAKING
SPACE
FOR
GREATNESS



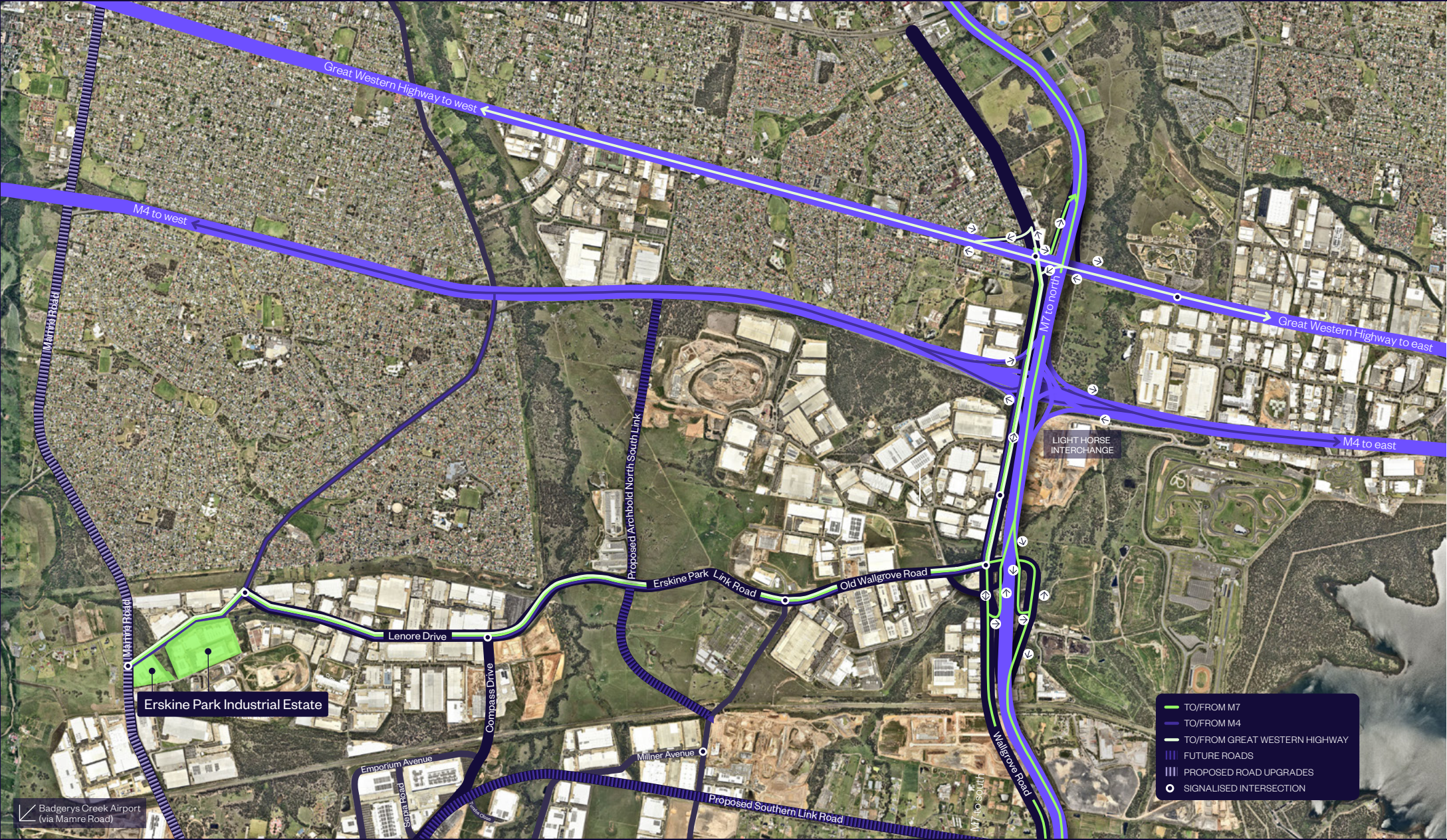
Strategic location



Erskine Park Industrial Estate is positioned just off Erskine Park Road and Mamre Road, the estate enjoys close proximity to the M4 and M7 Motorways providing excellent speed to market.

Secure premium warehouse and office space with options to split in this tightly held precinct.

VIEW FROM ABOVE



4.7KM

to M4 Motorway

5.3KM

to Erskine Park
Shopping Centre

9.8KM

to St Marys Station

15.9KM

to M7 Motorway

Easy
access

Key area statistics



3.6m
TOTAL POPULATION



1.2m
TOTAL HOUSEHOLDS



\$174.2bn
TOTAL PURCHASING POWER

Total spend on



\$4.7bn
CLOTHING



\$15.6bn
FOOD + BEVERAGE



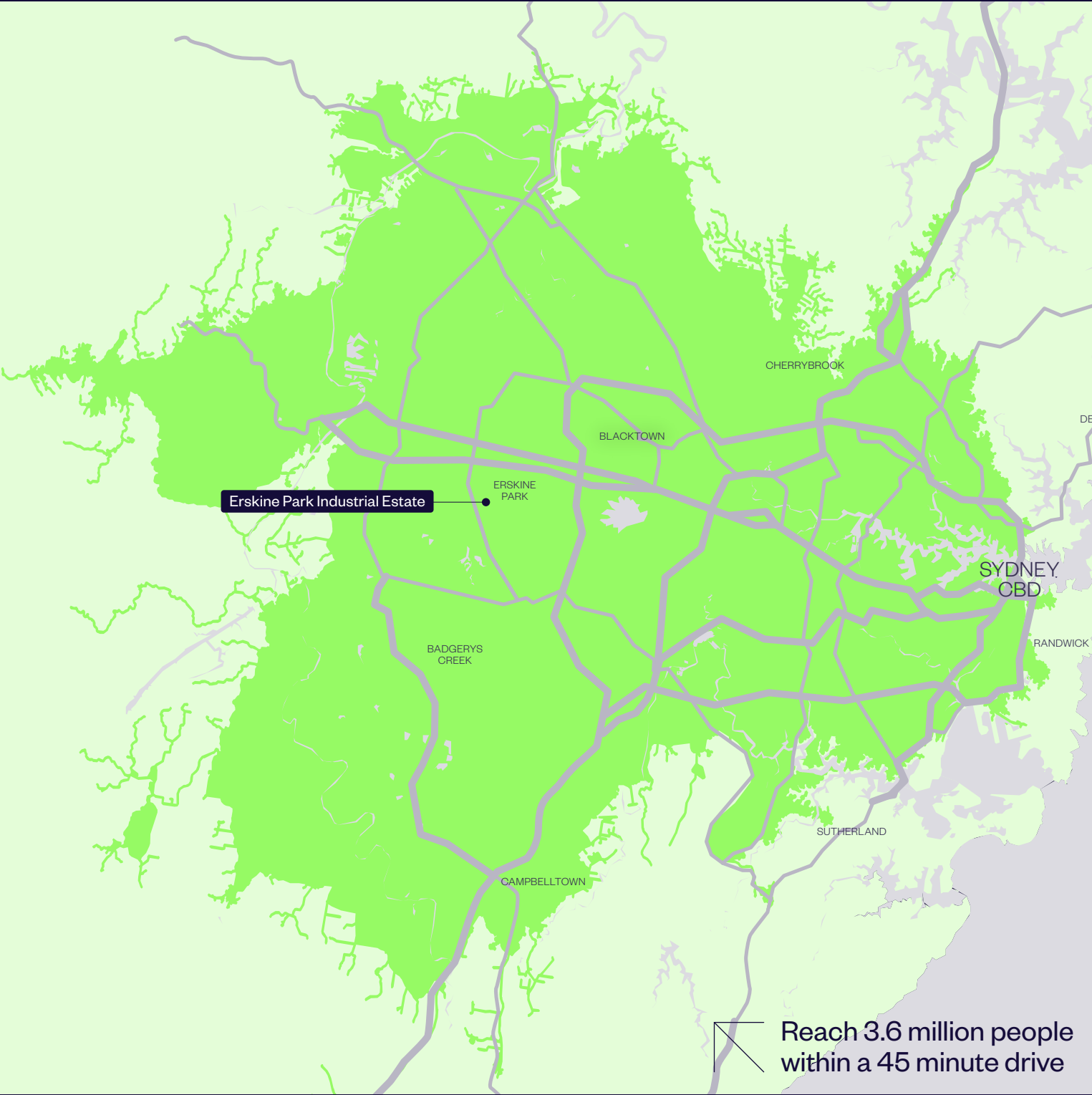
\$3.8bn
PERSONAL CARE



\$1.0bn
ONLINE SHOPPING

WITHIN
45 MINUTE
DRIVE TIME

Source: Esri and Michael Bauer Research



FEATURES

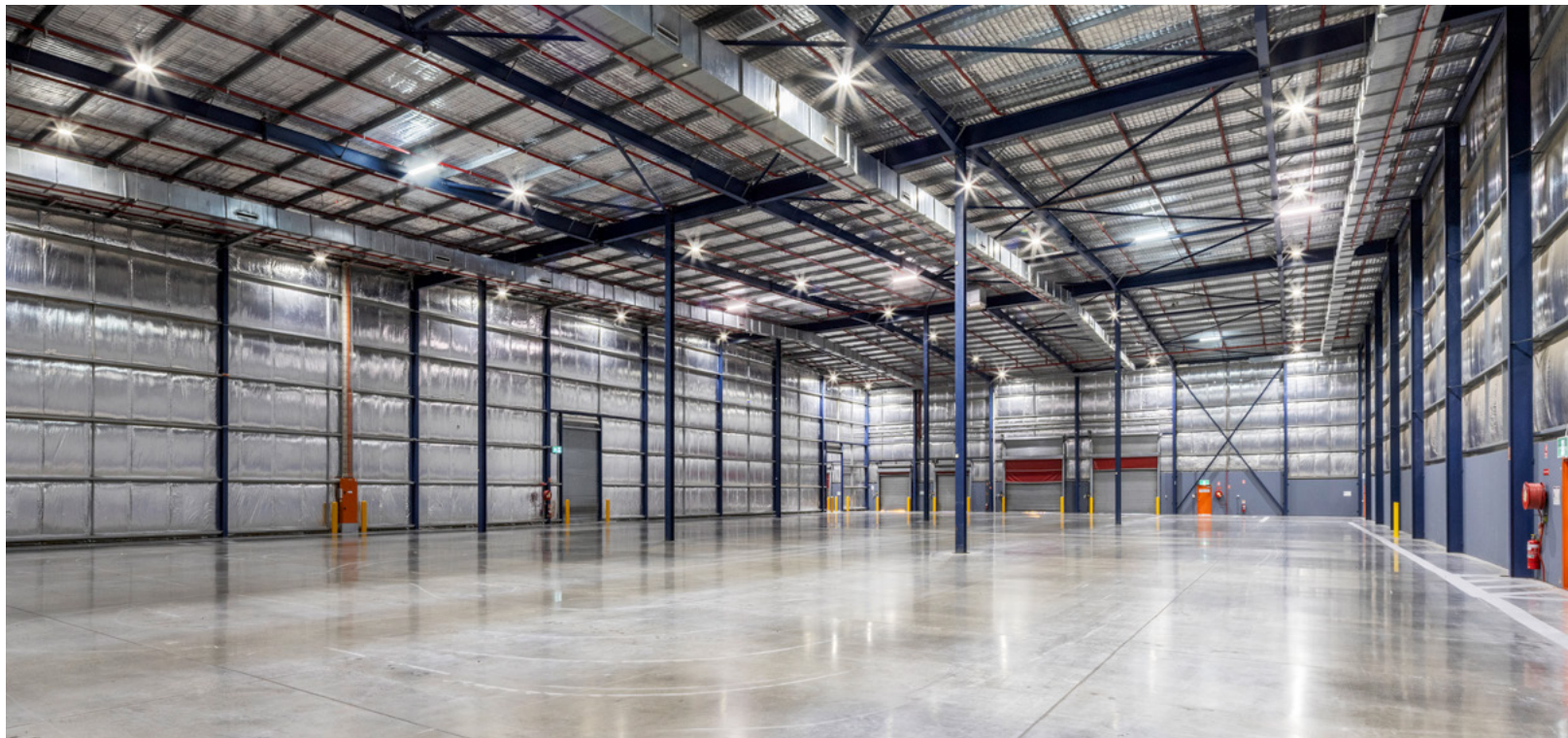
Building B

- + Modern 10,564 sqm standalone warehouse and office facility
- + Opportunity to split the warehouses
- + Can offer up to 5,300 sqm of temperature controlled space
- + LED lighting throughout
- + ESFR sprinklers
- + Combination of on-grade roller shutters and recessed docks.



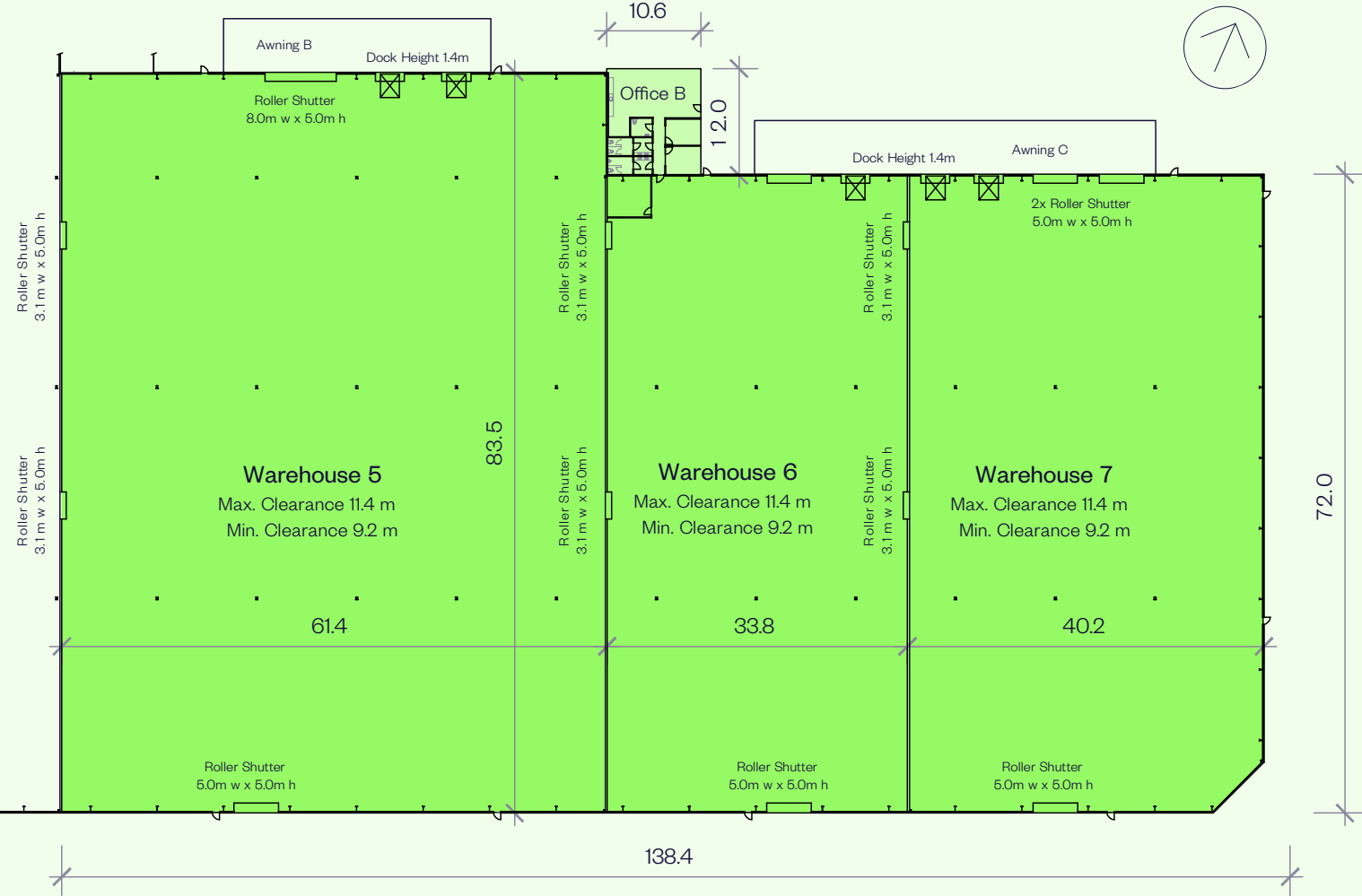
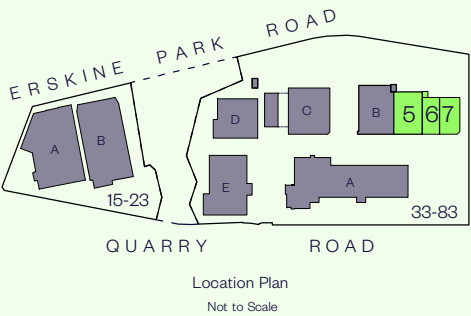
Building C

- + Quality 9,732 sqm warehouse and office space
- + Separate standalone office
- + Combination of on-grade roller shutters and recessed docks
- + Large drive-through awning providing all-weather loading
- + Suitable for tyre storage.



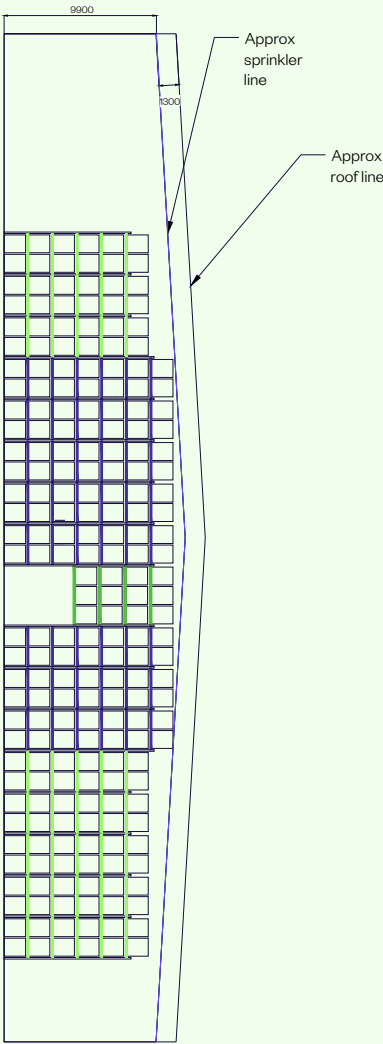
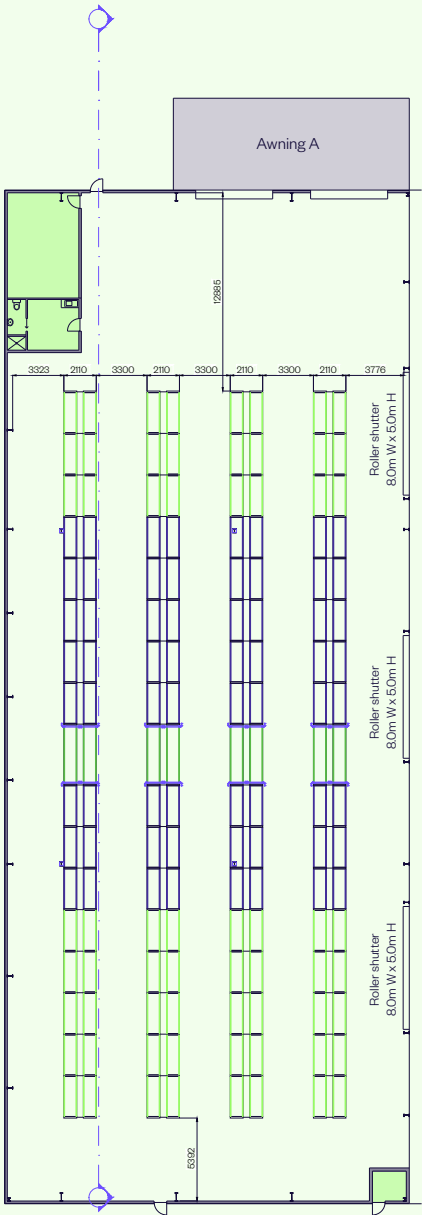
BUILDING B PLAN

AREA SCHEDULE	SQM
Building B	
Warehouse 5	5,126.8
Warehouse 6	2,435.1
Warehouse 7	2,874.8
Office B	127.4
Total building area	10,564.1

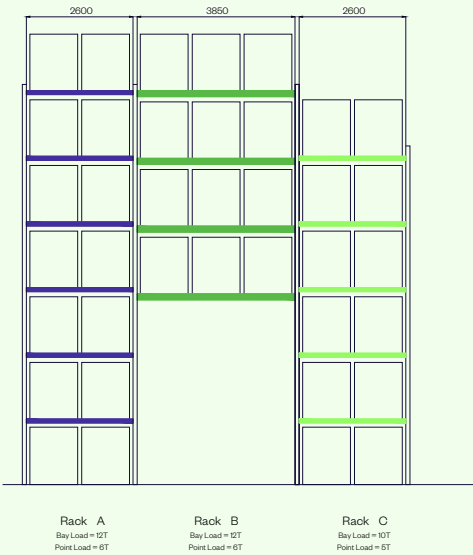
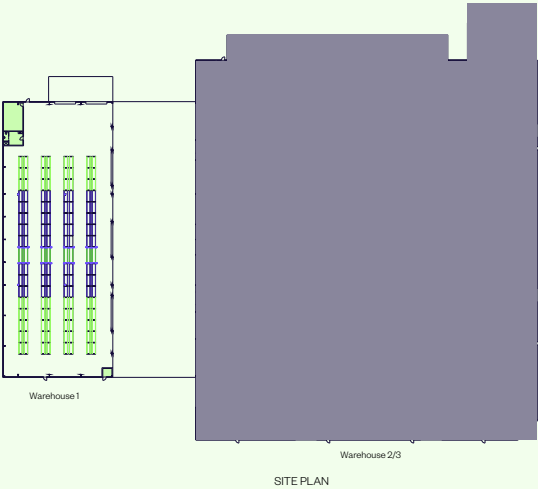


BUILDING C WAREHOUSE 1 RACKING PLAN

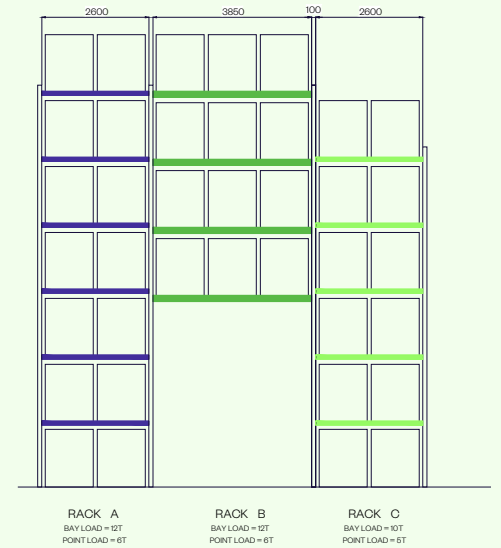
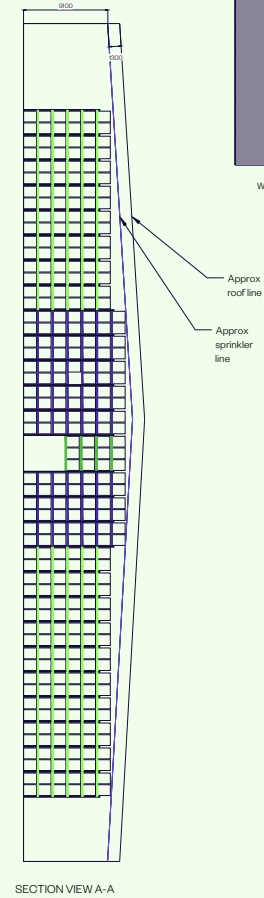
Total pallet spaces 1,732



Section view A-A



Total pallet spaces	9,504
---------------------	-------



Our teams provide progressive insights to business needs in an ever-changing world



Customer focus

Dedicated Building Managers provide on-site support for day-to-day operations, while Property and Asset Managers are available to discuss leasing, administration or modifications to tenancies.

Presentation

Our property services teams attend to your operational needs and provide unparalleled maintenance and presentation standards.

SERVICE

We aim to be leaders in environment, social and governance – with a long-term, sustainable approach that leads to positive economic, environmental and social outcomes for our business, our stakeholders and the world more broadly.



Here's a snapshot of some of our initiatives across our Australian portfolio.

Procurement

To ensure the products and services we purchase don't harm people or the planet, we're working step-by-step with our suppliers and contractors. On the horizon are clear targets and minimum expectations for our supply chain partners. But for now, we are working together to set a baseline and understand obstacles and opportunities.

Climate resilience

Goodman has several control measures in place to future-proof our portfolio, keep our customers safe, and mitigate against the risks of climate change. These measures include inspections of structure and façade, roof audits, landscape maintenance and potable water monitoring.

Solar

We have installed over 66MW of rooftop solar on more than 200 of our buildings in Australia. That's more than 200,000 solar panels – enough to power 15,700 homes, or the equivalent of taking 34,000 passenger vehicles off the road.

LED lighting + motion sensors

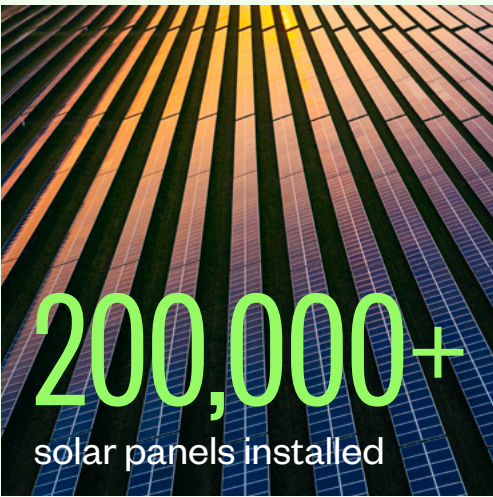
100% of the portfolio has LED lighting and motion sensors installed. This reduces energy consumption and provides optimum lighting comfort for our customers.

Electric vehicle future

We recognise our role in preparing our estates, our people, and our customers for an EV future. We're supporting the switch to EVs by transitioning our own fleet and encouraging our people to purchase EVs, providing dedicated EV bays and charge points at all new developments, and collaborating with our customers.

Sustainable landscaping

- + We have installed tanks to harvest rainwater
- + Our properties use smart potable water metering that allows proactive management of water consumption across the portfolio
- + All handheld equipment used in landscaping and cleaning work at our properties is battery operated
- + We use drought tolerant plants combined with ballast rock
- + We recycle our green waste, and as a result, have processed approximately 500 cubic metres of green waste to date
- + At Eastern Creek in NSW, we built a fully sustainable garden comprising 23 edible garden beds with stingless native bees, compost, worm farm and permaculture practices
- + We use steam weed control which surpasses the chemical Glyphosate.



Sustainability

INCLUSION AND DIVERSITY

Central to our purpose of “making space for greatness” is creating an environment where I&D is embedded into everything we do.

We work to create a culture where our people are valued and have the opportunity to realise their potential.

We are all accountable for making it a reality. Our people are champions of openness, fairness and respect.



At Goodman, we lead the way in inclusion and diversity

FIRST NATIONS ENGAGEMENT



We acknowledge the Aboriginal and Torres Strait Islander Traditional Custodians of the land on which we work and live. We pay respect to Elders past, present and emerging. We value their custodianship of over 65,000 years.



Artist Danielle Mate with her artwork created for Goodman's Reflect RAP.

As a business that works across many locations, we have a responsibility to listen, learn and walk alongside First Nations peoples to ensure our activities support the continuing of connection to their land, waters, cultures, languages and traditions.

Goodman received formal endorsement of our Reflect RAP. We have clear commitments around the core pillars of relationships, respect and opportunities.

Our RAP journey is ongoing, and we're determined to make a difference.

GOODMAN FOUNDATION

The Goodman Foundation unites our people, properties and resources to make a tangible difference to the lives of people in our communities. Through our partnerships with an exceptional – and often grassroots – group of charities, we’re able to make a real difference, where and when it matters most.



Above: Clontarf Foundation
Bottom L-R: Clontarf Foundation, Thread Together, Bestest Foundation

How we do good in the world

The Goodman Foundation offers support to charities within three key areas:

Children and youth

Charity organisations who help protect, nurture and support children or young people.

Food rescue and environment

Charity organisations who reduce waste and support those in need by redistributing fresh food or useful items that would otherwise go to landfill.

Community and community health

Charity organisations who support those living with a condition, illness or disability, or whose efforts help to create a more inclusive and equitable community.

LEARN MORE ABOUT THE GOODMAN FOUNDATION



CONTACT



ENQUIRE NOW

Angus McKay
Portfolio Manager
T. 02 9230 7300
M. 0415 324 132
angus.mckay@goodman.com

Eliza Shipway
Senior Property Manager
T. 02 9230 7370
M. 0487 777 168
eliza.shipway@goodman.com

Goodman
The Hayesbery
1-11 Hayes Road
Rosebery NSW 2018
T. 02 9230 7400

[VIEW THIS PROPERTY ONLINE](#) 