

LOT 3A, KEMPS CREEK, OAKDALE WEST ESTATE

MODIFICATION 1

DRAWING LIST

SHEET NO.	SHEET NAME
DA00	Cover Sheet
DA01	Perspectives
DA30	SITE PLAN
DA31	ROOF PLAN
DA32	OFFICE PLAN
DA35	WAREHOUSE ELEVATIONS
DA36	OFFICE ELEVATIONS
DA37	WAREHOUSE SECTIONS
DA39	SIGNAGE PLAN

Office elevation redesigned



1 PERSPECTIVE 01



2 PERSPECTIVE 02



PENRITH CITY COUNCIL

COUNCIL DOES NOT ATTEST TO THE ACCURACY OF DETAILS IN PLANS

This plan / document relates to Development Consent: **DA20/0843.02**

Subject to the conditions outlined in the consent



Oakdale West

Kemps Creek, NSW

Proposed Industrial Facility - Lot 3A

Development Application - Modification 1

Cover Sheet

27 MAY 2021

OAK 3A DA00 (A)

Job No 21116



Emmas Residential Aged Care

Basin

LEGEND

- Site Boundary
- Lot Boundary
- Building 7.5m Setback
- Landscape 3.75m Setback
- Building 17.15m Setback To Main Road
- Landscape 17.15m Setback to Main Road
- FNC-2 Palisade Fencing
- RW Retaining Wall

SERVICES LEGEND

- Sewer
- Stormwater
- Electricity

Fire services layout revised

40000 hardstand

COUNCIL DOES NOT ATTEST TO THE ACCURACY OF DETAILS IN PLANS

PENRITH CITY COUNCIL

This plan / document relates to Development Consent: DA20/0843.02

Subject to the conditions outlined in the consent

86571 warehouse

Emmas Catholic College

Add mechanical plant area

Office outline adjusted to reflect revised facade treatment

Lot 3B
Proposed Future Industrial Facility

Industrial Facility

Warehouse 3A
10,000 sqm
FFL 67.40 (+/- 500mm)

Office
(2 Level)
1,000sqm

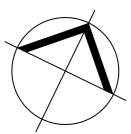
Estate Road 03

Lot 2B

Approved Industrial Facility
(Currently Under Construction)

Development Area Schedule

Site Area	21,283 sqm
Warehouse	10,000 sqm
Office (2 levels)	1,000 sqm
Total Building Area	11,000 sqm
Awning	1,155 sqm
Site Cover (exc. awning)	52 %
Floor Space Ratio	0.52
Hardstand Area	4,525 sqm
Light Duty Area	2,530 sqm
Carparking (inclusive of 2 disable spaces)	60



Oakdale West Estate

Kemps Creek, NSW

Proposed Industrial Facility - Lot 3A

Development Application - Modification 1

Site & Warehouse Plan

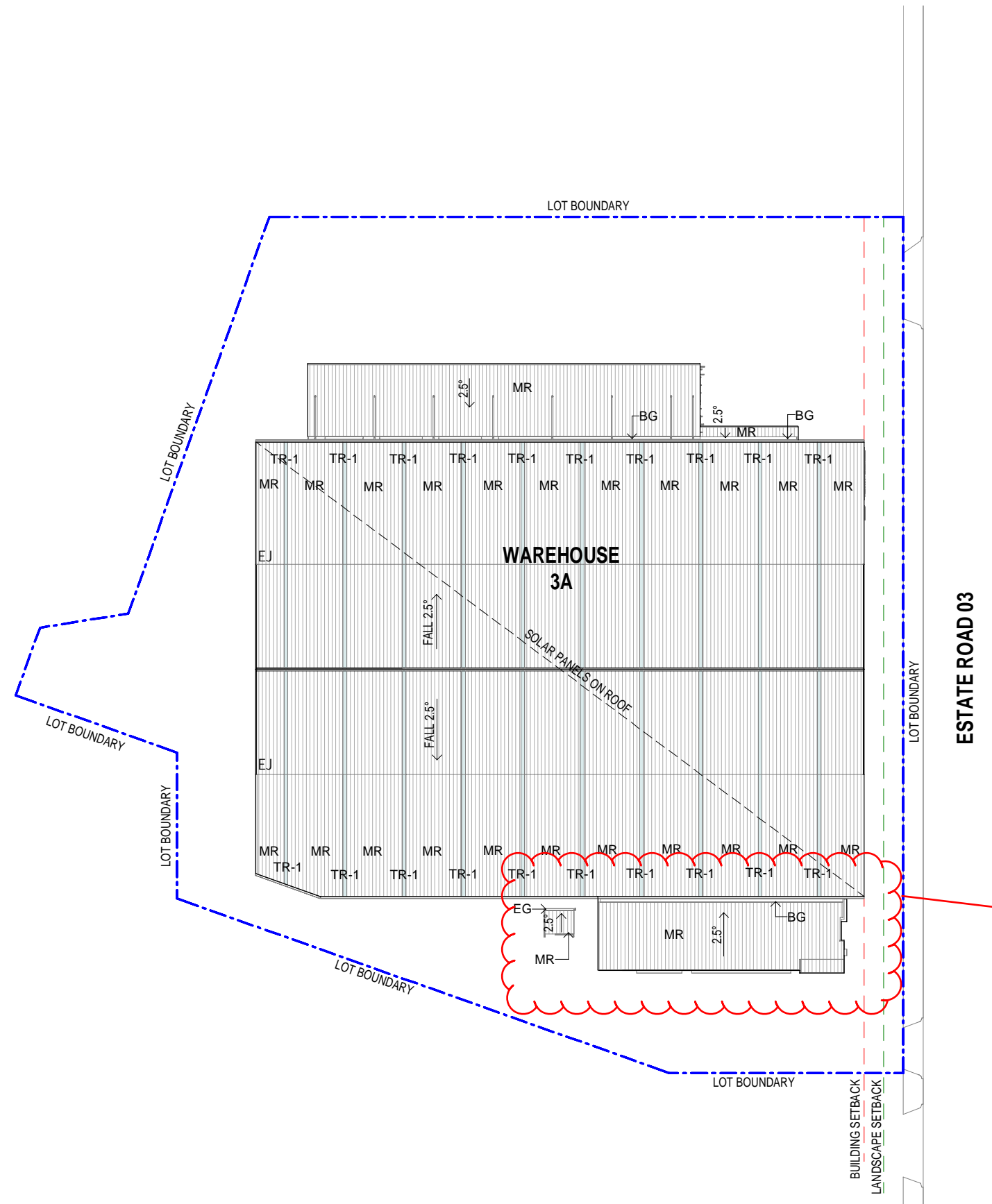
1:500 @ A1

1:1000 @ A3

15 June 2021

OAK 3A DA 30 (C)

Job No 21116

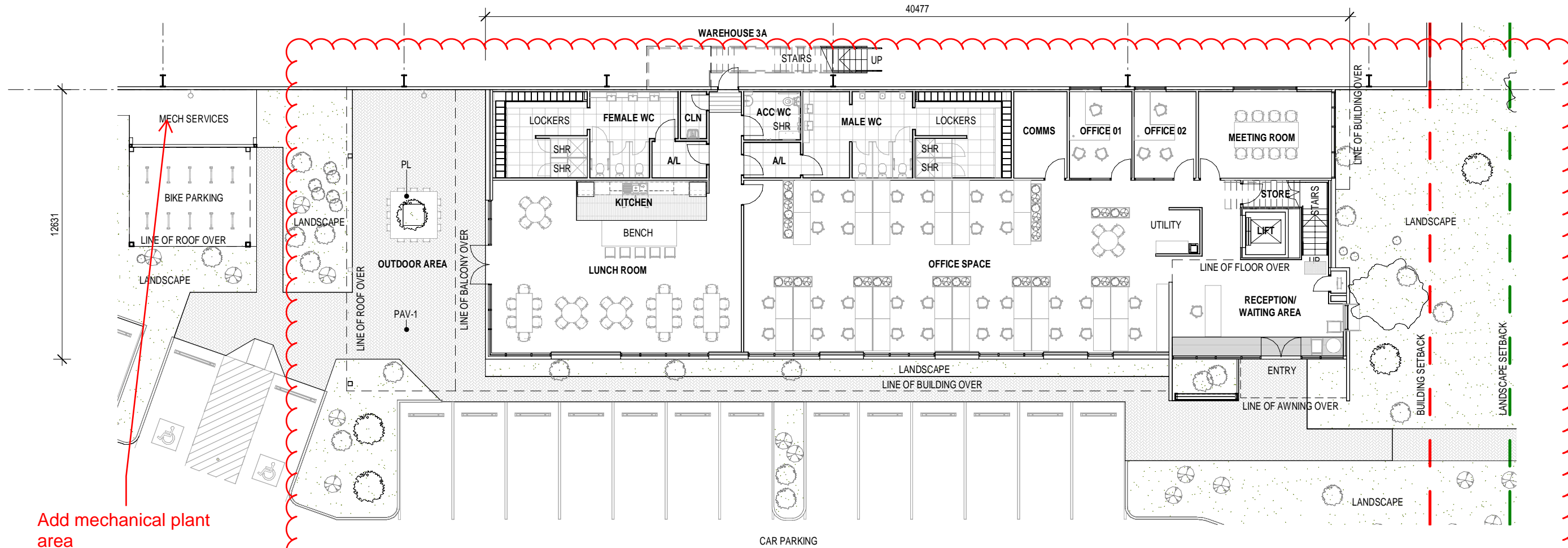


Office roof adjusted to reflect revised facade treatment

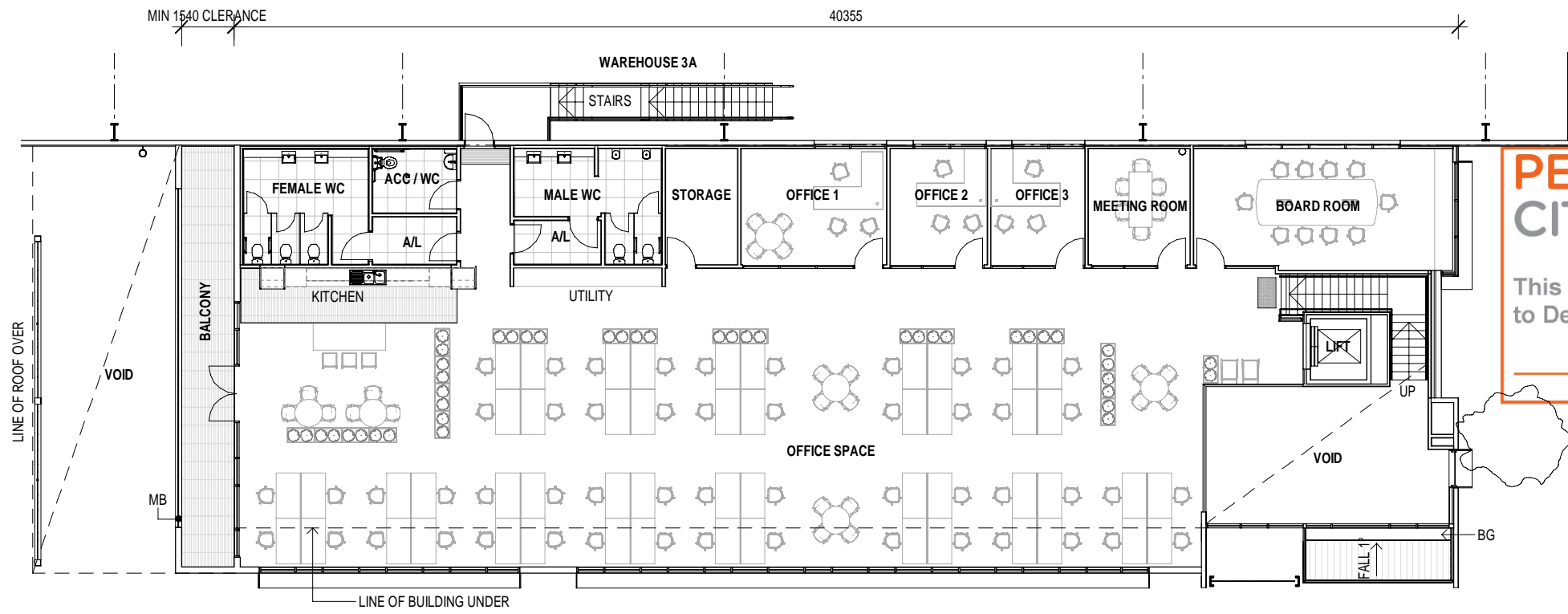
1 ROOF PLAN 1:1000

LEGEND	
BG	BOX GUTTER
EG	EAVES GUTTER
MR	METAL ROOF SHEETING
TR-1	TRANSLUCENT ROOF SHEETING





1 FLOOR PLAN - OFFICE GROUND 1:200



2 FLOOR PLAN - OFFICE LEVEL 01 1:200

PENRITH CITY COUNCIL
 This plan / document relates to Development Consent: **DA20/0843.02**
 Subject to the conditions outlined in the consent

COUNCIL DOES NOT ATTEST TO THE ACCURACY OF DETAILS IN PLANS

Office layout adjusted to suit new facade treatment



Office facade treatment redesigned

Wall cladding revised from Danpalon to metal cladding PMW-4 due to bushfire BAL rating

Office facade treatment redesigned

Office facade treatment redesigned

Wall cladding revised from Danpalon to metal cladding PMW-4 due to bushfire BAL rating

PENRITH CITY COUNCIL

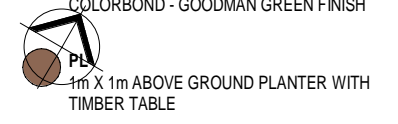
This plan / document relates to Development Consent: **DA20/0843.02**

Subject to the conditions outlined in the consent

COUNCIL DOES NOT ATTEST TO THE ACCURACY OF DETAILS IN PLANS

INDICATIVE EXTERNAL FINISHES LEGEND

- BRK-1** BRICKWORK TO EQUAL BOWRAL 300 GERTRUDIS BROWN 300 X 110 X 50mm. STACKED BOND WITH GREY MORTAR JOINTS
- AWN-1** STEEL AWNING. PAINT FINISH TO MATCH COLORBOND MONUMENT
- GL-1** CLEAR GLAZING - LIGHT GREY TINT OR SIMILAR
- MDR-1** METAL DECK ROOFING COLORBOND - SURFIMIST
- MRS** METAL ROLLER SHUTTER PREFINISHED IN SHALE GREY
- MESH-1** STAINLESS STEEL MESH IN METAL FRAME
- PCP-1** PRECAST CONCRETE PANEL WITH "NAWKAW PERMATINT PAINT FINISH"
- PCP-2** PRECAST CONCRETE DADO PANEL PAINT FINISH
- PMW-1** PREFINISHED METAL WALL SHEET CLADDING COLORBOND - MONUMENT FINISH (OR SIMILAR)
- SC** STAINLESS STEEL CABLE
- PMW-2** PREFINISHED METAL WALL SHEET CLADDING COLORBOND - GOODMAN GREEN FINISH
- PMW-3** PREFINISHED STANDING SEAM PROFILE METAL CLADDING EQUAL TO FILTERS PROMINENCE FINESSE IN COLOURBOND MONUMENT FINISH
- PMW-4** PREFINISHED METAL WALL SHEET CLADDING COLOURBOND - SHALE GREY
- TRS-1** TRANSLUCENT ROOF SHEET. OPAL COLOUR
- WH-1** STEEL WINDOW HOOD. COLORBOND MONUMENT FINISH (OR SIMILAR)
- FRM** PREFINISHED ALUMINIUM WINDOW FRAME POWDER COATING IN BLACK
- DP-1** DOWNPIPE COLOUR TO MATCH BACKGROUND CLADDING COLOUR
- PAV-1** PAVER, GREY BRICK, HERRINGBONE PATTERN
- TMB** TIMBER LOOK PANELS, ALUMINIUM CLIK ON PANELS, SCULPTFORM
- MB** WELDED SOLID METAL BAR BALUSTRADE. PAINT FINISH



PENRITH CITY COUNCIL

COUNCIL DOES NOT ATTEST TO THE ACCURACY OF DETAILS IN PLANS

This plan / document relates to Development Consent: **DA20/0843.02**

Subject to the conditions outlined in the consent

Office facade treatment redesigned

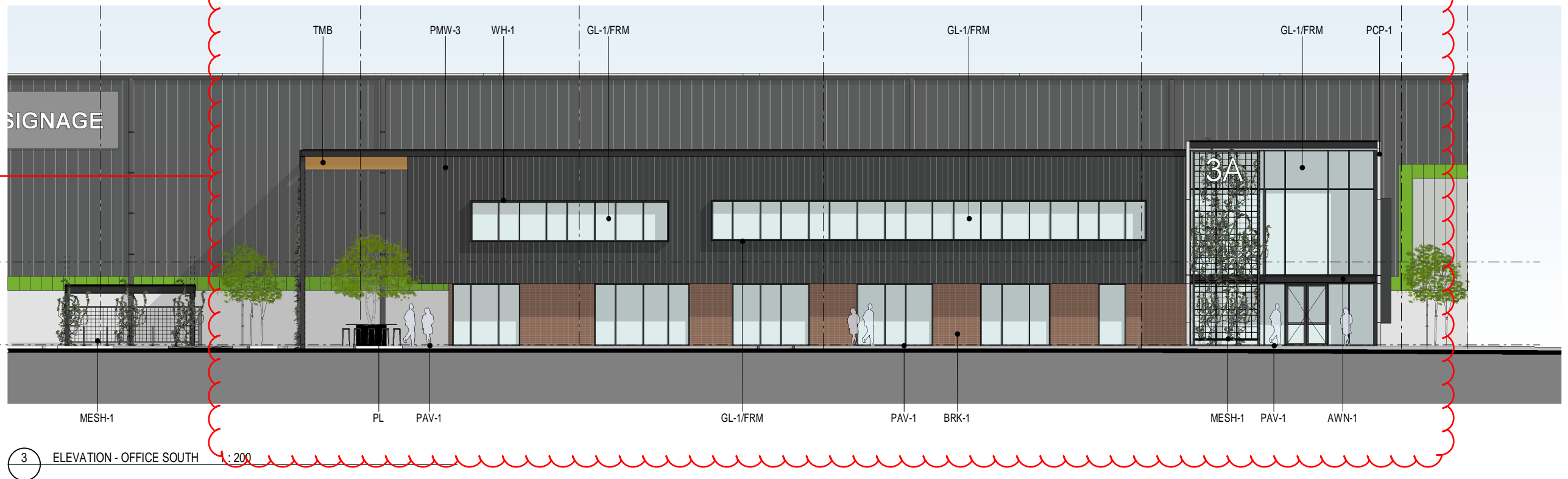
Office facade treatment redesigned



1 ELEVATION - OFFICE EAST 1 : 200



2 ELEVATION - OFFICE WEST 1 : 200



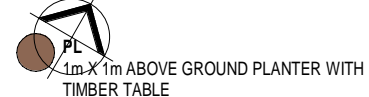
3 ELEVATION - OFFICE SOUTH 1 : 200

Office facade treatment redesigned

Finishes updated to reflect revised office facade treatment

INDICATIVE EXTERNAL FINISHES LEGEND

- BRK-1** BRICKWORK TO EQUAL BOWRAL 300 GERTRUDIS BROWN 300 X 110 X 50mm. STACKED BOND WITH GREY MORTAR JOINTS
- AWN-1** STEEL AWNING. PAINT FINISH TO MATCH COLORBOND MONUMENT
- GL-1** CLEAR GLAZING - LIGHT GREY TINT OR SIMILAR
- MDR-1** METAL DECK ROOFING COLORBOND - SURFMIST
- MRS** METAL ROLLER SHUTTER PREFINISHED IN SHALE GREY
- MESH-1** STAINLESS STEEL MESH IN METAL FRAME
- PCP-1** PRECAST CONCRETE PANEL WITH "NAWKAW PERMATINT PAINT FINISH"
- PCP-2** PRECAST CONCRETE DADO PANEL PAINT FINISH
- PMW-1** PREFINISHED METAL WALL SHEET CLADDING COLORBOND - MONUMENT FINISH (OR SIMILAR)
- SC** STAINLESS STEEL CABLE
- PMW-2** PREFINISHED METAL WALL SHEET CLADDING COLORBOND - GOODMAN GREEN FINISH
- PMW-3** PREFINISHED STANDING SEAM PROFILE METAL CLADDING EQUAL TO FILDERS PROMINENCE FINESSE IN COLOURBOND MONUMENT FINISH
- PMW-4** PREFINISHED METAL WALL SHEET CLADDING COLOURBOND - SHALE GREY
- TRS-1** TRANSLUCENT ROOF SHEET. OPAL COLOUR
- WH-1** STEEL WINDOW HOOD. COLORBOND MONUMENT FINISH (OR SIMILAR)
- FRM** PREFINISHED ALUMINIUM WINDOW FRAME POWDER COATING IN BLACK
- DP-1** DOWNPIPE COLOUR TO MATCH BACKGROUND CLADDING COLOUR
- PAV-1** PAVER, GREY BRICK, HERRINGBONE PATTERN
- TMB** TIMBER LOOK PANELS, ALUMINIUM CLIK ON PANELS, SCULPTFORM
- MB** WELDED SOLID METAL BAR BALUSTRADE. PAINT FINISH



Oakdale West

Kemps Creek, NSW

Proposed Industrial Facility - Lot 3A

Development Application - Modification 1

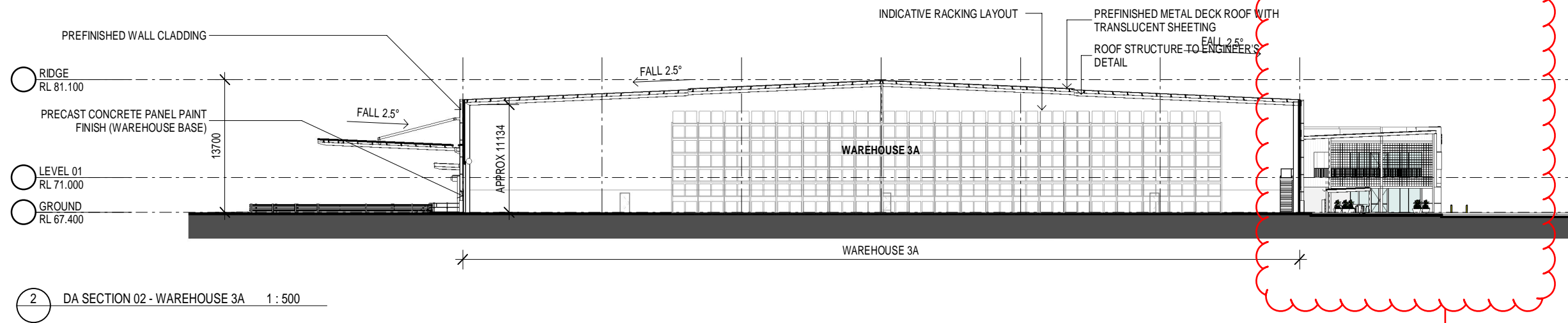
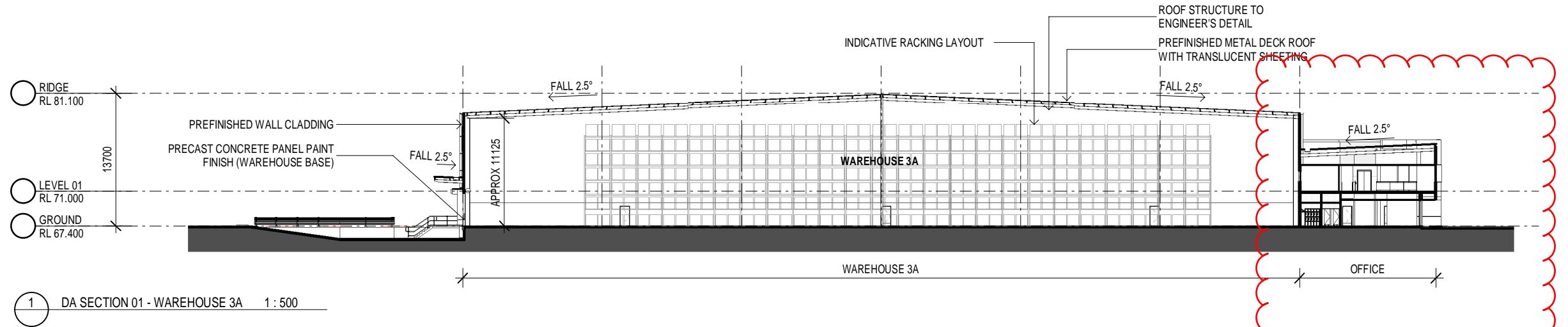
Office Elevations

1:100@A1
1:200@A3

15 JUNE 2021

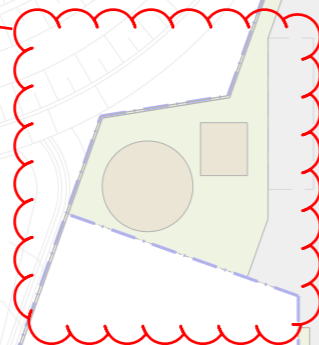
OAK 3A DA36 (B)

Job No 21116

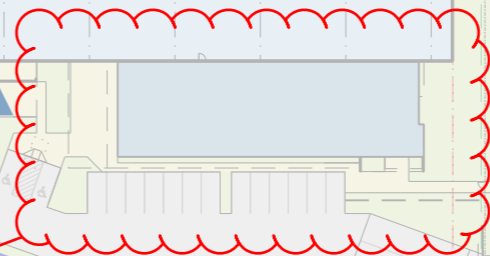


Office facade treatment redesigned

Fire services layout revised



Office outline adjusted to reflect revised facade treatment



Lot 3B

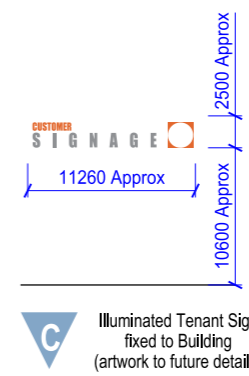
PENRITH CITY COUNCIL

COUNCIL DOES NOT ATTEST TO THE ACCURACY OF DETAILS IN PLANS

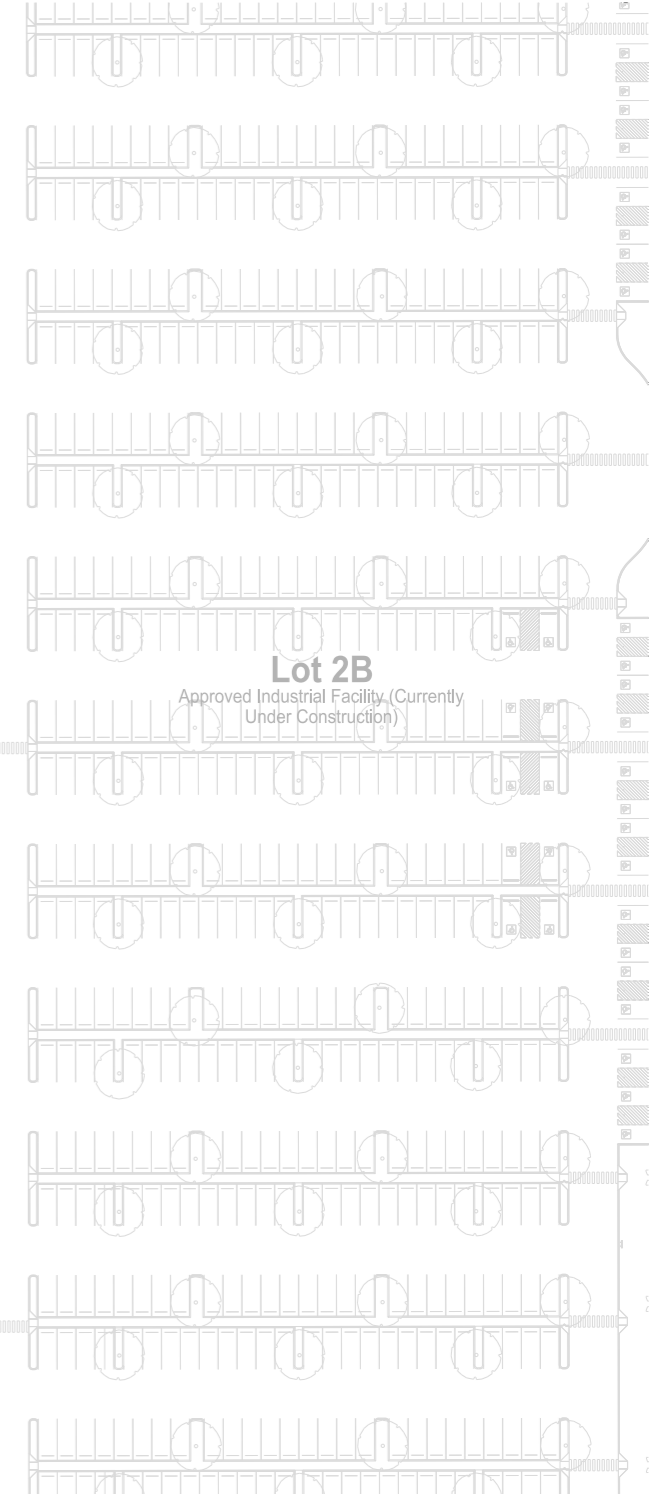
This plan / document relates to Development Consent: **DA20/0843.02**

Subject to the conditions outlined in the consent

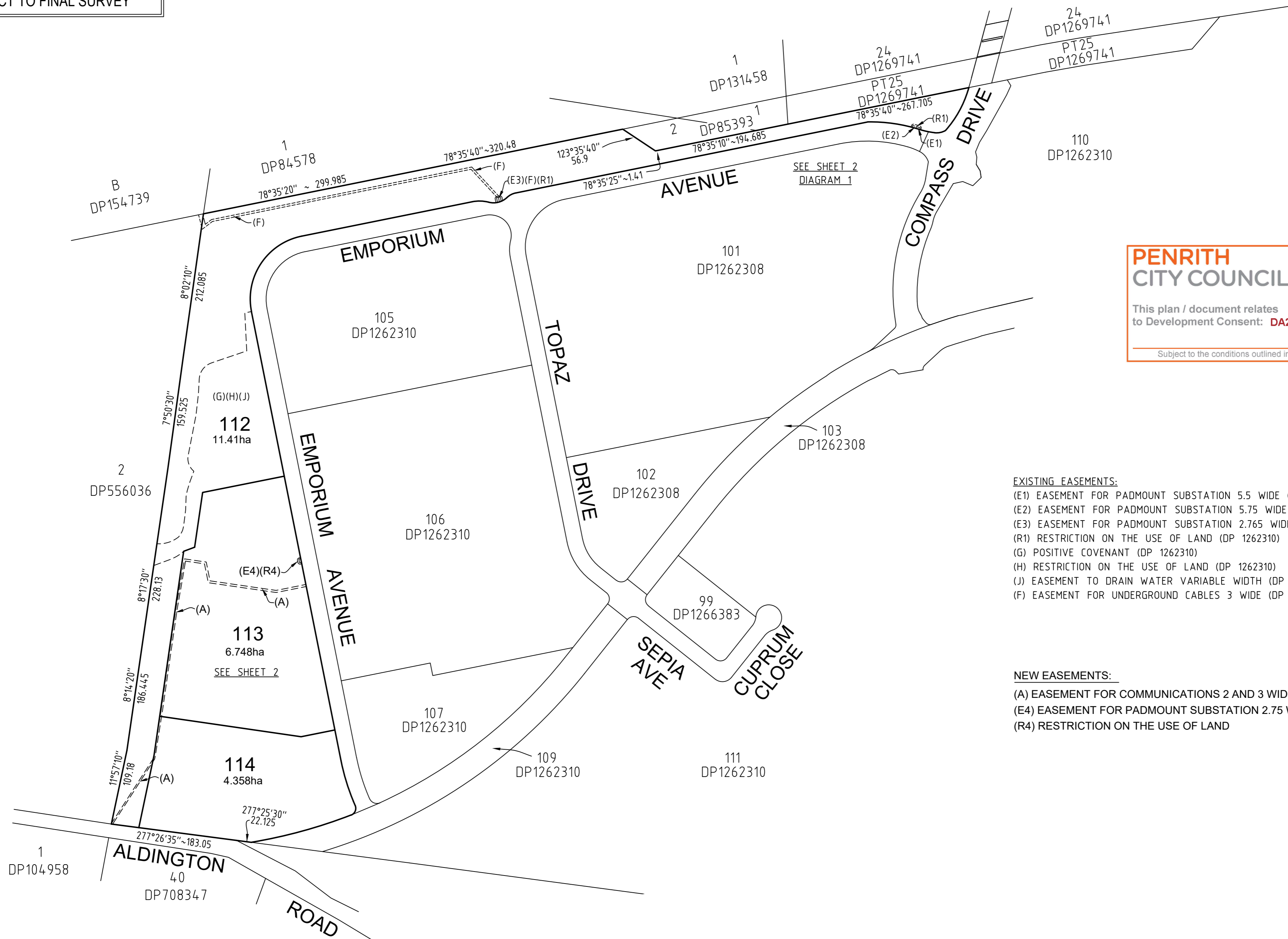
Signage Legend	
	Customer Signage
	Wayfinding - Truck
	Wayfinding - Car
	Goodman Light Box (Type 1) on Warehouse



NOTE: Not To Scale



THIS IS A DRAFT PLAN ONLY AND IS SUBJECT TO FINAL SURVEY



PENRITH CITY COUNCIL

COUNCIL DOES NOT ATTEST TO THE ACCURACY OF DETAILS IN PLANS

This plan / document relates to Development Consent: **DA20/0843.02**

Subject to the conditions outlined in the consent

EXISTING EASEMENTS:

- (E1) EASEMENT FOR PADMOUNT SUBSTATION 5.5 WIDE (DP 1262310)
- (E2) EASEMENT FOR PADMOUNT SUBSTATION 5.75 WIDE (DP 1262310)
- (E3) EASEMENT FOR PADMOUNT SUBSTATION 2.765 WIDE (DP 1262310)
- (R1) RESTRICTION ON THE USE OF LAND (DP 1262310)
- (G) POSITIVE COVENANT (DP 1262310)
- (H) RESTRICTION ON THE USE OF LAND (DP 1262310)
- (J) EASEMENT TO DRAIN WATER VARIABLE WIDTH (DP 1262310)
- (F) EASEMENT FOR UNDERGROUND CABLES 3 WIDE (DP 1262310)

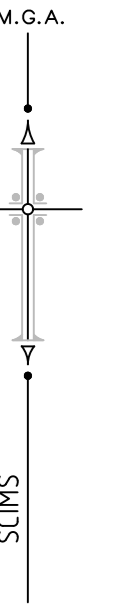
NEW EASEMENTS:

- (A) EASEMENT FOR COMMUNICATIONS 2 AND 3 WIDE
- (E4) EASEMENT FOR PADMOUNT SUBSTATION 2.75 WIDE
- (R4) RESTRICTION ON THE USE OF LAND

<p>SURVEYOR Name: SCOTT PETER LINDSAY LORD Date of Survey: DRAFT ONLY Surveyor's Reference: 50034 040DP</p>	<p>PLAN OF SUBDIVISION OF LOT 108 IN DP1262310</p>	<p>LGA: PENRITH Locality : KEMPS CREEK Reduction Ratio 1: 4000 Lengths are in metres.</p>	<p>Registered</p>	<p>DP DRAFT ISSUE FOR REVIEW : 17-06-2021</p>
---	--	---	-------------------	---

THIS IS A DRAFT PLAN ONLY AND IS SUBJECT TO FINAL SURVEY

SEE DIAGRAM 1 FOR CONTINUATION



EXISTING EASEMENTS:

- (E1) EASEMENT FOR PADMOUNT SUBSTATION 5.5 WIDE (DP 1262310)
- (E2) EASEMENT FOR PADMOUNT SUBSTATION 5.75 WIDE (DP 1262310)
- (E3) EASEMENT FOR PADMOUNT SUBSTATION 2.765 WIDE (DP 1262310)
- (R1) RESTRICTION ON THE USE OF LAND (DP 1262310)
- (G) POSITIVE COVENANT
- (H) RESTRICTION ON THE USE OF LAND
- (J) EASEMENT TO DRAIN WATER VARIABLE WIDTH
- (F) EASEMENT FOR UNDERGROUND CABLES 3 WIDE (DP 1262310)

NEW EASEMENTS:

- (A) EASEMENT FOR COMMUNICATIONS 2 AND 3 WIDE
- (E4) EASEMENT FOR PADMOUNT SUBSTATION 2.75 WIDE
- (R4) RESTRICTION ON THE USE OF LAND

SCHEDULE OF SHORT & CURVED LINES

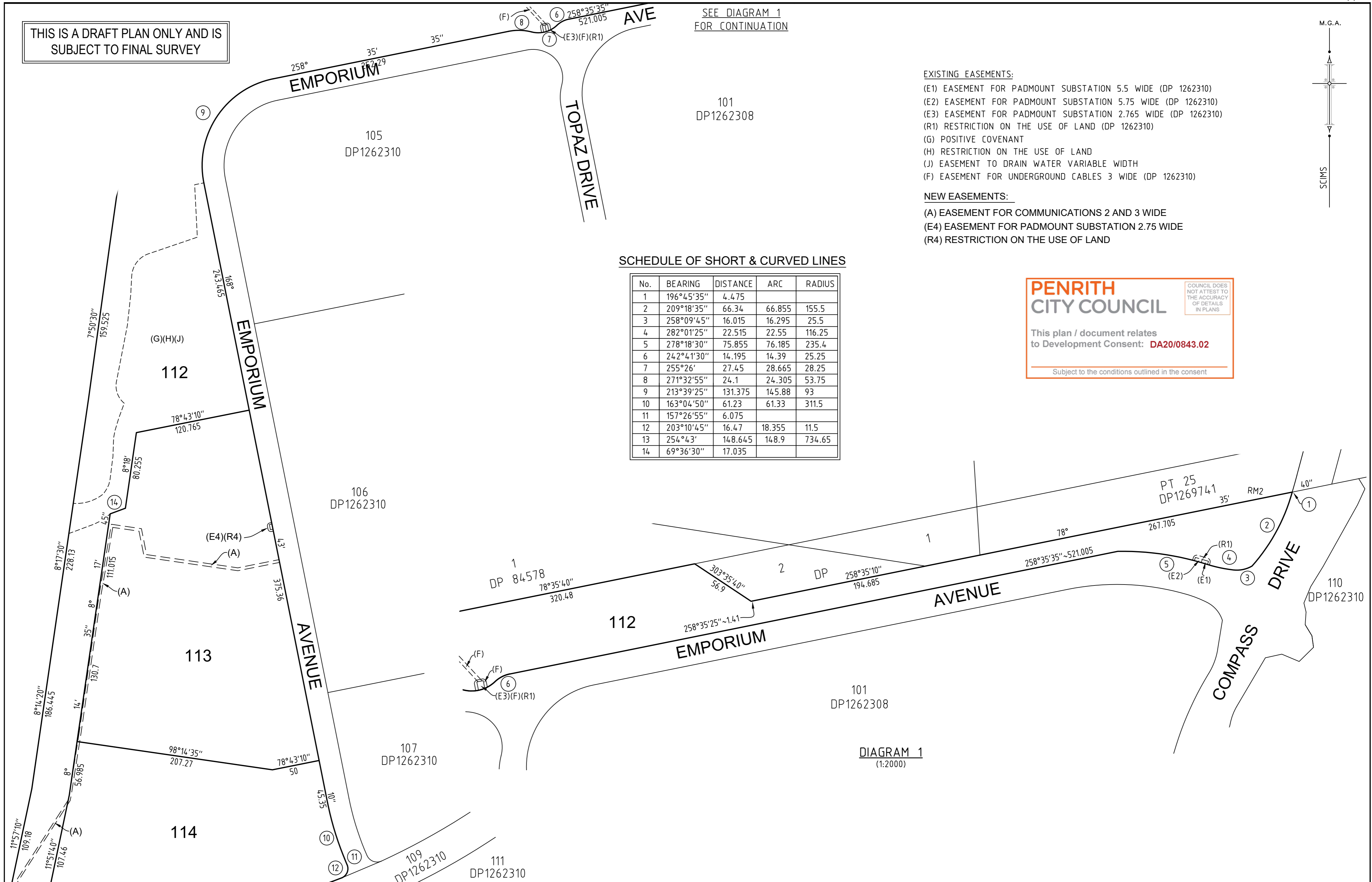
No.	BEARING	DISTANCE	ARC	RADIUS
1	196°45'35"	4.475		
2	209°18'35"	66.34	66.855	155.5
3	258°09'45"	16.015	16.295	25.5
4	282°01'25"	22.515	22.55	116.25
5	278°18'30"	75.855	76.185	235.4
6	242°41'30"	14.195	14.39	25.25
7	255°26'	27.45	28.665	28.25
8	271°32'55"	24.1	24.305	53.75
9	213°39'25"	131.375	145.88	93
10	163°04'50"	61.23	61.33	311.5
11	157°26'55"	6.075		
12	203°10'45"	16.47	18.355	11.5
13	254°43'	148.645	148.9	734.65
14	69°36'30"	17.035		

PENRITH CITY COUNCIL

COUNCIL DOES NOT ATTEST TO THE ACCURACY OF DETAILS IN PLANS

This plan / document relates to Development Consent: **DA20/0843.02**

Subject to the conditions outlined in the consent



SURVEYOR Name: SCOTT PETER LINDSAY LORD Date of Survey: DRAFT ONLY Surveyor's Reference: 50034 040DP	PLAN OF SUBDIVISION OF LOT 108 IN DP1262310	LGA: PENRITH Locality: KEMPS CREEK Reduction Ratio 1: 2500 Lengths are in metres.	Registered DP DRAFT ISSUE FOR REVIEW : 17-06-2021
---	---	--	--