

CONSTRUCTION CERTIFICATE

Approved Plans & Specifications relating to:

Date Approved: 19 October 2023

Certificate No.: CC-23193

BLACKETT MAGUIRE + GOLDSMITH PTY LTD



Qanstruct - OWE LOT 3C1 & 3C2

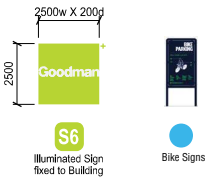
18 Emporium Avenue,
Kemps Creek

Issue C: 13.10.23

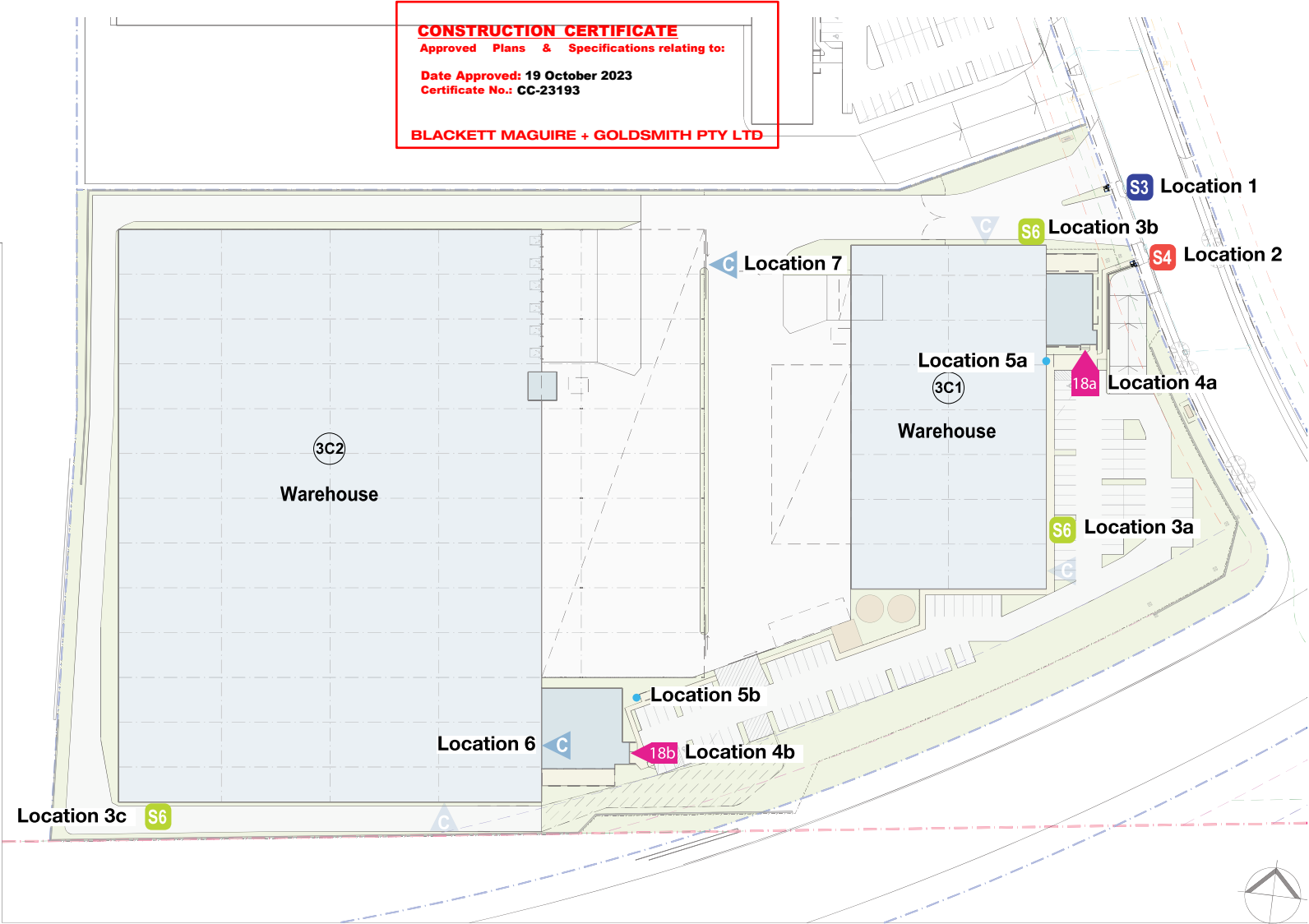
SITE PLAN



CONSTRUCTION CERTIFICATE
Approved Plans & Specifications relating to:
Date Approved: 19 October 2023
Certificate No.: CC-23193
BLACKETT MAGUIRE + GOLDSMITH PTY LTD



NOTE:
Signage Images
Not To Scale



Site Contact

Michael Trotnar

Contact Number

0409 999 447

Contact email

-

Installation Type

SITE PLAN ONLY



56 Elizabeth St, Wetherill Park, NSW 2164
P: 02 9821 7600 | F: 02 9821 7666
E: info@insg.com.au

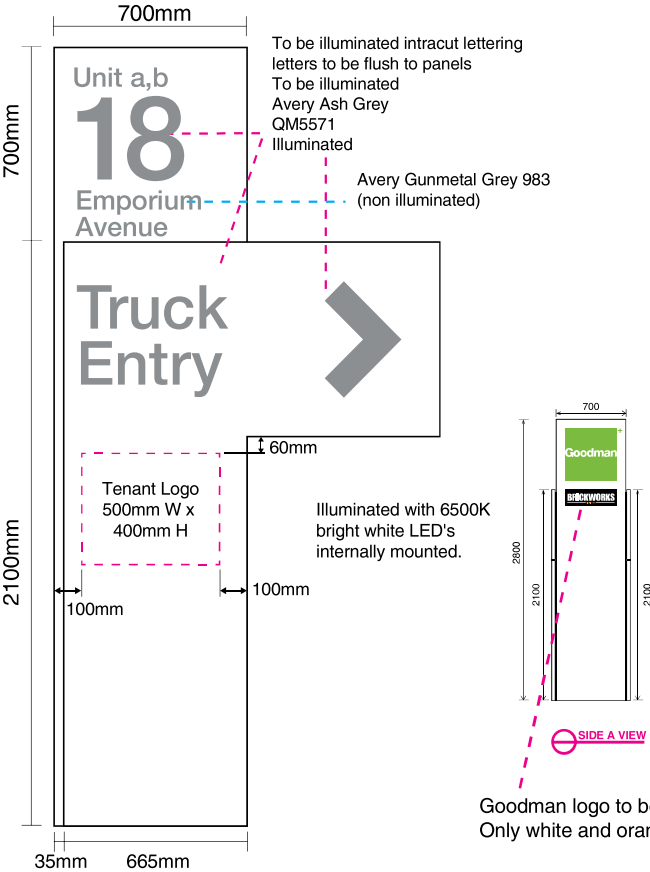
www.wizardry.com.au

PAGE: 2/35

THE ABOVE LAYOUT IS FOR YOUR APPROVAL. PLEASE ENSURE YOU CHECK THAT ALL SIZES, CONFIGURATION, SPELLING, LOGO'S & COLOUR'S (WHERE INDICATED) ARE CORRECT.

COPYRIGHT © 2020 Wizardry imaging and signs, ALL RIGHTS RESERVED.

S3 - Double sided totem - Illuminated



CONSTRUCTION CERTIFICATE

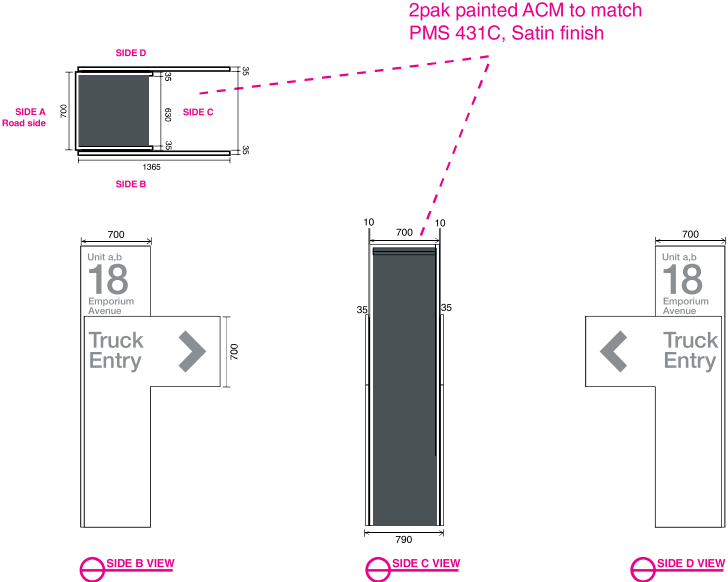
Approved Plans & Specifications relating to:

Date Approved: 19 October 2023

Certificate No.: CC-23193

SIGN LOCATION: REFER TO REFERENCE IMAGE ON NEXT PAGE

BLACKETT MAGUIRE + GOLDSMITH PTY LTD



Goodman logo to be illuminated
Only white and orange to be illuminated

1x S3 Totem
1400 x 2800mm
(Double sided)
Manufactured and finished as per previous signs produced by Wizardry, Installed on new concrete footing
Includes illuminated text and arrows

- Avery Yellow Green QM5562 (Illuminated)
- Avery Ash Grey QM5571 (Illuminated)
- Avery Gunmetal Grey 983
- 2Pak painted PMS 431C

SIGN ID / REFERENCE: S3 Totem	
ISSUE:	C
DATE:	13.10.23
SETUP:	CW
PM:	DY
JOB NO:	8937
SITE 18 Emporium Avenue, Kemps Creek	
CODE -	
TYPE -	
ILLUMINATION Yes	
FORMAT Double sided	
QUANTITY As Shown	
SIZE As Shown	
COLOUR <div></div> PMS 431C PMS 369C	
MATERIALS Internal frame, ACM, Vinyl,	
ACTION Install new finger totem on concrete footing	
FIXING METHODS Via concrete footing	
<div></div> <div>56 Elizabeth St, Wetherill Park. NSW 2164 P: 02 9821 7600 F: 02 9821 7666 E: info@insg.com.au www.wizardry.com.au</div>	

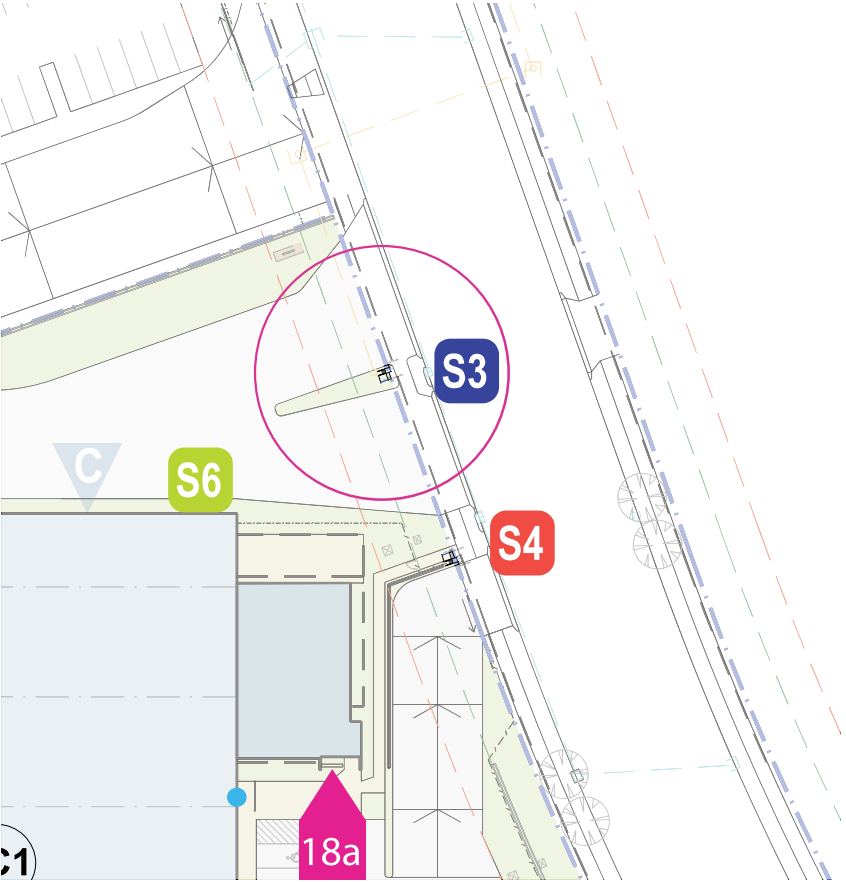
● Location 1

Site Contact	Contact Number	Contact email	Installation Type
Michael Trotnar	0409 999 447	-	Install

THE ABOVE LAYOUT IS FOR YOUR APPROVAL. PLEASE ENSURE YOU CHECK THAT ALL SIZES, CONFIGURATION, SPELLING, LOGO'S & COLOUR'S (WHERE INDICATED) ARE CORRECT.

S3 - Double sided totem - Illuminated

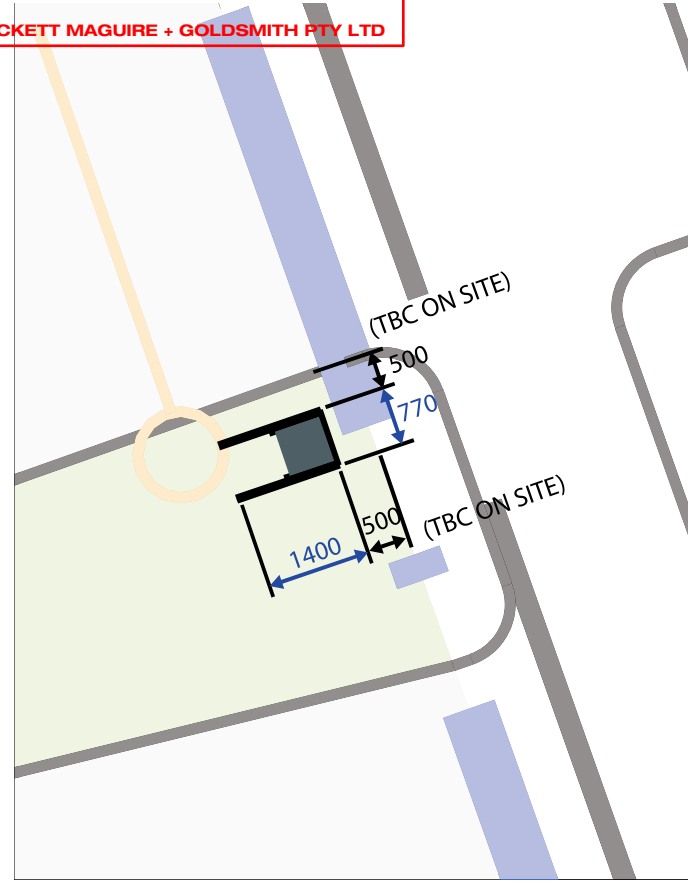
FINISHED LANDSCAPE HEIGHT TBC BY BUILDER



CONSTRUCTION CERTIFICATE
Approved Plans & Specifications relating to:

Date Approved: 19 October 2023
Certificate No.: CC-23193

BLACKETT MAGUIRE + GOLDSMITH PTY LTD



SIGN LOCATION: 500mm AWAY FROM BOUNDARY LINE & EDGE OF DRIVEWAY

SIGN ID / REFERENCE:
S3 Totem
Location set-out

ISSUE: C
DATE: 13.10.23
SETUP: CW
PM: DY
JOB NO: 8937

SITE
18 Emporium Avenue,
Kemps Creek

CODE
-


TYPE
-

ILLUMINATION
Yes

FORMAT
Double sided

QUANTITY
As Shown

SIZE
As Shown

COLOUR

PMS 431C PMS 369C

MATERIALS
Internal frame, ACM, Vinyl,

ACTION
Install new finger totem on
concrete footing

FIXING METHODS
Via concrete footing

Wizardry
IMAGING & SIGNS

56 Elizabeth St, Wetherill Park, NSW 2164
P: 02 9821 7600 | F: 02 9821 7666
E: info@insg.com.au

www.wizardry.com.au

PAGE: 4/35

● **Location 1**

Site Contact
Michael Trotnar

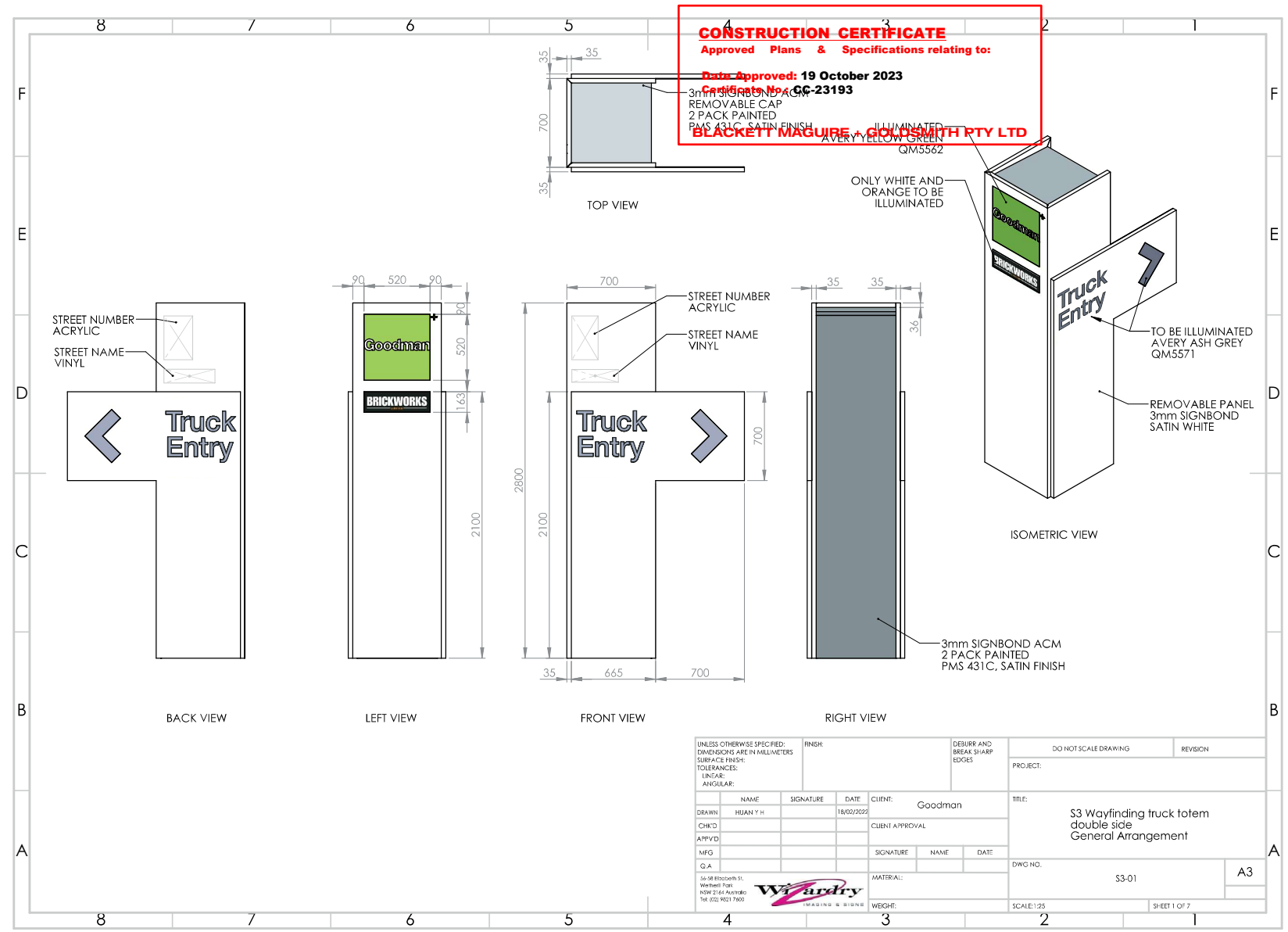
Contact Number
0409 999 447

Contact email
-

Installation Type
Install

THE ABOVE LAYOUT IS FOR YOUR APPROVAL. PLEASE ENSURE YOU CHECK THAT ALL SIZES, CONFIGURATION, SPELLING, LOGO'S & COLOUR'S (WHERE INDICATED) ARE CORRECT.

S3 - Double sided totem - Illuminated



SIGN ID / REFERENCE:

**S3 Totem
Construction**

ISSUE: C
DATE: 13.10.23
SETUP: CW
PM: DY
JOB NO: 8937

SITE
18 Emporium Avenue,
Kemps Creek

CODE
-

TYPE
-

ILLUMINATION
Yes

FORMAT
Double sided

QUANTITY
As Shown

SIZE
As Shown

COLOUR
PMS 431C PMS 369C

MATERIALS
Internal frame, ACM, Vinyl,

ACTION
Install new finger totem on
concrete footing

FIXING METHODS
Via concrete footing



56 Elizabeth St, Wetherill Park, NSW 2164
P: 02 9821 7600 | F: 02 9821 7666
E: info@insg.com.au

www.wizardry.com.au

PAGE: 5/35

Site Contact
Michael Trotnar

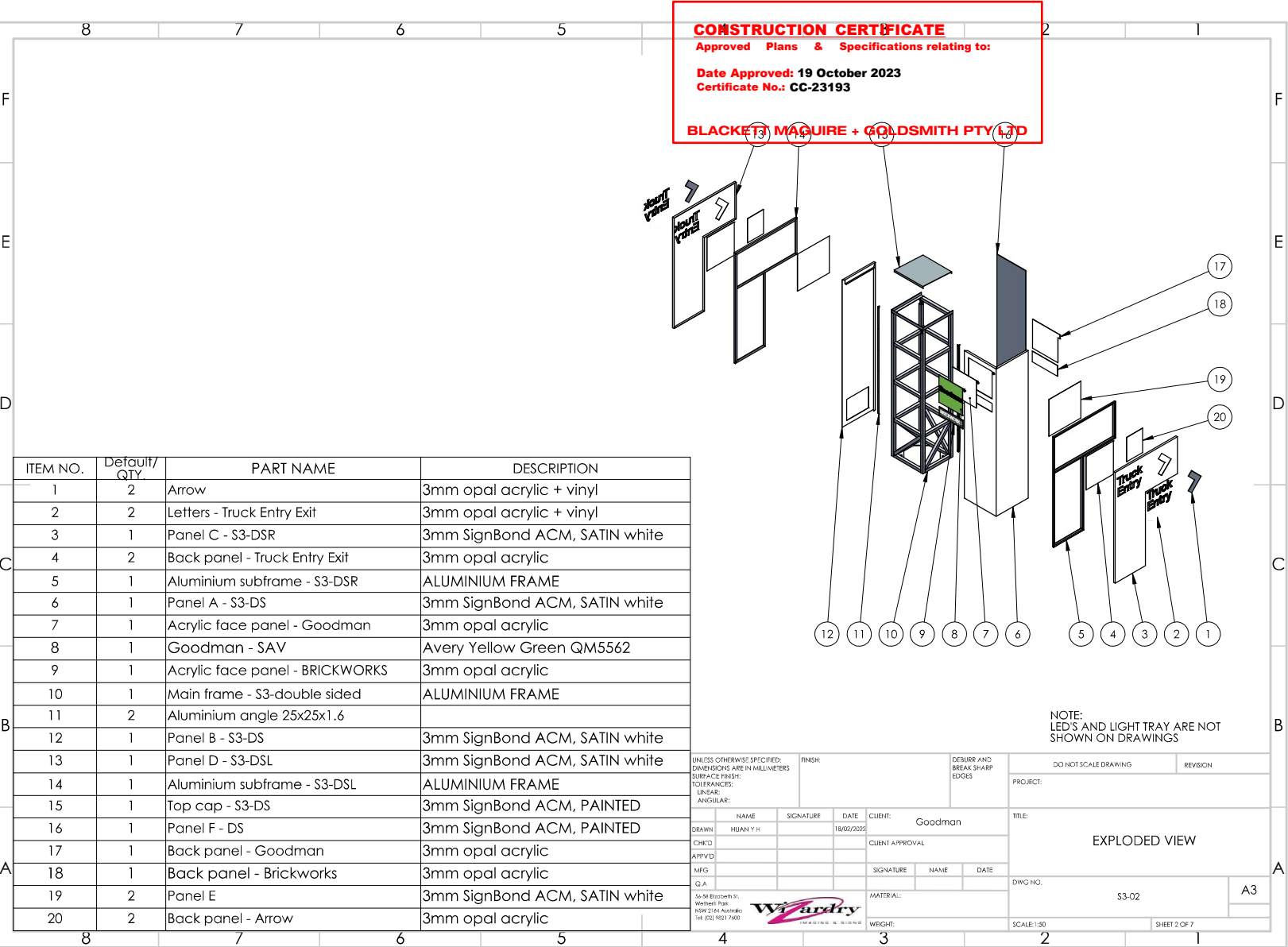
Contact Number
0409 999 447

Contact email
-

Installation Type
Install

THE ABOVE LAYOUT IS FOR YOUR APPROVAL. PLEASE ENSURE YOU CHECK THAT ALL SIZES, CONFIGURATION, SPELLING, LOGO'S & COLOUR'S (WHERE INDICATED) ARE CORRECT.

S3 - Double sided totem - Illuminated



SIGN ID / REFERENCE:
S3 Totem
Construction

ISSUE: C
DATE: 13.10.23
SETUP: CW
PM: DY
JOB NO: 8937

SITE
18 Emporium Avenue,
Kemps Creek

CODE
-

TYPE
-

ILLUMINATION
Yes

FORMAT
Double sided

QUANTITY
As Shown

SIZE
As Shown

COLOUR

PMS 431C PMS 369C

MATERIALS
Internal frame, ACM, Vinyl,

ACTION
Install new finger totem on
concrete footing

FIXING METHODS
Via concrete footing



56 Elizabeth St, Wetherill Park, NSW 2164
P: 02 9821 7600 | F: 02 9821 7666
E: info@insg.com.au

www.wizardry.com.au

PAGE: 6/35

Site Contact

Michael Trotnar

Contact Number

0409 999 447

Contact email

-

Installation Type

Install

THE ABOVE LAYOUT IS FOR YOUR APPROVAL. PLEASE ENSURE YOU CHECK THAT ALL SIZES, CONFIGURATION, SPELLING, LOGO'S & COLOUR'S (WHERE INDICATED) ARE CORRECT.

S3 - Double sided totem - Illuminated

CONSTRUCTION CERTIFICATE
Approved Plans & Specifications relating to:
ALUMINIUM ANGLE
DATE: 18/02/2022
Date Approved: 19 October 2023
Certificate No: CC-23193
PACKER NEEDED
BLACKETT MAGUIRE + GOLDSMITH PTY LTD

DETAIL E
SCALE 1 : 5

DETAIL C
SCALE 1 : 5

SECTION A-A

DETAIL B
SCALE 1 : 5

SECTION D-D

LEFT VIEW

FRONT VIEW

SECTION F-F

ISOMETRIC VIEW

DETAIL G
SCALE 1 : 5

DETAIL H
SCALE 1 : 5

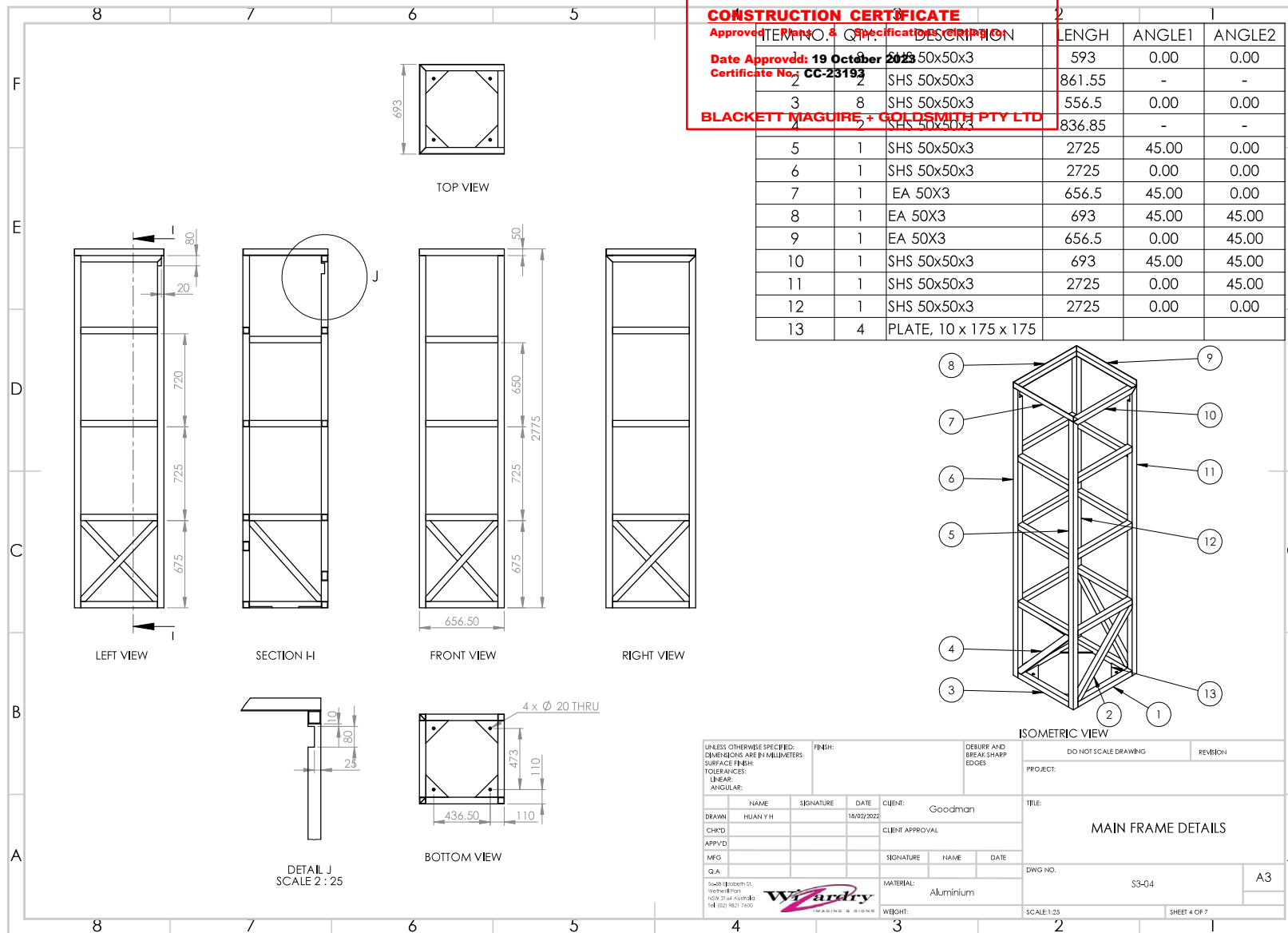
BOTTOM VIEW

SECTION VIEWS

UNLESS OTHERWISE SPECIFIED:		FINISH:		DEBURR AND BREAK SHARP EDGES		DO NOT SCALE DRAWING		REVISION	
DIMENSIONS ARE IN MILLIMETERS						PROJECT:			
SURFACE FINISH:									
TOLERANCES:									
LINEAR:									
ANGULAR:									
NAME	SIGNATURE	DATE	CLIENT	Goodman		TITLE:			
18/02/2022			CLIENT APPROVAL						
NAME	SIGNATURE	DATE			DWG NO.				
						S3-03		A3	
						SCALE: 1:25		SHEET 3 OF 7	

NOTE:
LED'S AND LIGHT TRAY ARE NOT SHOWN ON DRAWINGS

S3 - Double sided totem - Illuminated



SIGN ID / REFERENCE:

S3 Totem Construction

ISSUE: C
DATE: 13.10.23
SETUP: CW
PM: DY
JOB NO: 8937

SITE
18 Emporium Avenue,
Kemps Creek

CODE

TYPE

ILLUMINATION
Yes

FORMAT
Double sided

QUANTITY
As Shown

SIZE
As Shown

COLOUR

PMS 431C PMS 369C

MATERIALS
Internal frame, ACM, Vinyl,

ACTION
Install new finger totem on
concrete footing

FIXING METHODS
Via concrete footing

Wizardry
IMAGING & SIGNS

56 Elizabeth St, Wetherill Park, NSW 2164
P: 02 9821 7600 | F: 02 9821 7666
E: info@insg.com.au

www.wizardry.com.au

PAGE: 8/35

Site Contact

Michael Trotnar

Contact Number

0409 999 447

Contact email

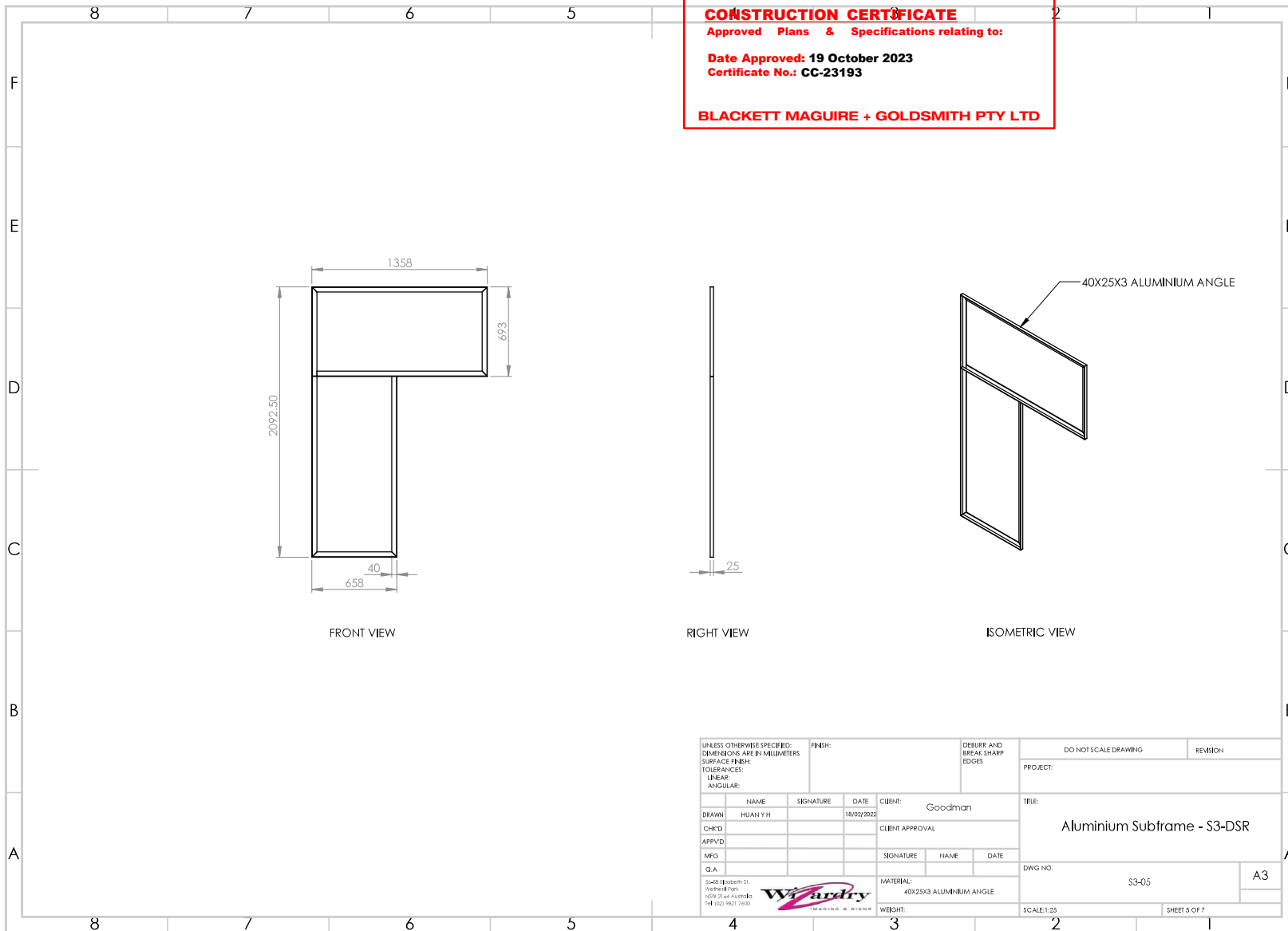
-

Installation Type

Install

THE ABOVE LAYOUT IS FOR YOUR APPROVAL. PLEASE ENSURE YOU CHECK THAT ALL SIZES, CONFIGURATION, SPELLING, LOGO'S & COLOUR'S (WHERE INDICATED) ARE CORRECT.

S3 - Double sided totem - Illuminated



SIGN ID / REFERENCE:

S3 Totem Construction

ISSUE: C
DATE: 13.10.23
SETUP: CW
PM: DY
JOB NO: 8937

SITE
18 Emporium Avenue,
Kemps Creek

CODE
-

TYPE
-

ILLUMINATION
Yes

FORMAT
Double sided

QUANTITY
As Shown

SIZE
As Shown

COLOUR

PMS 431C PMS 369C

MATERIALS
Internal frame, ACM, Vinyl,

ACTION
Install new finger totem on
concrete footing

FIXING METHODS
Via concrete footing

Wizdry
IMAGING & SIGNS

56 Elizabeth St, Wetherill Park, NSW 2164
P: 02 9821 7600 | F: 02 9821 7666
E: info@insg.com.au

www.wizardry.com.au

PAGE: 9/35

Site Contact

Michael Trotnar

Contact Number

0409 999 447

Contact email

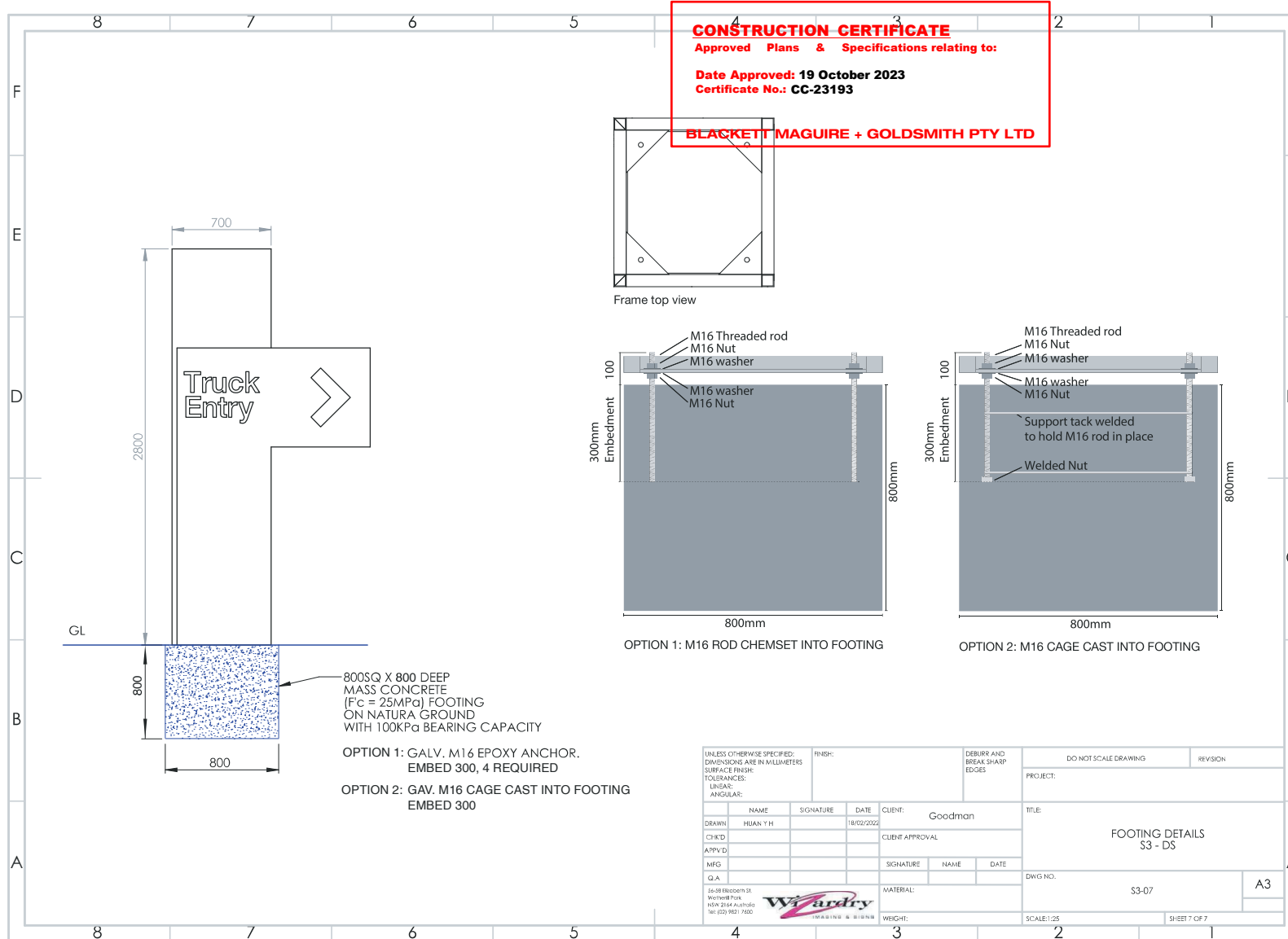
-

Installation Type

Install

THE ABOVE LAYOUT IS FOR YOUR APPROVAL. PLEASE ENSURE YOU CHECK THAT ALL SIZES, CONFIGURATION, SPELLING, LOGO'S & COLOUR'S (WHERE INDICATED) ARE CORRECT.

S3 - Double sided totem - Illuminated



SIGN ID / REFERENCE:

S3 Totem Footing

ISSUE:	C
DATE:	13.10.23
SETUP:	CW
PM:	DY
JOB NO:	8937

SITE
18 Emporium Avenue,
Kemps Creek

CODE	
-	

TYPE	
-	

ILLUMINATION
Yes

FORMAT
Double sided

QUANTITY
As Shown

SIZE
As Shown

COLOUR

PMS 431C PMS 369C

MATERIALS

Internal frame, ACM, Vinyl,

ACTION

Install new finger totem on concrete footing

FIXING METHODS

Via concrete footing



Wizardry
IMAGING & SIGNS

56 Elizabeth St, Wetherill Park. NSW 2164
P: 02 9821 7600 | F: 02 9821 7666
E: info@insq.com.au

www.wizardry.com.au

PAGE: 10/35

Site Contact

Michael Trotnar

Contact Number

0409 999 447

Contact email

—

Installation Type

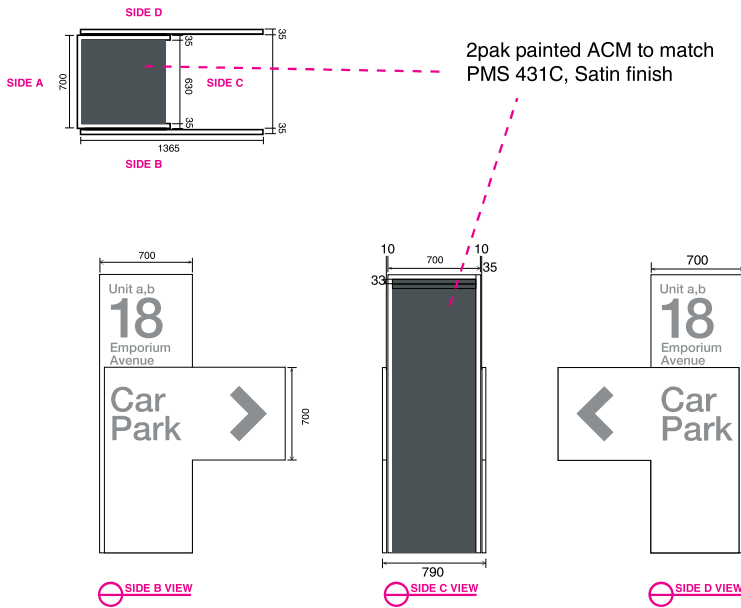
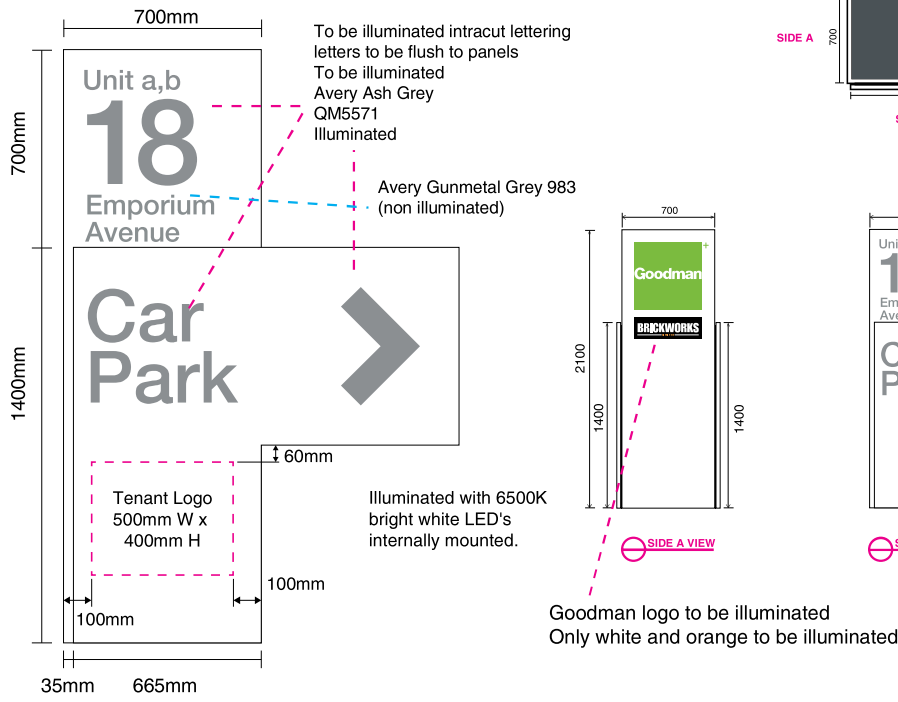
Install

THE ABOVE LAYOUT IS FOR YOUR APPROVAL. PLEASE ENSURE YOU CHECK THAT ALL SIZES, CONFIGURATION, SPELLING, LOGO'S & COLOUR'S (WHERE INDICATED) ARE CORRECT.

COPYRIGHT © 2020 Wizardry imaging and signs. ALL RIGHTS RESERVED.


S4 - Double sided totem - Illuminated

CONSTRUCTION CERTIFICATE
Approved Plans & Specifications relating to:
Date Approved: 19 October 2023
Certificate No.: CC-23193
SIGN LOCATION: REFER TO REFERENCE IMAGE ON NEXT PAGE
BLACKETT MAGUIRE + GOLDSMITH PTY LTD



1x S4 Totem
1400 x 2100mm
(Double sided)
Manufactured and finished in general accordance with Goodman Guidelines & directive, Installed on new concrete footing
Includes illuminated text and arrows

- Avery Yellow Green QM5562 (Illuminated)
- Avery Ash Grey QM5571 (Illuminated)
- Avery Gunmetal Grey 983
- 2Pak painted PMS 431C

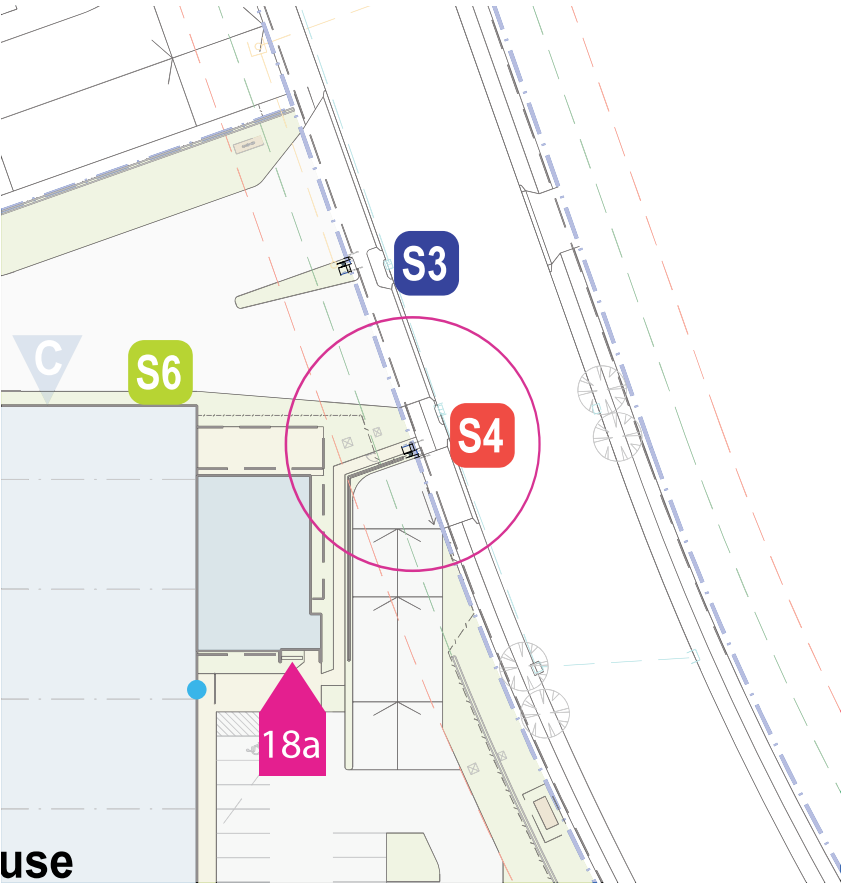
SIGN ID / REFERENCE: S4 Totem	
ISSUE:	C
DATE:	13.10.23
SETUP:	CW
PM:	DY
JOB NO:	8937
SITE 18 Emporium Avenue, Kemps Creek	
CODE -	
TYPE -	
ILLUMINATION Yes	
FORMAT Double sided	
QUANTITY As Shown	
SIZE As Shown	
COLOUR PMS 431C PMS 369C	
MATERIALS Internal frame, ACM, Vinyl,	
ACTION Install new finger totem on concrete footing	
FIXING METHODS Via concrete footing	
<div> 56 Elizabeth St, Wetherill Park, NSW 2164 P: 02 9821 7600 F: 02 9821 7666 E: info@insg.com.au www.wizardry.com.au</div>	

● Location 2

Site Contact Michael Trotnar	Contact Number 0409 999 447	Contact email -	Installation Type Install
---------------------------------	--------------------------------	--------------------	------------------------------

S4 - Double sided totem - Illuminated

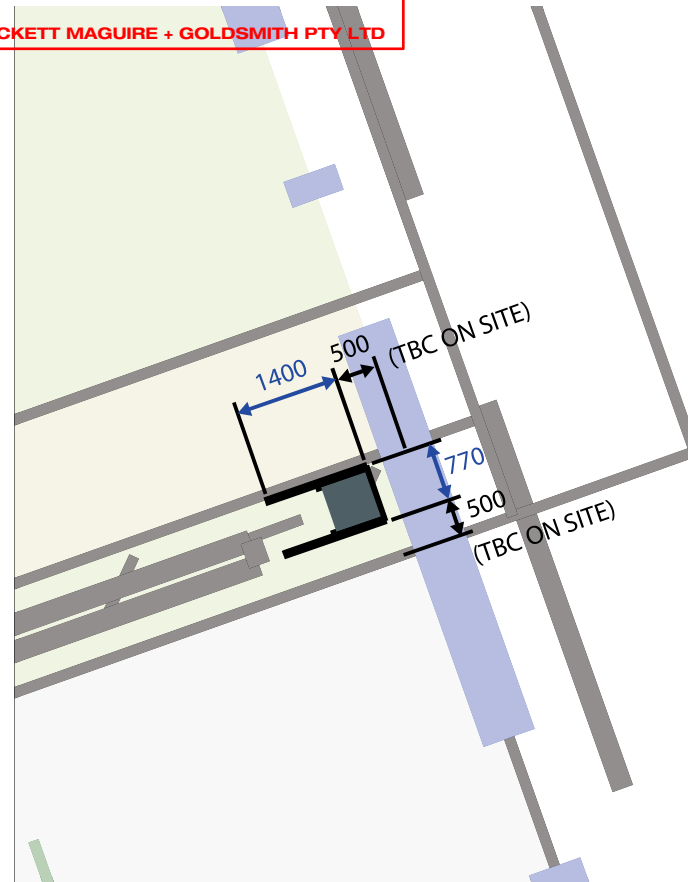
FINISHED LANDSCAPE HEIGHT TBC BY BUILDER



CONSTRUCTION CERTIFICATE
Approved Plans & Specifications relating to:

Date Approved: 19 October 2023
Certificate No.: CC-23193

BLACKETT MAGUIRE + GOLDSMITH PTY LTD



SIGN LOCATION: 500mm AWAY FROM BOUNDARY LINE &
EDGE OF DRIVEWAY

SIGN ID / REFERENCE:
S4 Totem
Location set-out

ISSUE: C
DATE: 13.10.23
SETUP: CW
PM: DY
JOB NO: 8937

SITE
18 Emporium Avenue,
Kemps Creek

CODE
-

TYPE
-

ILLUMINATION
Yes

FORMAT
Double sided

QUANTITY
As Shown

SIZE
As Shown

COLOUR

PMS 431C PMS 369C

MATERIALS
Internal frame, ACM, Vinyl,

ACTION
Install new finger totem on
concrete footing

FIXING METHODS
Via concrete footing

Wizardry
IMAGING & SIGNS

56 Elizabeth St, Wetherill Park, NSW 2164
P: 02 9821 7600 | F: 02 9821 7666
E: info@insg.com.au

www.wizardry.com.au

PAGE: 12/35

● **Location 2**

Site Contact
Michael Trotnar

Contact Number
0409 999 447

Contact email
-

Installation Type
Install

THE ABOVE LAYOUT IS FOR YOUR APPROVAL. PLEASE ENSURE YOU CHECK THAT ALL SIZES, CONFIGURATION, SPELLING, LOGO'S & COLOUR'S (WHERE INDICATED) ARE CORRECT.

S4 - Double sided totem - Illuminated

ITEM NO.	QTY.	PART NAME	DESCRIPTION
1	2	Arrow	3mm opal acrylic + SAV
2	2	Letters - Car Park	3mm opal acrylic + SAV
3	1	Panel C - S4-DSR	3mm SignBond ACM, satin white
4	2	Back panel - Car Park	3mm opal acrylic
5	1	Aluminium subframe - S4-DSR	
6	1	Panel A - S4-DS	3mm SignBond ACM, satin white
7	1	Main frame - S4-double sided	ALUMINIUM FRAME
8	1	Back panel - Goodman	3mm opal acrylic
9	1	Back panel - Brickworks	3mm opal acrylic
10	1	Acrylic face panel - Goodman	3mm opal acrylic
11	1	Goodman - SAV	Avery Yellow Green QM5562
12	1	Acrylic face panel - BRICKWORKS	3mm opal acrylic + vinyl
13	1	Panel D - S4-DSL	3mm SignBond ACM, satin white
14	1	Aluminium subframe - S4-DSL	
15	1	Panel B - S4-DS	3mm SignBond ACM, satin white
16	1	Top cap - S4-DS	3mm SignBond ACM, PAINTED
17	2	Aluminium angle 25x25x1.6	
18	1	Panel F - DS	3mm SignBond ACM, PAINTED
19	2	Panel E	3mm SignBond ACM, satin white
20	2	Back panel - Arrow	3mm opal acrylic

CONSTRUCTION CERTIFICATE
 Approved Plans & Specifications relating to:
 Date Approved: 19 October 2023
 Certificate No.: CC-23193
 BLACKETT MAGUIRE + GOLDSMITH PTY LTD

UNLESS OTHERWISE SPECIFIED:
 DIMENSIONS ARE IN MILLIMETERS
 SURFACE FINISH:
 TOLERANCES:
 LINEAR:
 ANGULAR:

FINISH:
 DEBUR AND BREAK SHARP EDGES
 PROJECT:
 TITLE: EXPLODED VIEW
 DWG NO: S4-02
 SCALE: 1:50
 SHEET 2 OF 7

SIGN ID / REFERENCE:

S4 Totem Construction

ISSUE: C
 DATE: 13.10.23
 SETUP: CW
 PM: DY
 JOB NO: 8937

SITE
 18 Emporium Avenue,
 Kemps Creek

CODE

TYPE

ILLUMINATION
 Yes

FORMAT
 Double sided

QUANTITY
 As Shown

SIZE
 As Shown

COLOUR

PMS 431C PMS 369C

MATERIALS
 Internal frame, ACM, Vinyl,

ACTION
 Install new finger totem on
 concrete footing

FIXING METHODS
 Via concrete footing

Wizardry
 IMAGING & SIGNS

56 Elizabeth St, Wetherill Park, NSW 2164
 P: 02 9821 7600 | F: 02 9821 7666
 E: info@insg.com.au

www.wizardry.com.au

PAGE: 14/35

Site Contact

Michael Trotnar

Contact Number

0409 999 447

Contact email

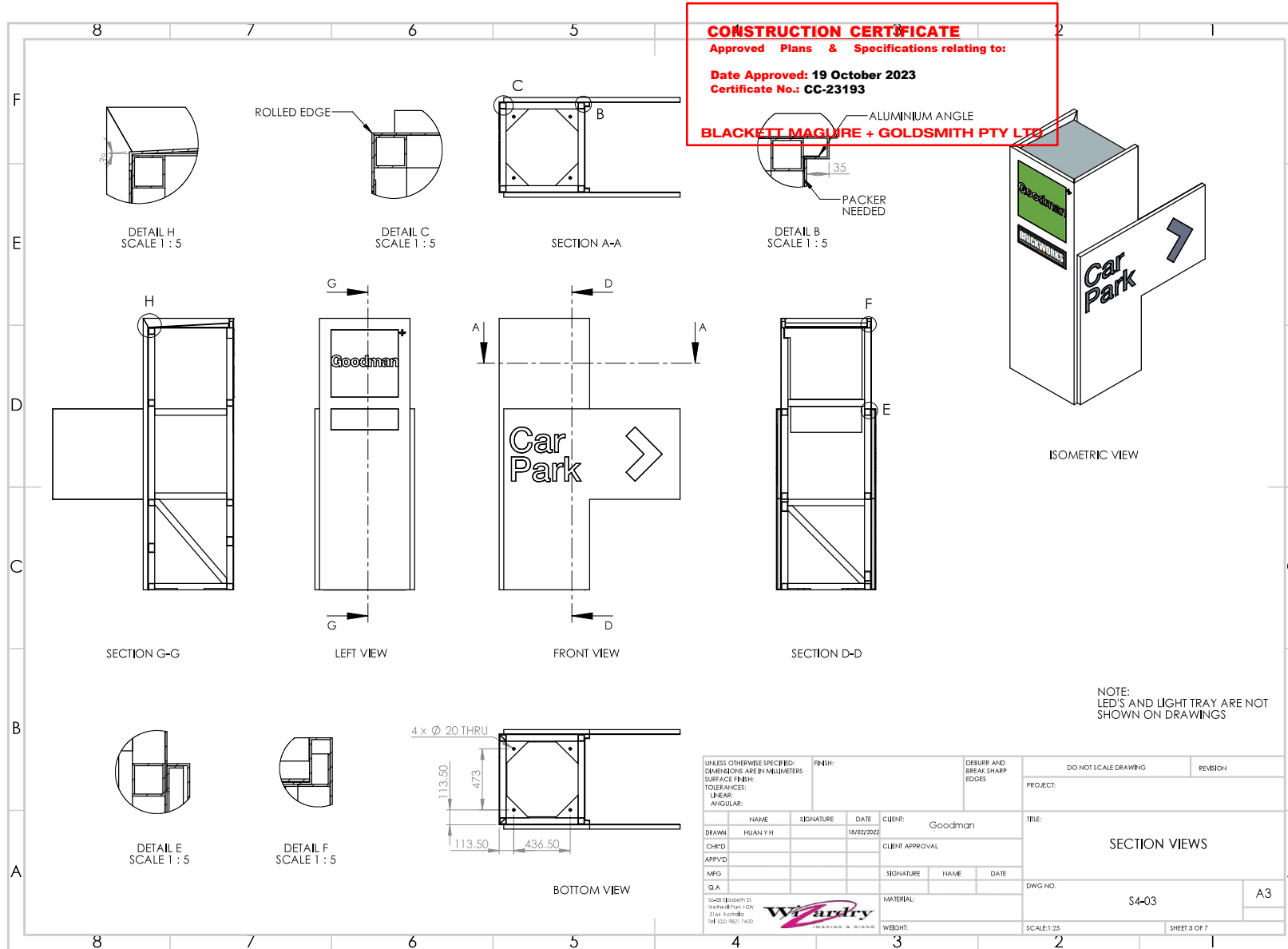
-

Installation Type

Install

THE ABOVE LAYOUT IS FOR YOUR APPROVAL. PLEASE ENSURE YOU CHECK THAT ALL SIZES, CONFIGURATION, SPELLING, LOGO'S & COLOUR'S (WHERE INDICATED) ARE CORRECT.

S4 - Double sided totem - Illuminated



SIGN ID / REFERENCE:

S4 Totem Construction

ISSUE: C
DATE: 13.10.23
SETUP: CW
PM: DY
JOB NO: 8937

SITE
18 Emporium Avenue,
Kemps Creek

CODE

TYPE

ILLUMINATION
Yes

FORMAT
Double sided

QUANTITY
As Shown

SIZE
As Shown

COLOUR

PMS 431C PMS 369C

MATERIALS
Internal frame, ACM, Vinyl,

ACTION
Install new finger totem on
concrete footing

FIXING METHODS
Via concrete footing

Wizardry
IMAGING & SIGNS

56 Elizabeth St, Wetherill Park, NSW 2164
P: 02 9821 7600 | F: 02 9821 7666
E: info@insg.com.au

www.wizardry.com.au

PAGE: 15/35

Site Contact

Michael Trotnar

Contact Number

0409 999 447

Contact email

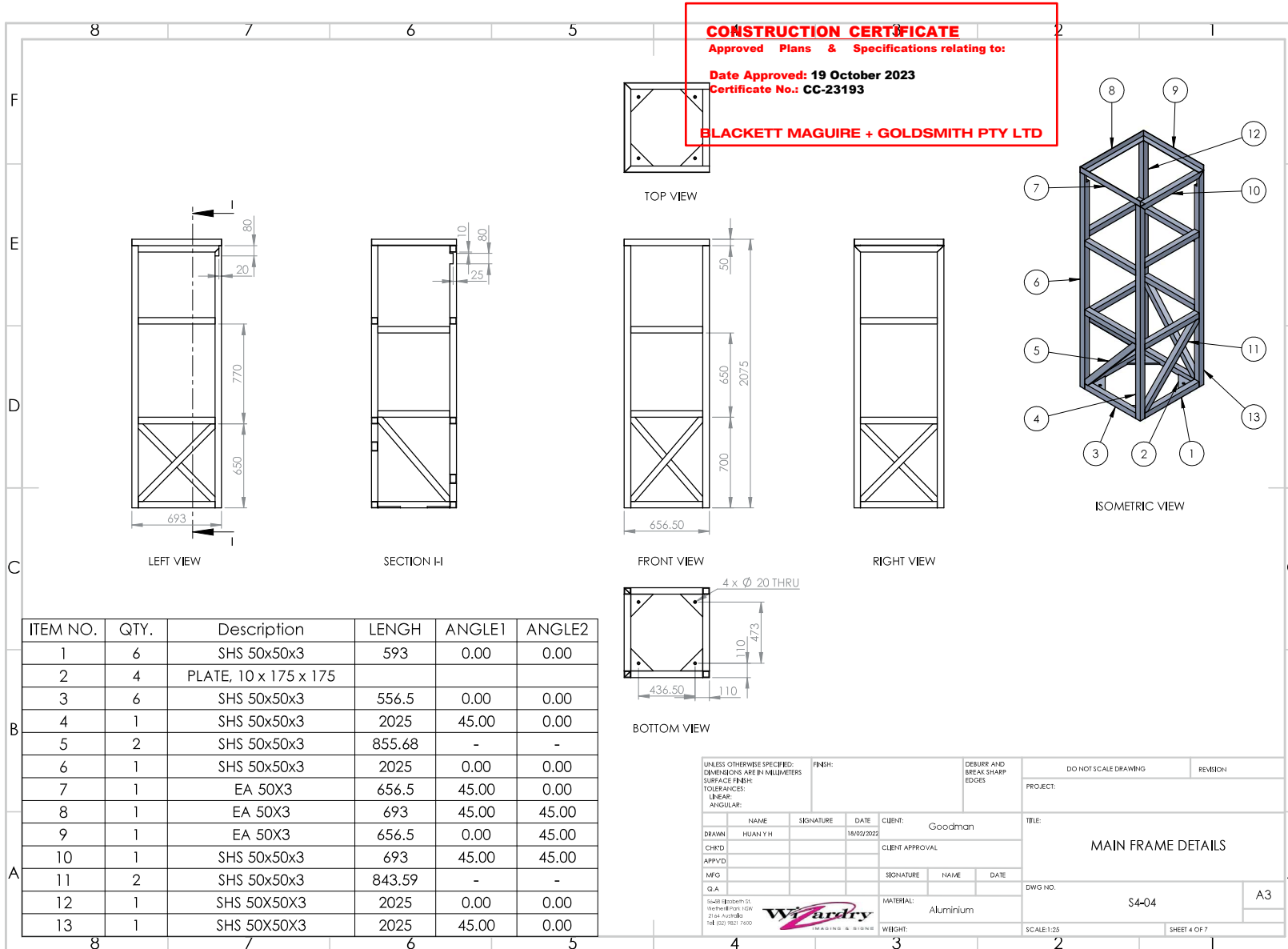
-

Installation Type

Install

THE ABOVE LAYOUT IS FOR YOUR APPROVAL. PLEASE ENSURE YOU CHECK THAT ALL SIZES, CONFIGURATION, SPELLING, LOGO'S & COLOUR'S (WHERE INDICATED) ARE CORRECT.

S4 - Double sided totem - Illuminated



SIGN ID / REFERENCE:

S4 Totem Construction

ISSUE: C
DATE: 13.10.23
SETUP: CW
PM: DY
JOB NO: 8937

SITE
18 Emporium Avenue,
Kemps Creek

CODE

TYPE

ILLUMINATION
Yes

FORMAT
Double sided

QUANTITY
As Shown

SIZE
As Shown

COLOUR

PMS 431C PMS 369C

MATERIALS
Internal frame, ACM, Vinyl,

ACTION
Install new finger totem on
concrete footing

FIXING METHODS
Via concrete footing

Wizadry
IMAGING & SIGNS

56 Elizabeth St, Wetherill Park, NSW 2164
P: 02 9821 7600 | F: 02 9821 7666
E: info@insg.com.au

www.wizardry.com.au

PAGE: 16/35

Site Contact

Michael Trotnar

Contact Number

0409 999 447

Contact email

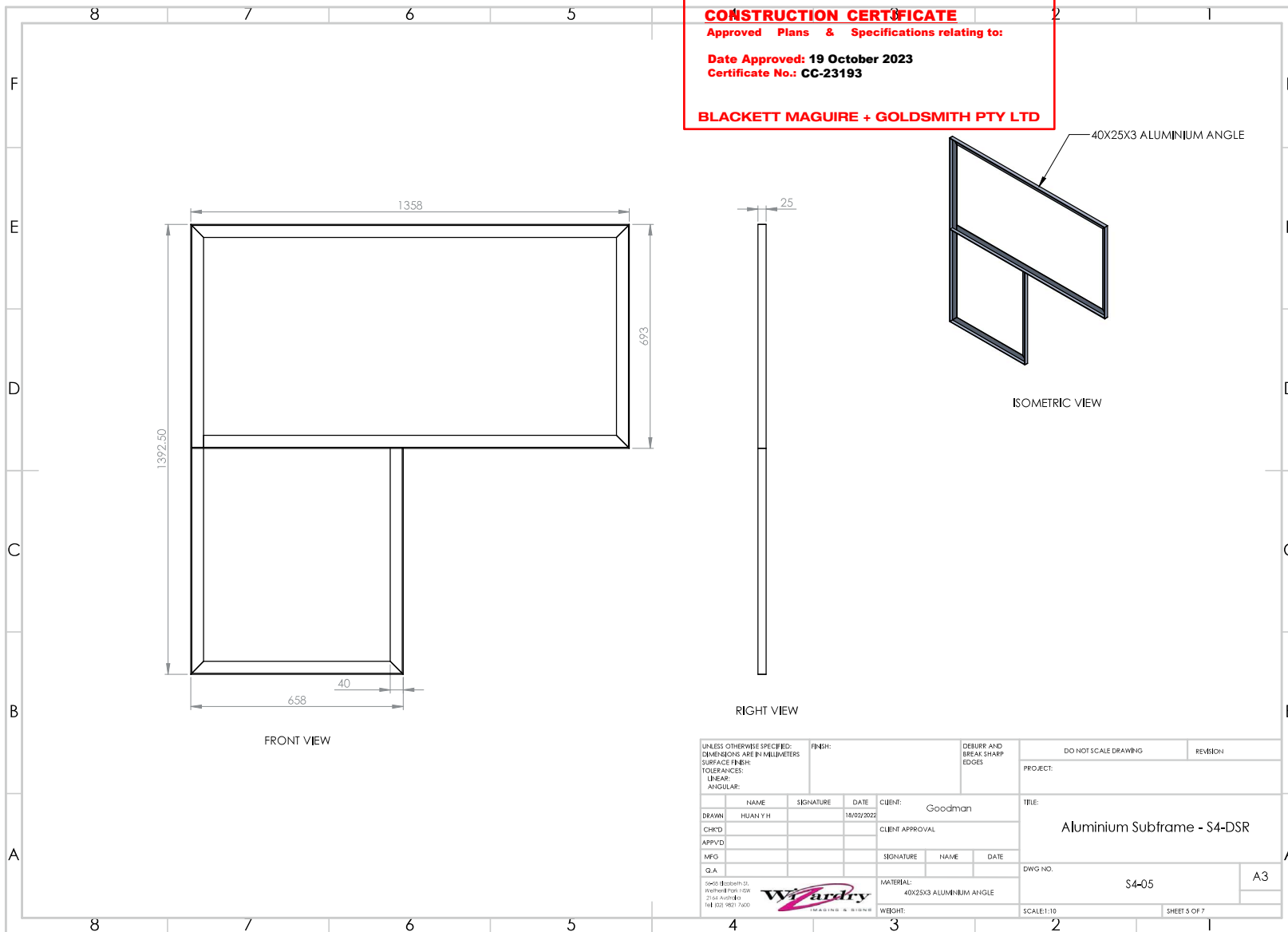
-

Installation Type

Install

THE ABOVE LAYOUT IS FOR YOUR APPROVAL. PLEASE ENSURE YOU CHECK THAT ALL SIZES, CONFIGURATION, SPELLING, LOGO'S & COLOUR'S (WHERE INDICATED) ARE CORRECT.

S4 - Double sided totem - Illuminated



SIGN ID / REFERENCE:

S4 Totem Construction

ISSUE: C
DATE: 13.10.23
SETUP: CW
PM: DY
JOB NO: 8937

SITE
18 Emporium Avenue,
Kemps Creek

CODE

TYPE

ILLUMINATION
Yes

FORMAT
Double sided

QUANTITY
As Shown

SIZE
As Shown

COLOUR

PMS 431C PMS 369C

MATERIALS
Internal frame, ACM, Vinyl,

ACTION
Install new finger totem on
concrete footing

FIXING METHODS
Via concrete footing

Wizardry
IMAGING & SIGNS

56 Elizabeth St, Wetherill Park, NSW 2164
P: 02 9821 7600 | F: 02 9821 7666
E: info@insg.com.au

www.wizardry.com.au

PAGE: 17/35

Site Contact

Michael Trotnar

Contact Number

0409 999 447

Contact email

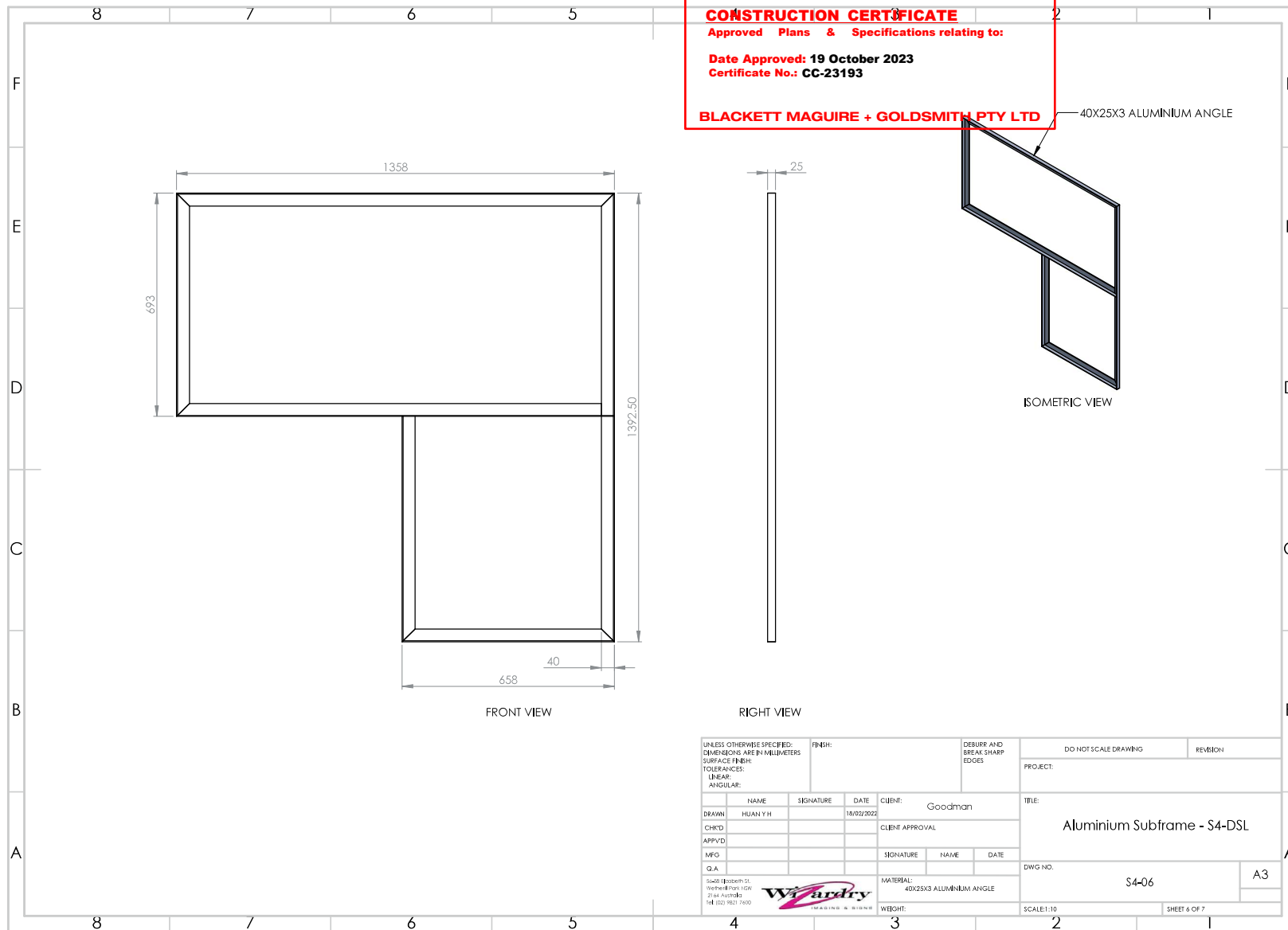
-

Installation Type

Install

THE ABOVE LAYOUT IS FOR YOUR APPROVAL. PLEASE ENSURE YOU CHECK THAT ALL SIZES, CONFIGURATION, SPELLING, LOGO'S & COLOUR'S (WHERE INDICATED) ARE CORRECT.

S4 - Double sided totem - Illuminated



SIGN ID / REFERENCE:

S4 Totem Construction

ISSUE: C
DATE: 13.10.23
SETUP: CW
PM: DY
JOB NO: 8937

SITE
18 Emporium Avenue,
Kemps Creek

CODE

TYPE

ILLUMINATION
Yes

FORMAT
Double sided

QUANTITY
As Shown

SIZE
As Shown

COLOUR

PMS 431C PMS 369C

MATERIALS
Internal frame, ACM, Vinyl,

ACTION
Install new finger totem on
concrete footing

FIXING METHODS
Via concrete footing

Wizdry
IMAGING & SIGNS

56 Elizabeth St, Wetherill Park, NSW 2164
P: 02 9821 7600 | F: 02 9821 7666
E: info@insg.com.au

www.wizardry.com.au

PAGE: 18/35

Site Contact

Michael Trotnar

Contact Number

0409 999 447

Contact email

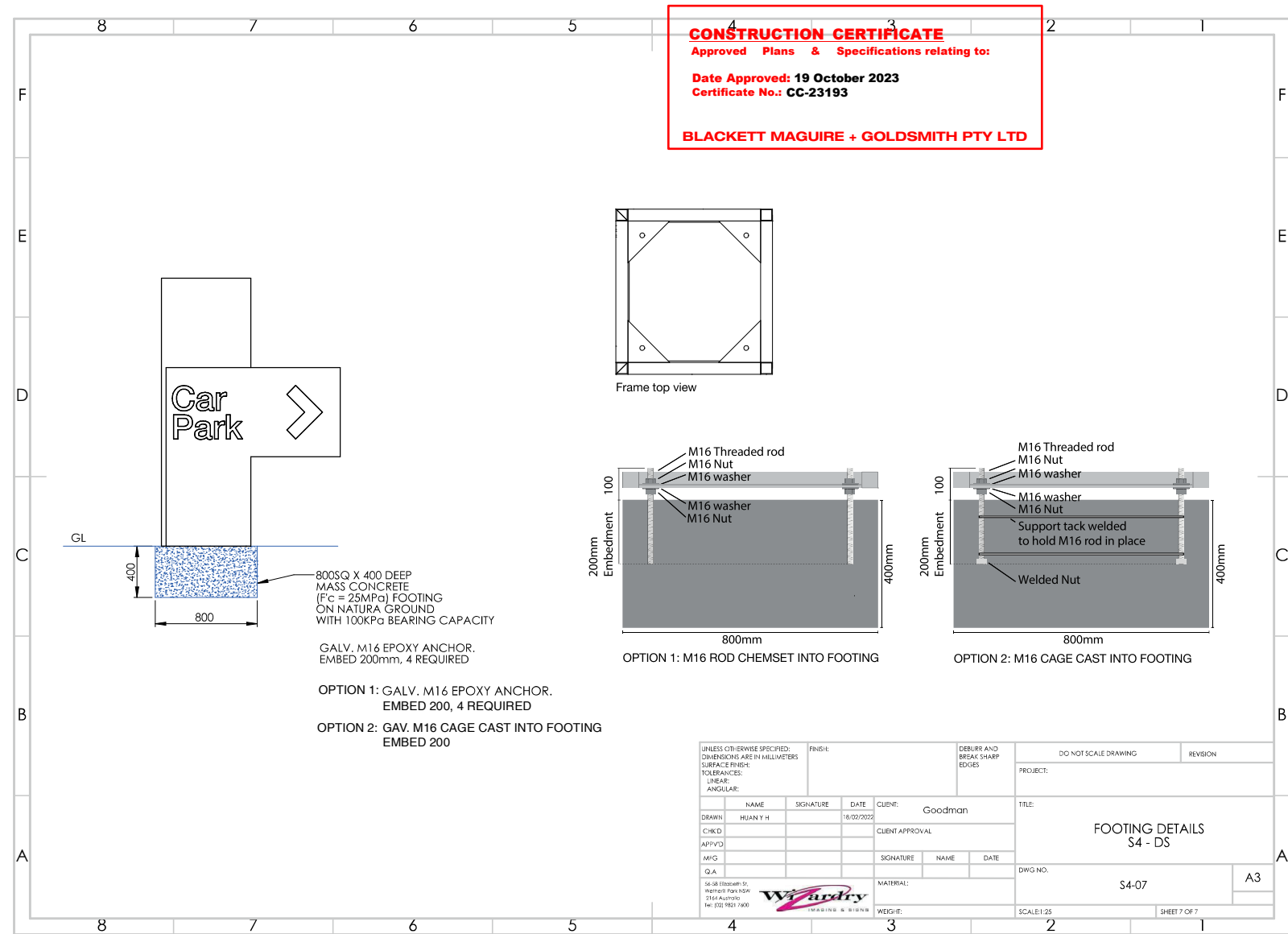
-

Installation Type

Install

THE ABOVE LAYOUT IS FOR YOUR APPROVAL. PLEASE ENSURE YOU CHECK THAT ALL SIZES, CONFIGURATION, SPELLING, LOGO'S & COLOUR'S (WHERE INDICATED) ARE CORRECT.

S4 - Double sided totem - Illuminated



SIGN ID / REFERENCE:
S4 Totem Footing

ISSUE: C
DATE: 13.10.23
SETUP: CW
PM: DY
JOB NO: 8937

SITE
18 Emporium Avenue,
Kemps Creek

CODE
-

TYPE
-

ILLUMINATION
Yes

FORMAT
Double sided

QUANTITY
As Shown

SIZE
As Shown

COLOUR
PMS 431C PMS 369C

MATERIALS
Internal frame, ACM, Vinyl,

ACTION
Install new finger totem on concrete footing

FIXING METHODS
Via concrete footing

Wizardry
IMAGING & SIGNS
56 Elizabeth St, Wetherill Park, NSW 2164
P: 02 9821 7600 | F: 02 9821 7666
E: info@insg.com.au
www.wizardry.com.au

Site Contact
Michael Trotnar

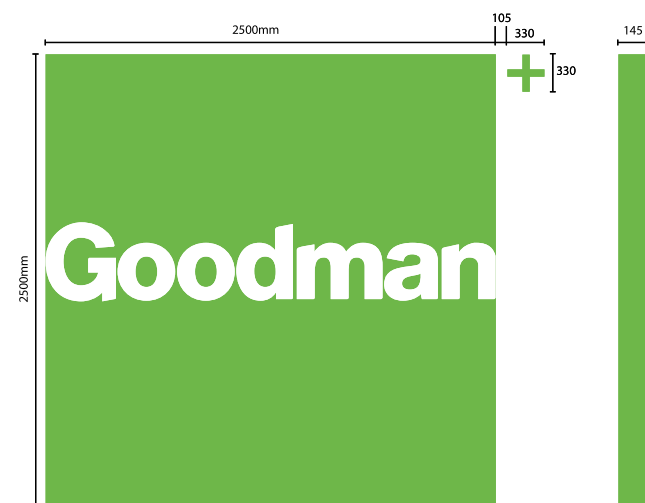
Contact Number
0409 999 447

Contact email
-

Installation Type
Install

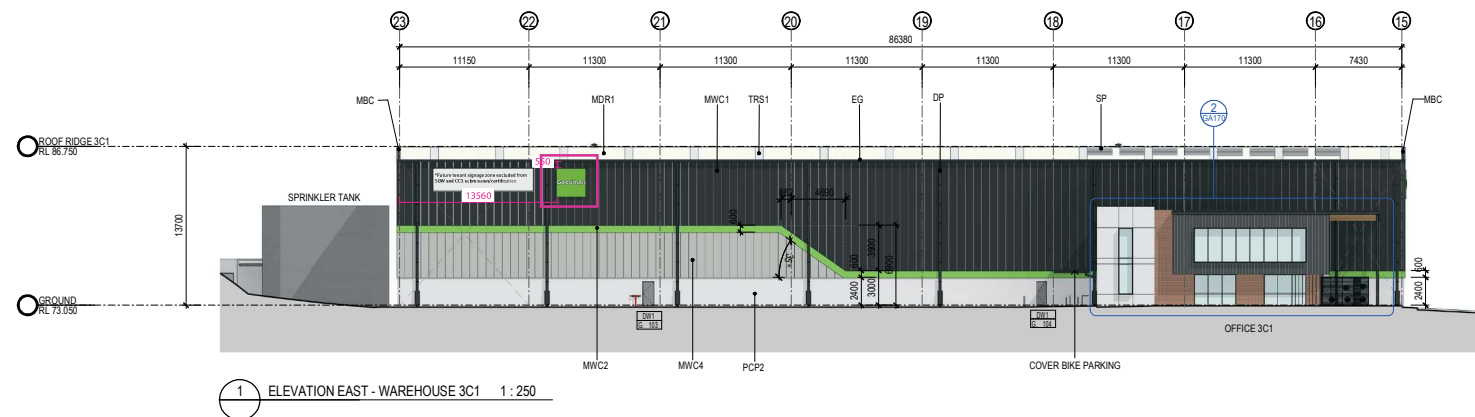
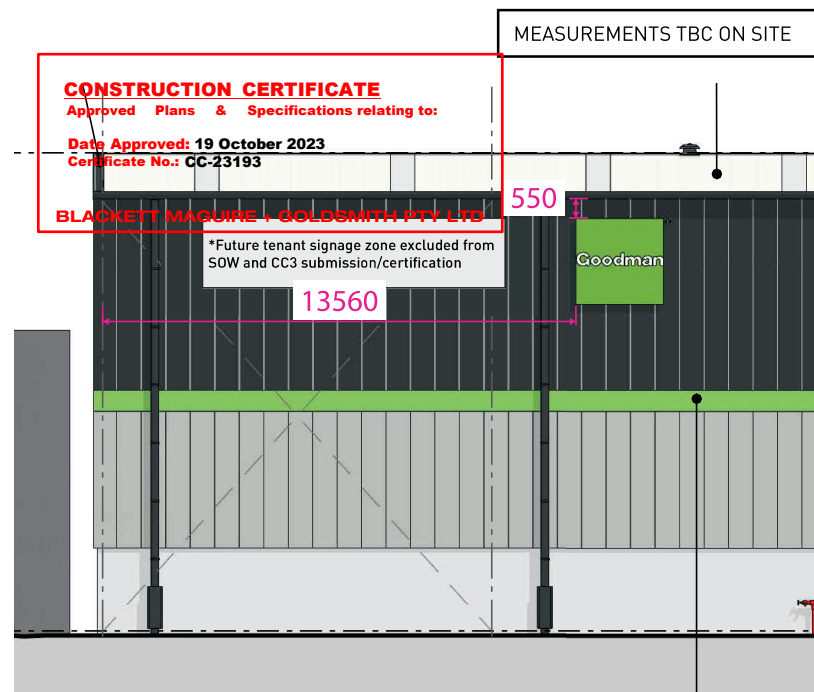
THE ABOVE LAYOUT IS FOR YOUR APPROVAL. PLEASE ENSURE YOU CHECK THAT ALL SIZES, CONFIGURATION, SPELLING, LOGO'S & COLOUR'S (WHERE INDICATED) ARE CORRECT.

S6 - Flexface banner - Illuminated



1x S6 Lightbox
2500 x 2500mm
Custom fabricated backlit illuminated flex face structure with fabricated acrylic '+'
Illuminated with 6500K bright white LED's internally mounted with no visible 'hot-spotting'
Digitally printed fire rated PVC banner with satin clear UV coating.
Mounted direct to wall onsite (will possibly require internal structure on opposite side of wall, TBD on site visit)
Mechanically fixed to facade and building purlins, fixing method to allow lightbox to be removed and relocated

SIDE VIEW



Location 3a

Site Contact	Contact Number	Contact email	Installation Type
Michael Trotnar	0409 999 447	-	Install

THE ABOVE LAYOUT IS FOR YOUR APPROVAL. PLEASE ENSURE YOU CHECK THAT ALL SIZES, CONFIGURATION, SPELLING, LOGO'S & COLOUR'S (WHERE INDICATED) ARE CORRECT.

SIGN ID / REFERENCE: S6 Lightbox - 3a	
ISSUE:	C
DATE:	13.10.23
SETUP:	CW
PM:	DY
JOB NO:	8937
SITE	18 Emporium Avenue, Kemps Creek
CODE	-
TYPE	-
ILLUMINATION	Yes
FORMAT	Single sided
QUANTITY	As Shown
SIZE	As Shown
COLOUR	PMS 369C
MATERIALS	As shown
ACTION	Install new lightbox to building facade
FIXING METHODS	Mechanically fixed to building facade

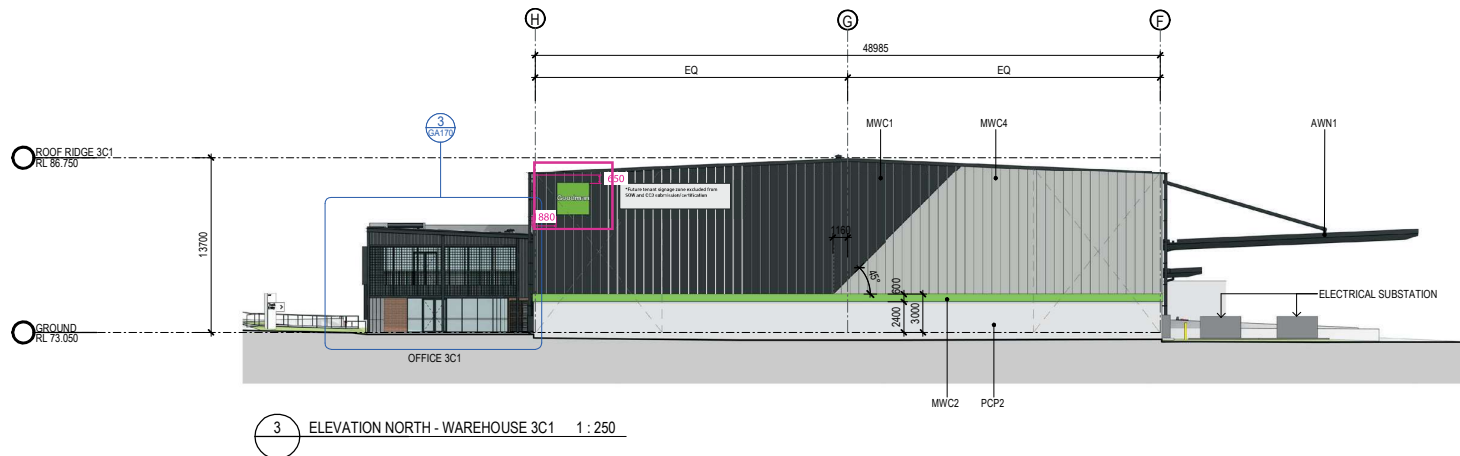
Wizardry
IMAGING & SIGNS

56 Elizabeth St, Wetherill Park, NSW 2164
P: 02 9821 7600 | F: 02 9821 7666
E: info@insg.com.au

www.wizardry.com.au

SIDE VIEW

1880

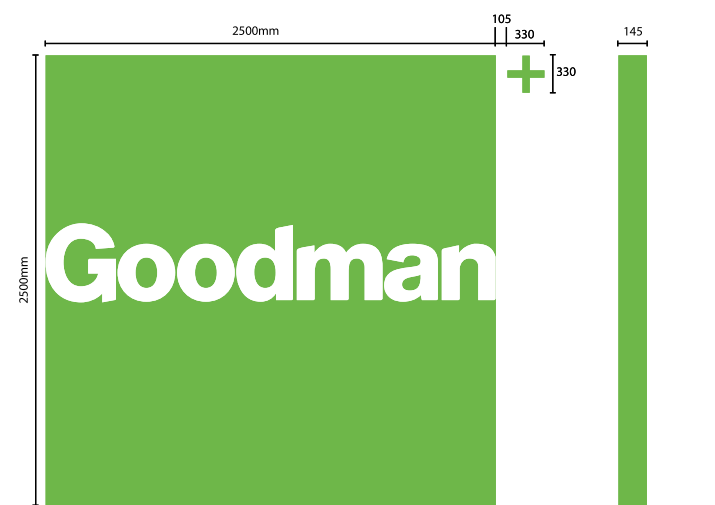


● Location 3b

Installation Type
Install

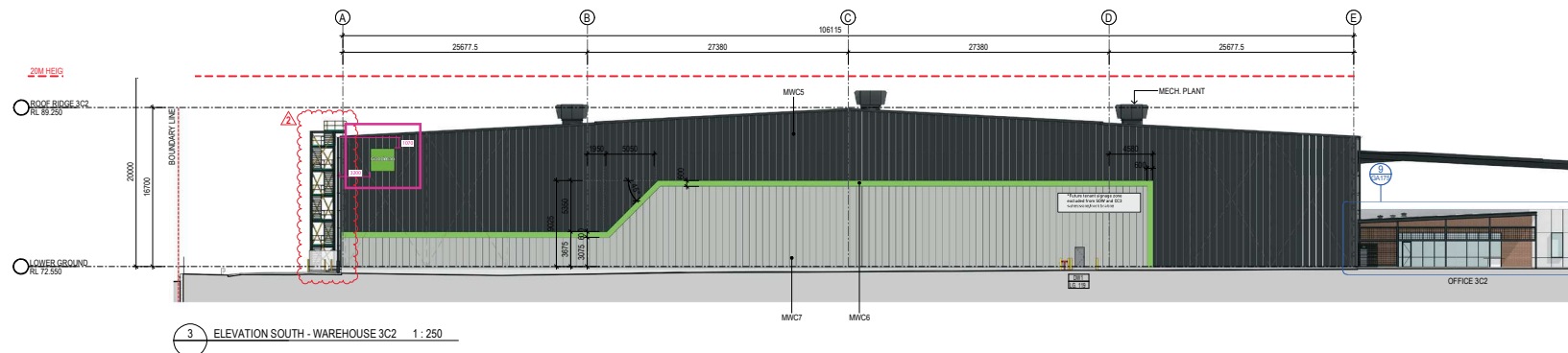
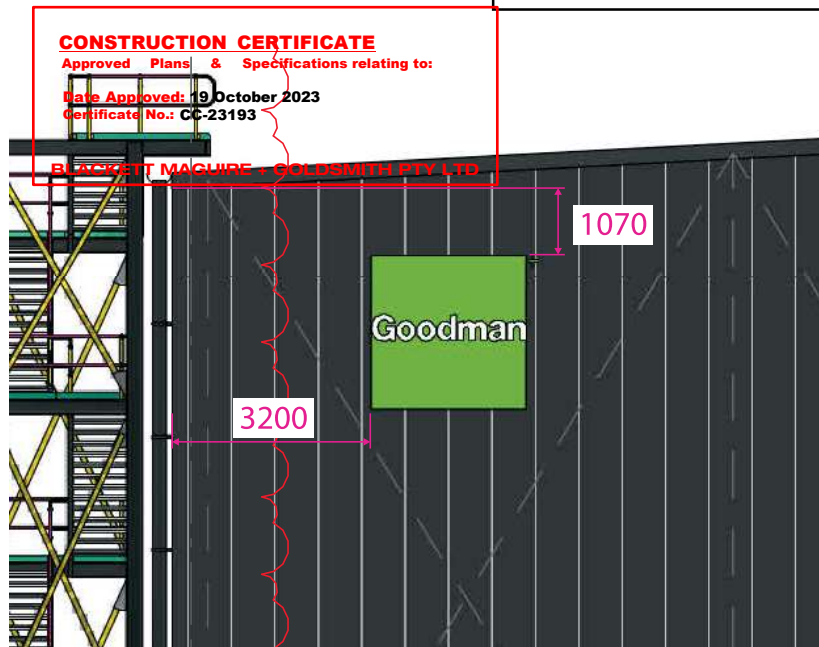
PAGE: 21/35

S6 - Flexface banner - Illuminated



1x S6 Lightbox
2500 x 2500mm
Custom fabricated backlit illuminated flex face structure with fabricated acrylic '+'
Illuminated with 6500K bright white LED's internally mounted with no visible 'hot-spotting'
Digitally printed fire rated PVC banner with satin clear UV coating.
Mounted direct to wall onsite (will possibly require internal structure on opposite side of wall, TBD on site visit)
Mechanically fixed to facade and building purlins, fixing method to allow lightbox to be removed and relocated

SIDE VIEW




● Location 3c

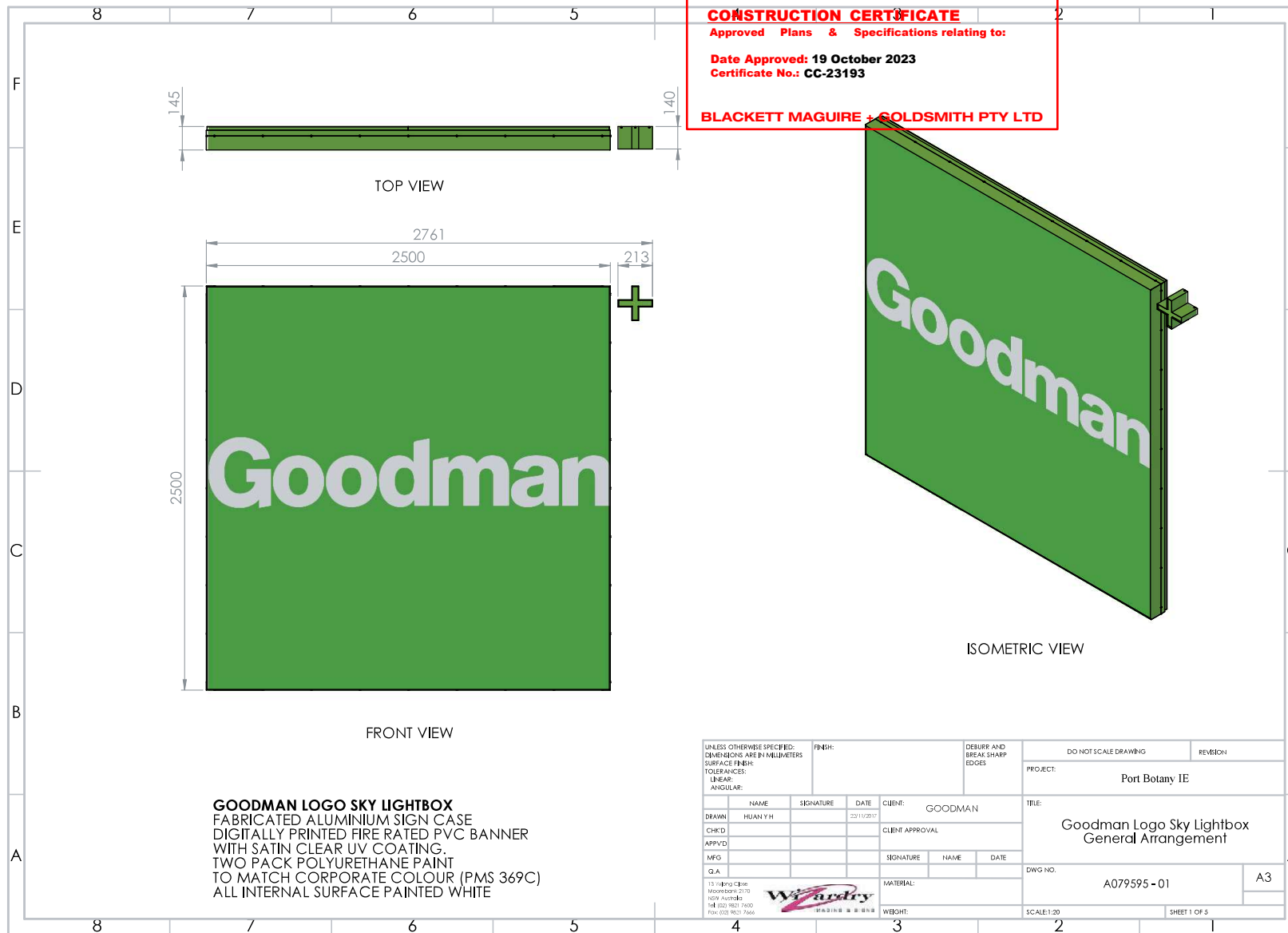
APPROX. SIZES TBC ON SITE

Site Contact	Contact Number	Contact email	Installation Type
Michael Trotnar	0409 999 447	-	Install

THE ABOVE LAYOUT IS FOR YOUR APPROVAL. PLEASE ENSURE YOU CHECK THAT ALL SIZES, CONFIGURATION, SPELLING, LOGO'S & COLOUR'S (WHERE INDICATED) ARE CORRECT.

SIGN ID / REFERENCE: S6 Lightbox - 3c	
ISSUE:	C
DATE:	13.10.23
SETUP:	CW
PM:	DY
JOB NO:	8937
SITE	18 Emporium Avenue, Kemps Creek
CODE	-
TYPE	-
ILLUMINATION	Yes
FORMAT	Single sided
QUANTITY	As Shown
SIZE	As Shown
COLOUR	PMS 369C
MATERIALS	As shown
ACTION	Install new lightbox to building facade
FIXING METHODS	Mechanically fixed to building facade
 56 Elizabeth St, Wetherill Park, NSW 2164 P: 02 9821 7600 F: 02 9821 7666 E: info@insg.com.au www.wizardry.com.au	

S6 - Flexface banner - Illuminated



SIGN ID / REFERENCE:

S6 Lightbox - Construction

ISSUE: C
 DATE: 13.10.23
 SETUP: CW
 PM: DY
 JOB NO: 8937

SITE
 18 Emporium Avenue,
 Kemps Creek

CODE


TYPE

ILLUMINATION
 Yes

FORMAT
 Single sided

QUANTITY
 As Shown

SIZE
 As Shown

COLOUR

 PMS 369C

MATERIALS
 As shown

ACTION
 Install new lightbox to building
 facade

FIXING METHODS
 Mechanically fixed to building
 facade

Wizdry
 IMAGING & SIGNS

56 Elizabeth St, Wetherill Park, NSW 2164
 P: 02 9821 7600 | F: 02 9821 7666
 E: info@insg.com.au

www.wizardry.com.au

PAGE: 23/35

Site Contact

Michael Trotnar

Contact Number

0409 999 447

Contact email

-

Installation Type

Install

THE ABOVE LAYOUT IS FOR YOUR APPROVAL. PLEASE ENSURE YOU CHECK THAT ALL SIZES, CONFIGURATION, SPELLING, LOGO'S & COLOUR'S (WHERE INDICATED) ARE CORRECT.

S6 - Flexface banner - Illuminated

The technical drawing illustrates the specifications for a Flexface banner. It includes four main views: a top view showing a rectangular banner with a width of 2500mm and a height of 2500mm; a front view showing the banner's profile with a height of 2500mm and a width of 2500mm; a side view showing the banner's thickness of 145mm; and an isometric view showing the banner's 3D form with the 'Goodman' logo. A construction certificate is also included, detailing the approved plans and specifications, the date of approval (19 October 2023), the certificate number (CC-23193), and the company name (BLACKETT MAGUIRE + GOLDSMITH PTY LTD).

CONSTRUCTION CERTIFICATE
Approved Plans & Specifications relating to:
Date Approved: 19 October 2023
Certificate No.: CC-23193
BLACKETT MAGUIRE + GOLDSMITH PTY LTD

TOP VIEW

FRONT VIEW

SIDE VIEW

ISOMETRIC VIEW

SECTION A-A

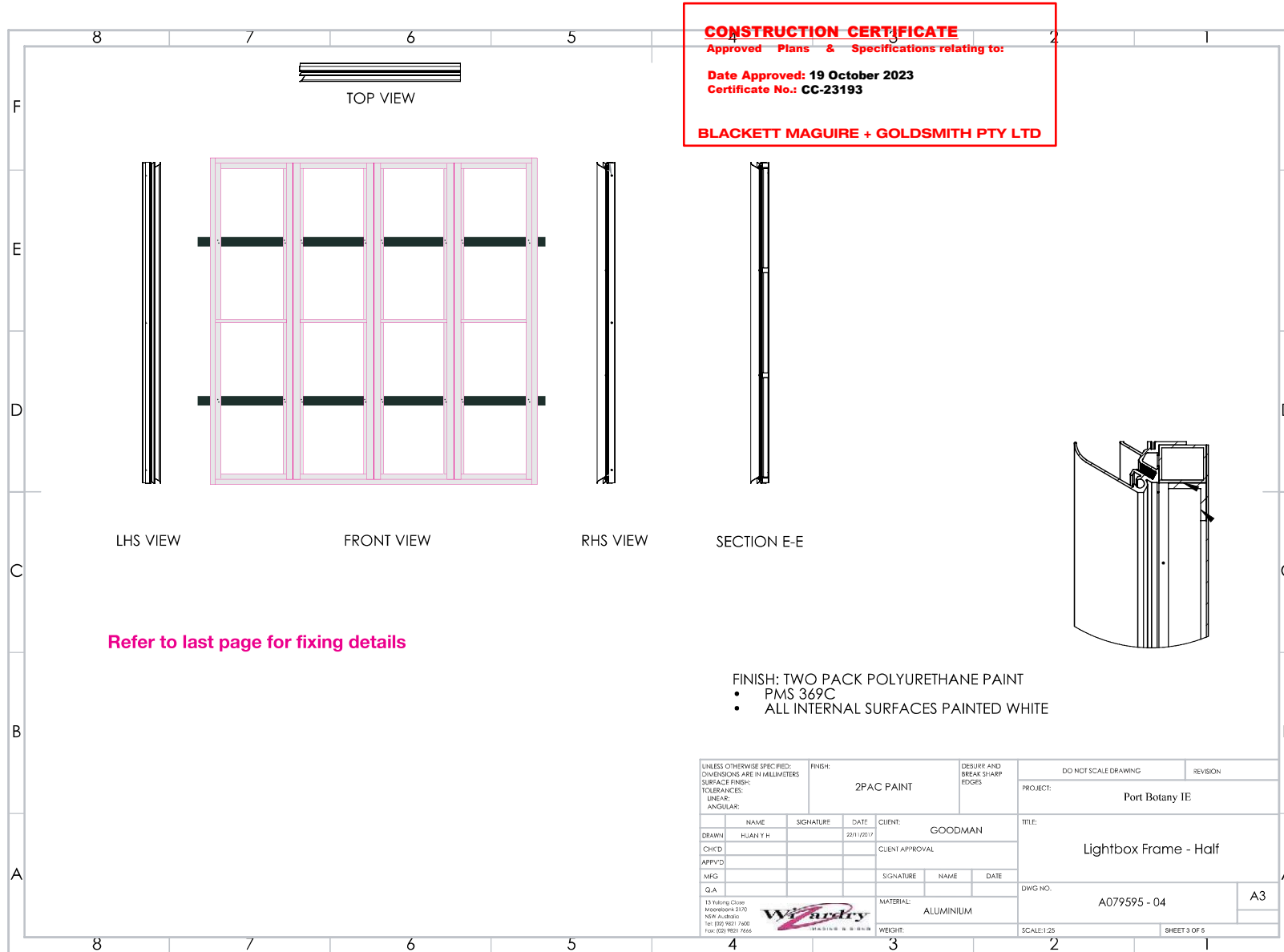
CONSTRUCTION CERTIFICATE
Approved Plans & Specifications relating to:
Date Approved: 19 October 2023
Certificate No.: CC-23193
BLACKETT MAGUIRE + GOLDSMITH PTY LTD

UNLESS OTHERWISE SPECIFIED: DIMENSIONS ARE IN MILLIMETERS SURFACE FINISH: TOLERANCES: LINEAR: ANGULAR:		FINISH:		DEBURR AND BREAK SHARP EDGES		DO NOT SCALE DRAWING		REVISION	
DRAWN: HUAN Y H		SIGNATURE:		DATE: 23/11/2017		CLIENT: GOODMAN		PROJECT: Port Botany IE	
CHK'D:		SIGNATURE:		DATE:		CLIENT APPROVAL:		TITLE: Lightbox General Arrangement	
APP'VD:		SIGNATURE:		DATE:		DWG NO.:		A3	
MFG:		SIGNATURE:		DATE:		SCALE: 1:25		SHEET 2 OF 5	
G.A.:		SIGNATURE:		DATE:		WEIGHT:			

13 Kingsford
Melbourne VIC 3120
NEW Australia
Tel: (03) 9621 7600
Fax: (03) 9621 7666

We audry

S6 - Flexface banner - Illuminated



SIGN ID / REFERENCE:

S6 Lightbox - Construction

ISSUE: C
 DATE: 13.10.23
 SETUP: CW
 PM: DY
 JOB NO: 8937

SITE
 18 Emporium Avenue,
 Kemps Creek

CODE

TYPE

ILLUMINATION
 Yes

FORMAT
 Single sided

QUANTITY
 As Shown

SIZE
 As Shown

COLOUR
 PMS 369C

MATERIALS
 As shown

ACTION
 Install new lightbox to building
 facade

FIXING METHODS
 Mechanically fixed to building
 facade

Wizadry
 IMAGING & SIGNS

56 Elizabeth St, Wetherill Park, NSW 2164
 P: 02 9821 7600 | F: 02 9821 7666
 E: info@insg.com.au

www.wizardry.com.au

PAGE: 25/35

Site Contact

Michael Trotnar

Contact Number

0409 999 447

Contact email

-

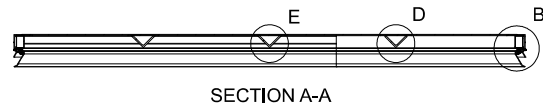
Installation Type

Install

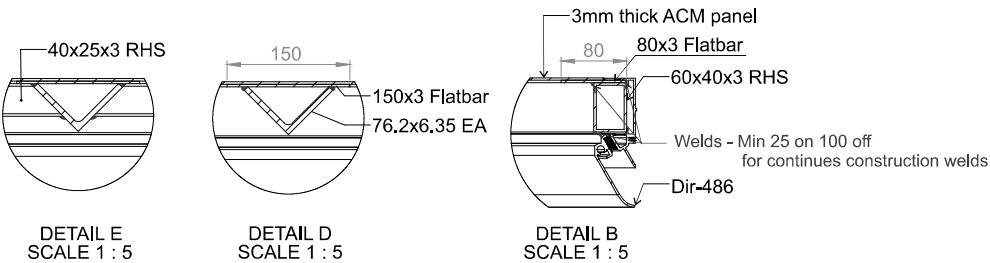
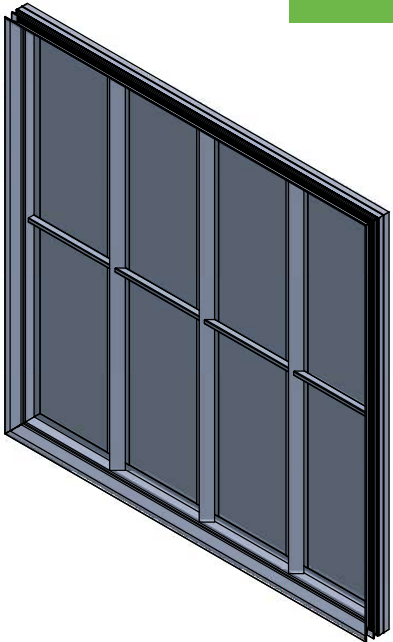
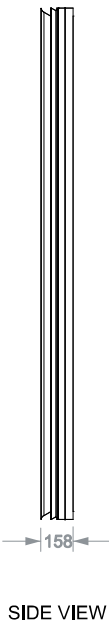
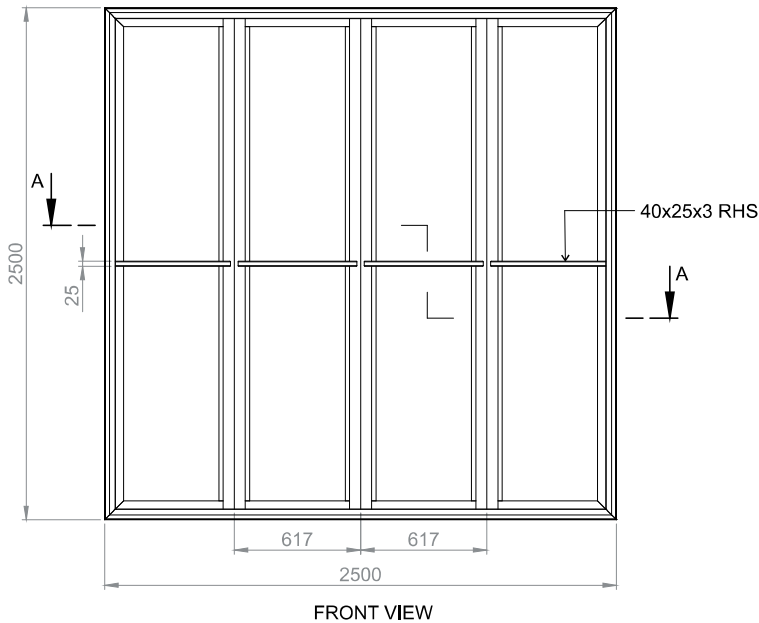
THE ABOVE LAYOUT IS FOR YOUR APPROVAL. PLEASE ENSURE YOU CHECK THAT ALL SIZES, CONFIGURATION, SPELLING, LOGO'S & COLOUR'S (WHERE INDICATED) ARE CORRECT.

S6 - Flexface banner - Illuminated

Lightbox frame detail



CONSTRUCTION CERTIFICATE
Approved Plans & Specifications relating to:
Date Approved: 19 October 2023
Certificate No.: CC-23193
BLACKETT MAGUIRE + GOLDSMITH PTY LTD



Site Contact

Michael Trotnar

Contact Number

0409 999 447

Contact email

-

Installation Type

Install

SIGN ID / REFERENCE:

S6 Lightbox - Construction

ISSUE: C
DATE: 13.10.23
SETUP: CW
PM: DY
JOB NO: 8937

SITE
18 Emporium Avenue,
Kemps Creek

CODE
-

TYPE
-

ILLUMINATION
Yes

FORMAT
Single sided

QUANTITY
As Shown

SIZE
As Shown

COLOUR
PMS 369C

MATERIALS
As shown

ACTION
Install new lightbox to building facade

FIXING METHODS
Mechanically fixed to building facade



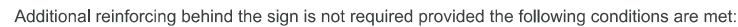
56 Elizabeth St, Wetherill Park, NSW 2164
P: 02 9821 7600 | F: 02 9821 7666
E: info@insg.com.au

www.wizardry.com.au

PAGE: 26/35

THE ABOVE LAYOUT IS FOR YOUR APPROVAL. PLEASE ENSURE YOU CHECK THAT ALL SIZES, CONFIGURATION, SPELLING, LOGO'S & COLOUR'S (WHERE INDICATED) ARE CORRECT.

Fixing detail



1. The sign is secured to at least 2 horizontal building purlins (min BMT 0.8)
 2. The sign cantilever is at most 45% of the sign height and either
 - a. Less than the purlin spacing supporting sign (for signs supported by 3 or more purlins use the smallest spacing) or
 - b. The edge of the sign is within 200mm of a building purlin not supporting the sign.
- All screws Galv. 14g Hex head drill point

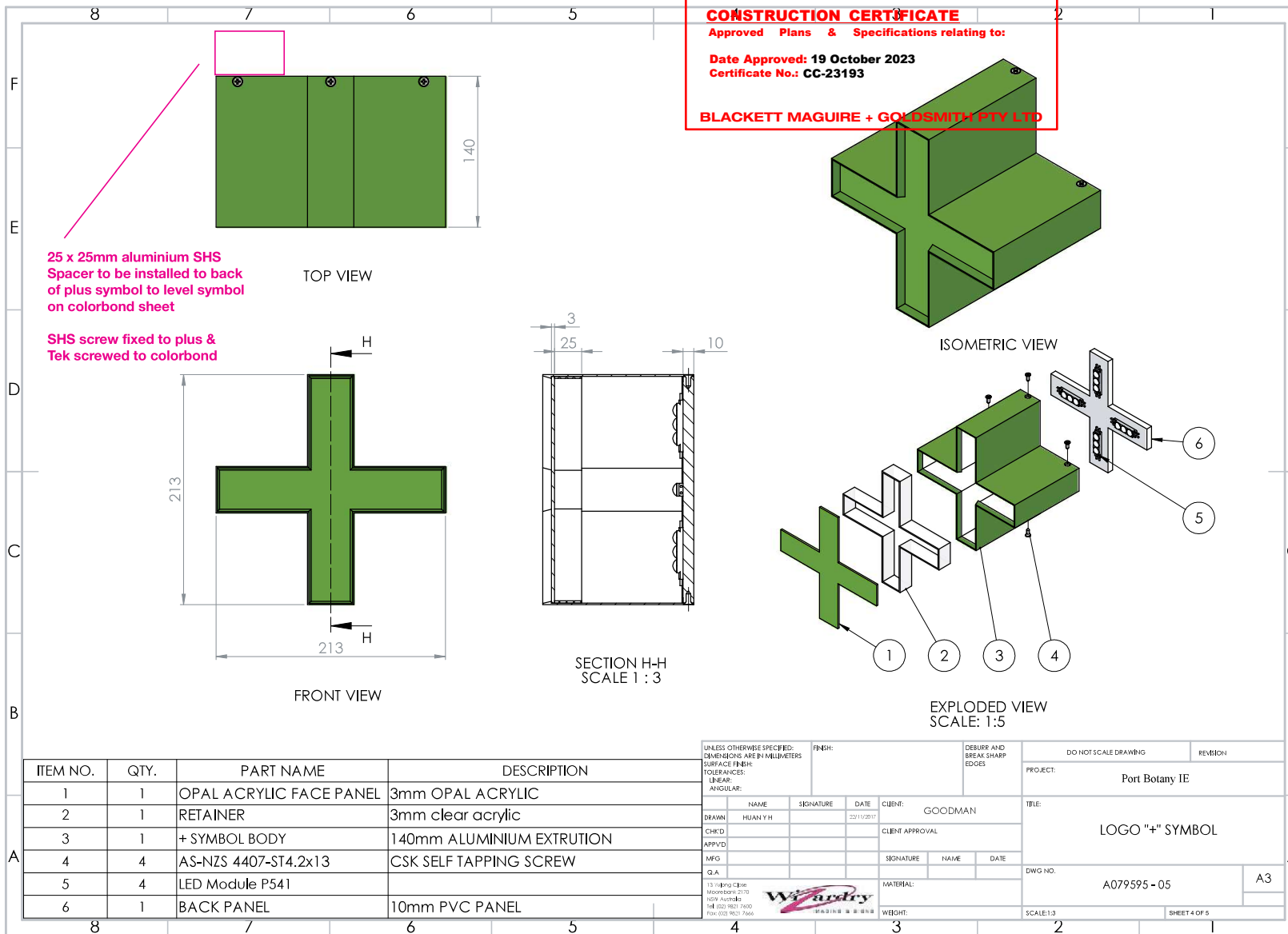
BLACKETT MAGUIRE + GOLDSMITH PTY LTD

PAGE: 27/35

Install

COPYRIGHT © 2020 Wizardry imaging and signs. ALL RIGHTS RESERVED.

S6 - Flexface banner - Illuminated



SIGN ID / REFERENCE:

S6 Lightbox - Construction

ISSUE: C
DATE: 13.10.23
SETUP: CW
PM: DY
JOB NO: 8937

SITE
18 Emporium Avenue,
Kemps Creek

CODE

TYPE

ILLUMINATION
Yes

FORMAT
Single sided

QUANTITY
As Shown

SIZE
As Shown

COLOUR

PMS 369C

MATERIALS
As shown

ACTION
Install new lightbox to building
facade

FIXING METHODS
Mechanically fixed to building
facade

Wiz
IMAGING & SIGNS

56 Elizabeth St, Wetherill Park, NSW 2164
P: 02 9821 7600 | F: 02 9821 7666
E: info@insg.com.au

www.wizardry.com.au

PAGE: 28/35

Site Contact

Michael Trotnar

Contact Number

0409 999 447

Contact email

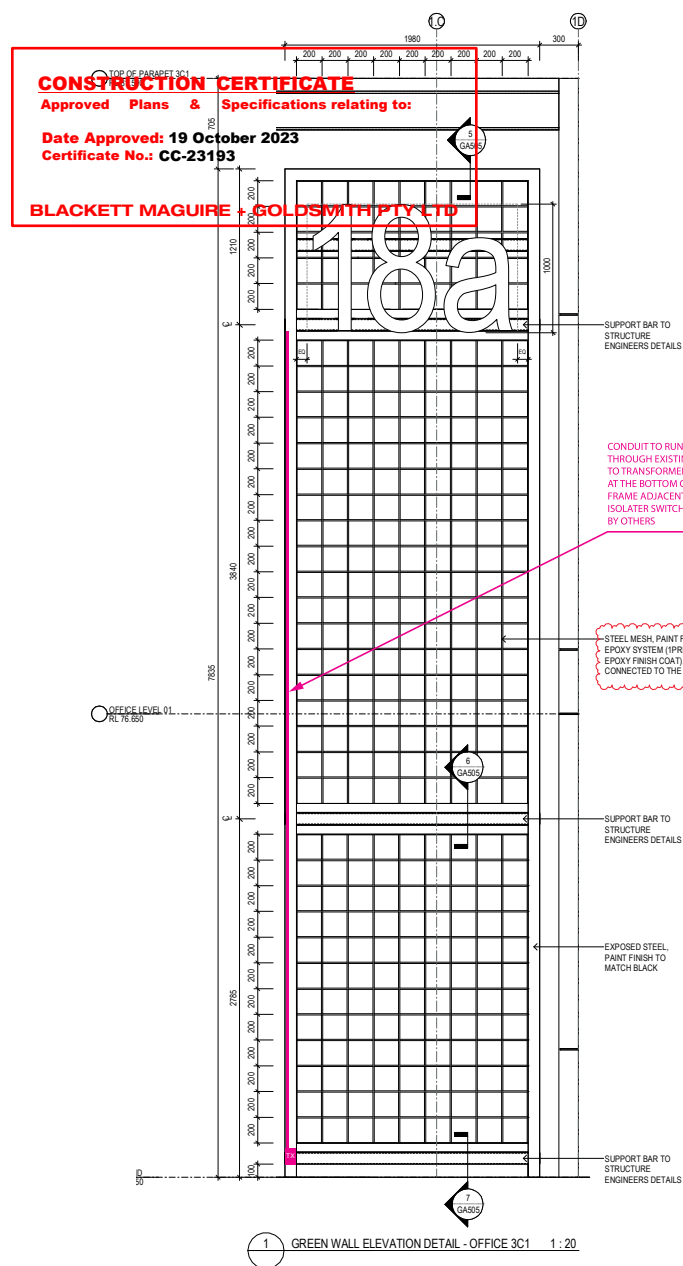
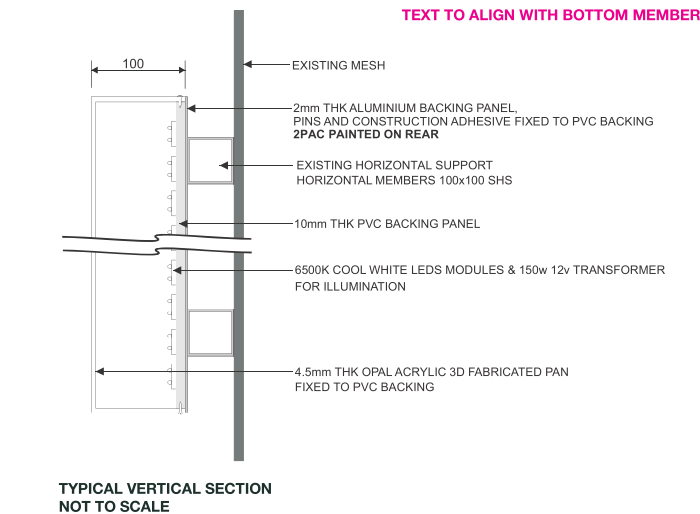
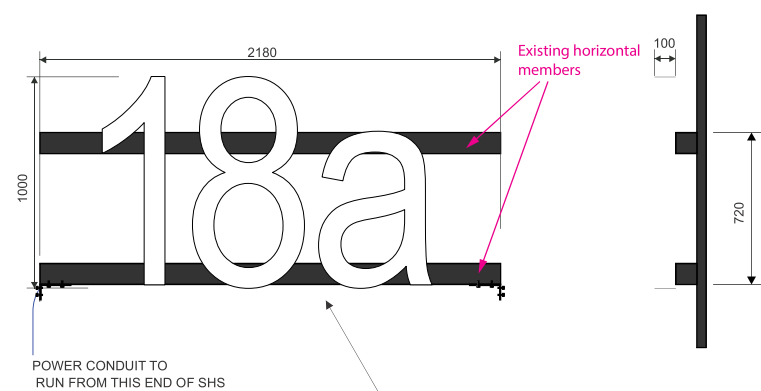
-

Installation Type

Install

THE ABOVE LAYOUT IS FOR YOUR APPROVAL. PLEASE ENSURE YOU CHECK THAT ALL SIZES, CONFIGURATION, SPELLING, LOGO'S & COLOUR'S (WHERE INDICATED) ARE CORRECT.

GREENWALL - WAREHOUSE ID - 18a



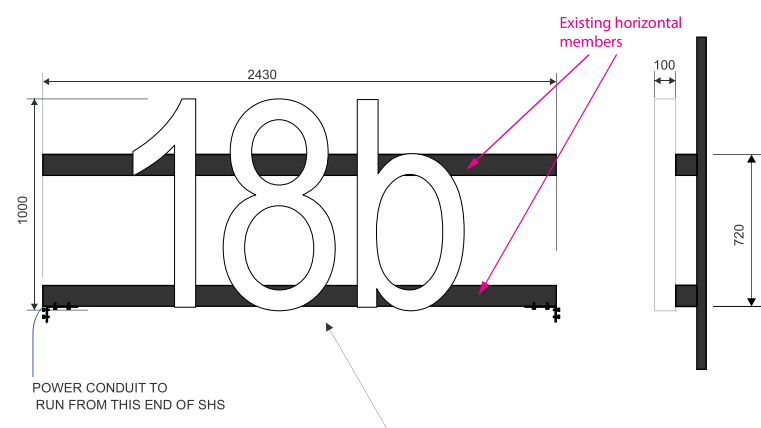
SIGN ID / REFERENCE: Building ID - 18a	
ISSUE:	C
DATE:	13.10.23
SETUP:	CW
PM:	DY
JOB NO:	8937
SITE 18 Emporium Avenue, Kemps Creek	
CODE -	
TYPE -	
ILLUMINATION Yes	
FORMAT Single sided	
QUANTITY As Shown	
SIZE As Shown	
COLOUR Satin white	
MATERIALS As shown	
ACTION Install new building ID to horizontal support	
FIXING METHODS Mechanically fixed	
 56 Elizabeth St, Wetherill Park, NSW 2164 P: 02 9821 7600 F: 02 9821 7666 E: info@insg.com.au www.wizardry.com.au	

● Location 4a

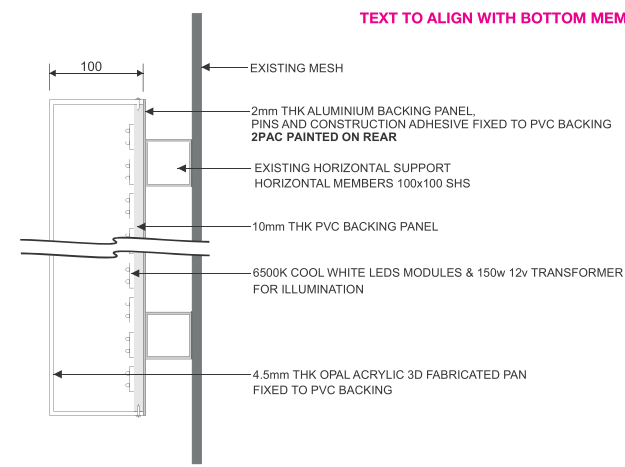
Site Contact Michael Trotnar	Contact Number 0409 999 447	Contact email -	Installation Type Install
---------------------------------	--------------------------------	--------------------	------------------------------

THE ABOVE LAYOUT IS FOR YOUR APPROVAL. PLEASE ENSURE YOU CHECK THAT ALL SIZES, CONFIGURATION, SPELLING, LOGO'S & COLOUR'S (WHERE INDICATED) ARE CORRECT.

GREENWALL - WAREHOUSE ID - 18b

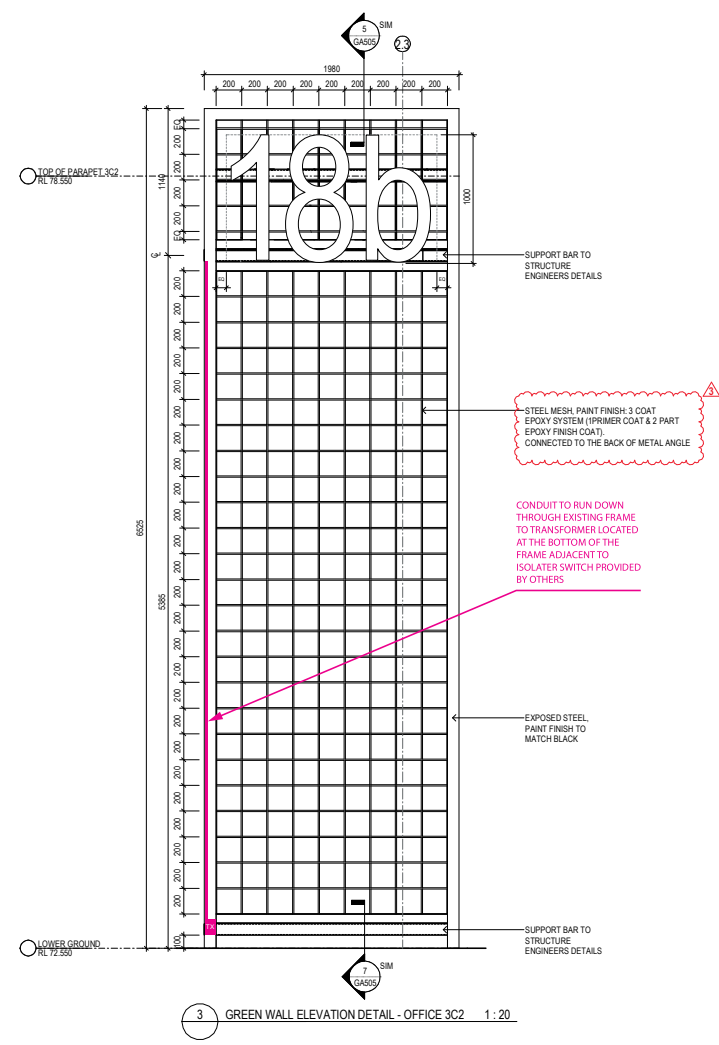


TEXT TO ALIGN WITH BOTTOM MEMBER



TYPICAL VERTICAL SECTION
NOT TO SCALE

CONSTRUCTION CERTIFICATE
Approved Plans & Specifications relating to:
Date Approved: 19 October 2023
Certificate No.: CC-23193
BLACKETT MAGUIRE + GOLDSMITH PTY LTD



● Location 4b

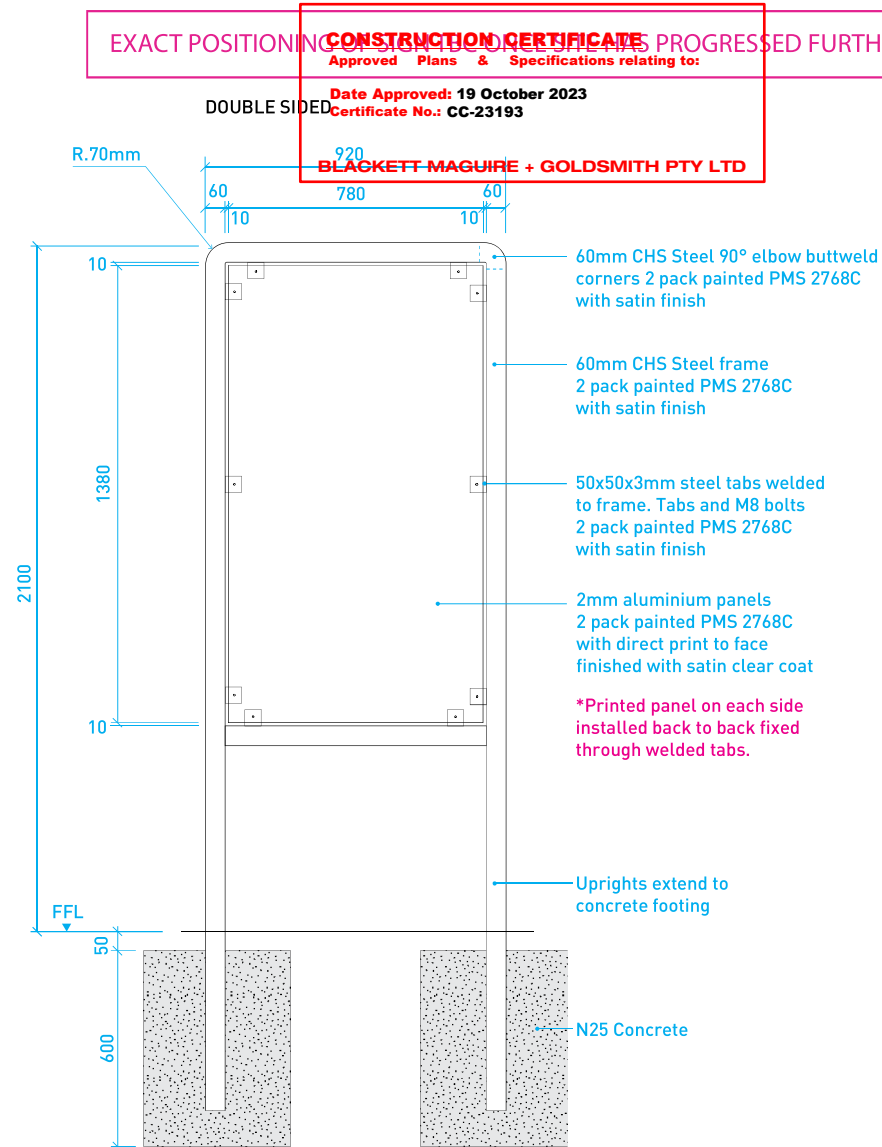
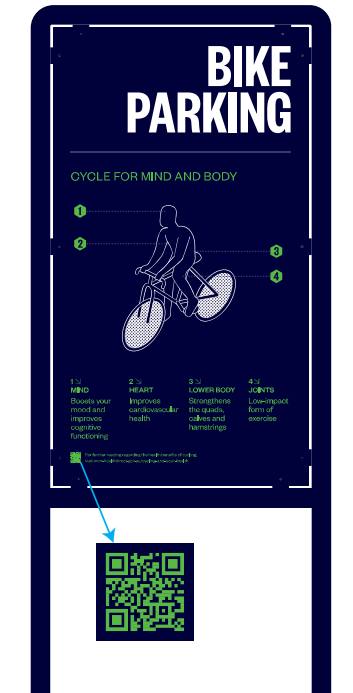
Site Contact	Contact Number	Contact email	Installation Type
Michael Trotnar	0409 999 447	-	Install

THE ABOVE LAYOUT IS FOR YOUR APPROVAL. PLEASE ENSURE YOU CHECK THAT ALL SIZES, CONFIGURATION, SPELLING, LOGO'S & COLOUR'S (WHERE INDICATED) ARE CORRECT.

SIGN ID / REFERENCE: Building ID - 18b	
ISSUE:	C
DATE:	13.10.23
SETUP:	CW
PM:	DY
JOB NO:	8937
SITE 18 Emporium Avenue, Kemps Creek	
CODE -	
TYPE -	
ILLUMINATION Yes	
FORMAT Single sided	
QUANTITY As Shown	
SIZE As Shown	
COLOUR Satin white	
MATERIALS As shown	
ACTION Install new building ID to horiztonal support	
FIXING METHODS Mechanically fixed	
 56 Elizabeth St, Wetherill Park, NSW 2164 P: 02 9821 7600 F: 02 9821 7666 E: info@insg.com.au www.wizardry.com.au	

● Location 5 (a,b)

Artwork:

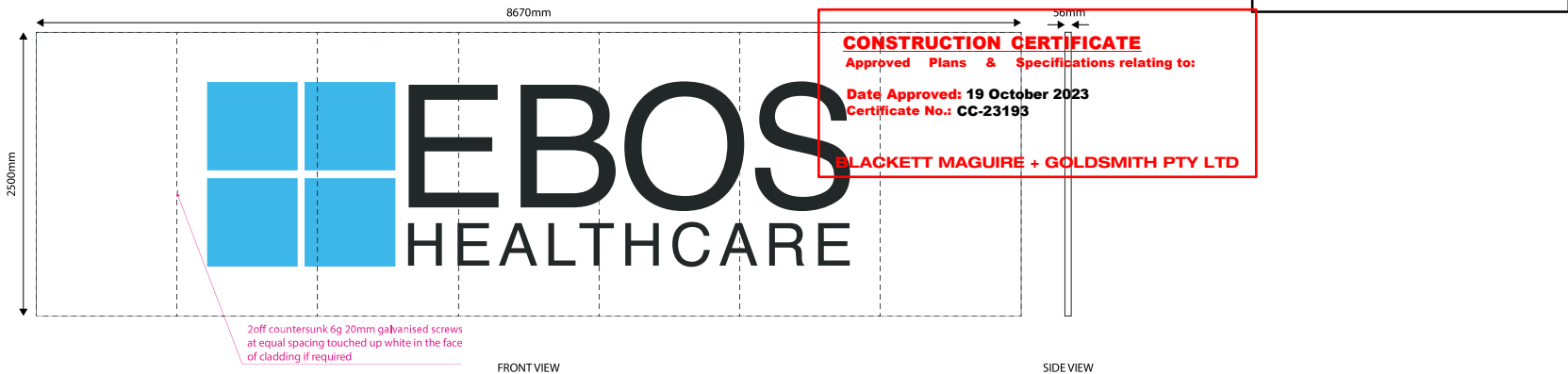


PAGE: 31/35

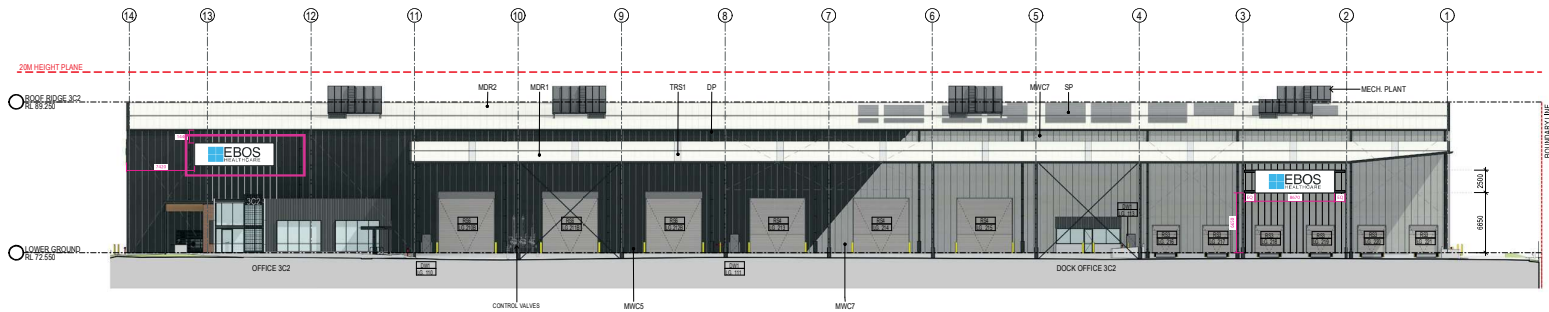
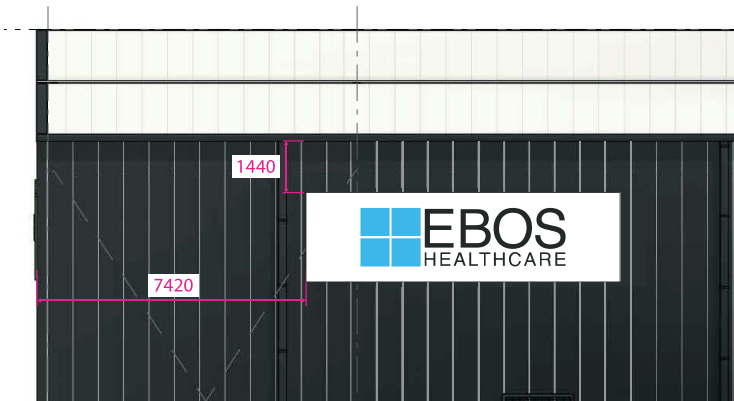
Install

COPYRIGHT © 2020 Wizardry imaging and signs. ALL RIGHTS RESERVED.

Facade mounted sign shoebox



1x Custom fabricated non-illuminated shoebox sign - single sided.
8670 x 2500mm
Constructed from 50x3mm aluminium SHS staging frame clad in
3mm FR ACM sheet in proprietary white
Computer cut vinyl graphics as per the above.
Installed via mechanical fixings to existing facade structure.



NOT TO SCALE. APPROX. SIZES TBC ON SITE

● Location 6

Site Contact	Contact Number	Contact email	Installation Type
Michael Trotnar	0409 999 447	-	Install

THE ABOVE LAYOUT IS FOR YOUR APPROVAL. PLEASE ENSURE YOU CHECK THAT ALL SIZES, CONFIGURATION, SPELLING, LOGO'S & COLOUR'S (WHERE INDICATED) ARE CORRECT.

SIGN ID / REFERENCE: Location 6 Facade Mounted Sign	
ISSUE:	C
DATE:	13.10.23
SETUP:	CW
PM:	DY
JOB NO:	8937
SITE 18 Emporium Avenue, Kemp's Creek	
CODE -	
TYPE -	
ILLUMINATION No	
FORMAT Single sided	
QUANTITY As Shown	
SIZE As Shown	
COLOUR C M Y K	
MATERIALS As shown	
ACTION Install new shoebox sign onto building facade	
FIXING METHODS Mechanically fixed to building facade	

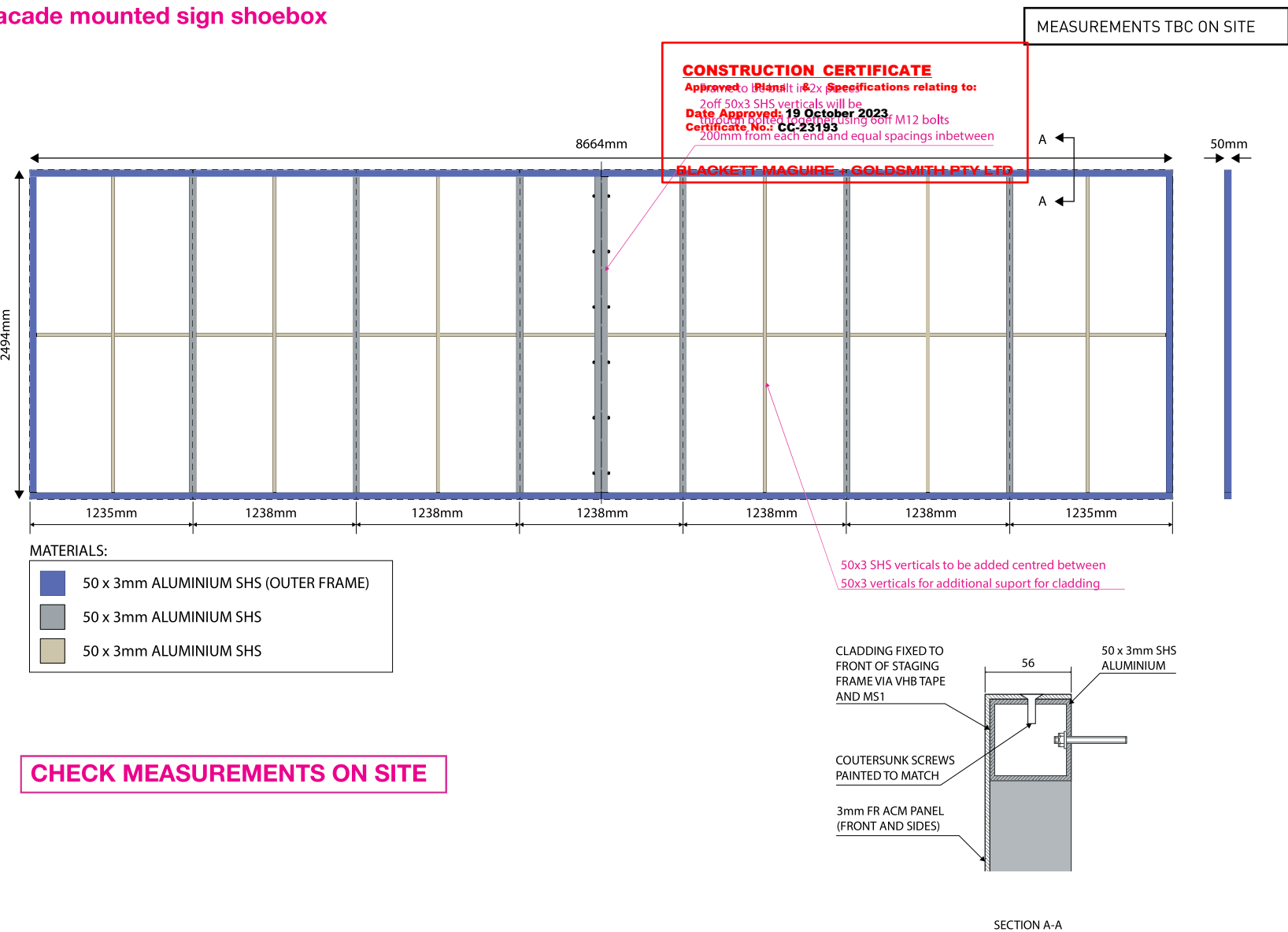
Wizardry
IMAGING & SIGNS

56 Elizabeth St, Wetherill Park, NSW 2164
P: 02 9821 7600 | F: 02 9821 7666
E: info@insg.com.au

www.wizardry.com.au

PAGE: 32/35

Facade mounted shoebox



SIGN ID / REFERENCE:	
Location 6	
Facade Mounted Sign	
ISSUE:	C
DATE:	13.10.23
SETUP:	CW
PM:	DY
JOB NO:	8937
SITE	
18 Emporium Avenue, Kemps Creek	
CODE	
-	
TYPE	
-	
ILLUMINATION	
No	
FORMAT	
Single sided	
QUANTITY	
As Shown	
SIZE	
As Shown	
COLOUR	
C M Y K	
MATERIALS	
As shown	
ACTION	
Install new shoebox sign onto building facade	
FIXING METHODS	
Mechanically fixed to building facade	

● Location 6

Site Contact	Contact Number	Contact email	Installation Type
Michael Trotnar	0409 999 447	-	Install

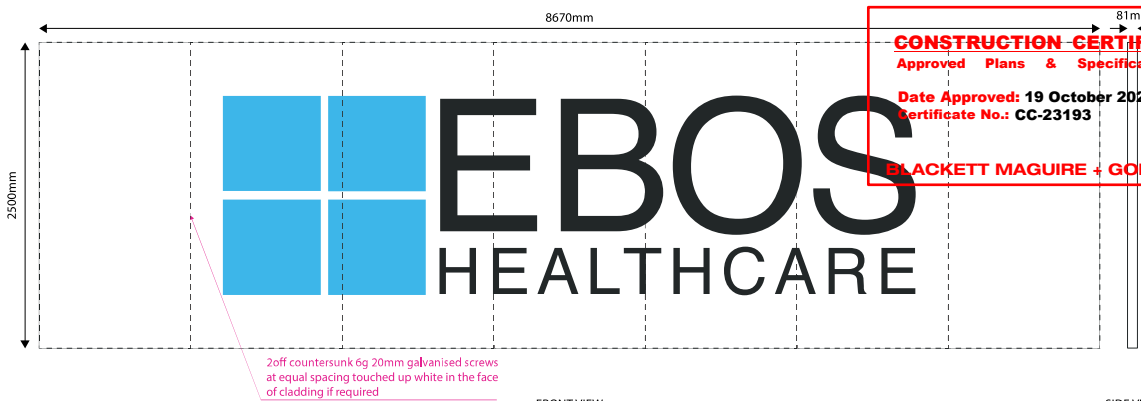
THE ABOVE LAYOUT IS FOR YOUR APPROVAL. PLEASE ENSURE YOU CHECK THAT ALL SIZES, CONFIGURATION, SPELLING, LOGO'S & COLOUR'S (WHERE INDICATED) ARE CORRECT.



56 Elizabeth St, Wetherill Park, NSW 2164
P: 02 9821 7600 | F: 02 9821 7666
E: info@insg.com.au

www.wizardry.com.au

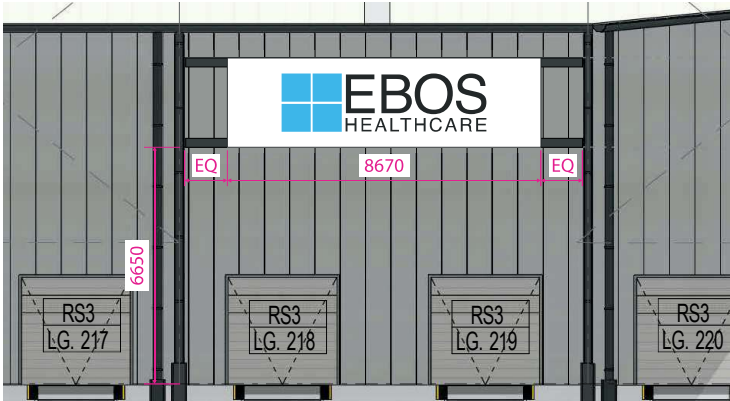
Facade mounted sign shoebox



MEASUREMENTS TBC ON SITE

1x Custom fabricated non-illuminated shoebox sign - double sided.
8670 x 2500mm
Constructed from 75x6.35mm Structural SHS aluminium staging frame clad in
3mm FR ACM sheet in proprietary white
Computer cut vinyl graphics as per the above.
Installed via mechanical fixings to existing awning structure.

SIDE VIEW



● Location 7

NOT TO SCALE. APPROX. SIZES TBC ON SITE

Site Contact	Contact Number	Contact email	Installation Type
Michael Trotnar	0409 999 447	-	Install

THE ABOVE LAYOUT IS FOR YOUR APPROVAL. PLEASE ENSURE YOU CHECK THAT ALL SIZES, CONFIGURATION, SPELLING, LOGO'S & COLOUR'S (WHERE INDICATED) ARE CORRECT.

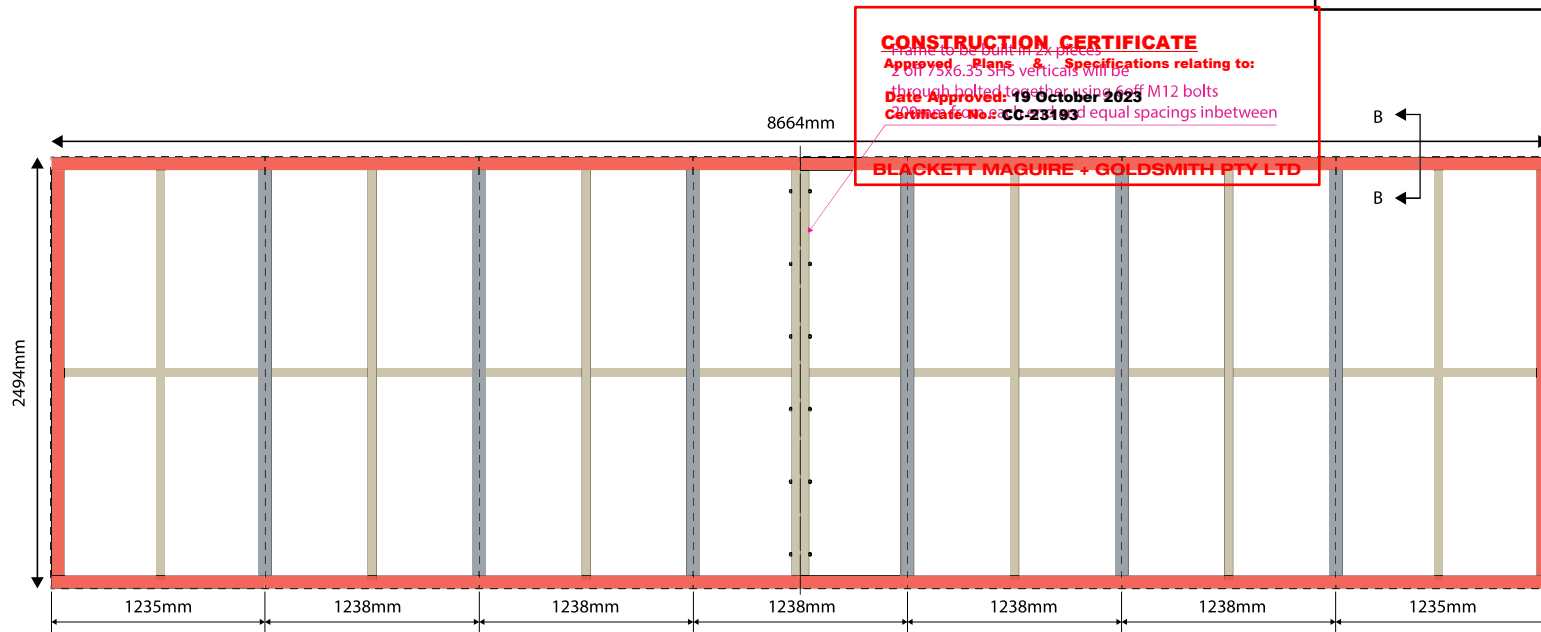
SIGN ID / REFERENCE: Location 7 Awning Mounted Sign	
ISSUE:	C
DATE:	13.10.23
SETUP:	CW
PM:	DY
JOB NO:	8937
SITE 18 Emporium Avenue, Kemps Creek	
CODE -	
TYPE -	
ILLUMINATION No	
FORMAT Single sided	
QUANTITY As Shown	
SIZE As Shown	
COLOUR C M Y K	
MATERIALS As shown	
ACTION Install new shoebox sign onto building facade	
FIXING METHODS Mechanically fixed to building facade	

Wizardry
IMAGING & SIGNS

56 Elizabeth St, Wetherill Park, NSW 2164
P: 02 9821 7600 | F: 02 9821 7666
E: info@insg.com.au

www.wizardry.com.au

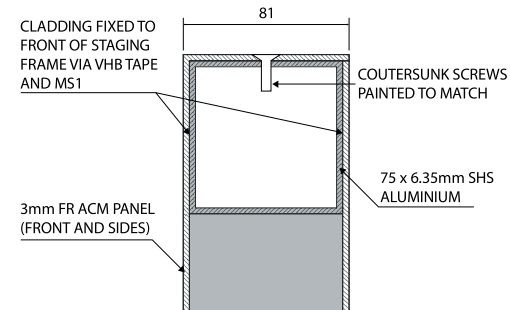
Awning mounted sign shoebox



MATERIALS:

■	75 x 6.35mm ALUMINIUM SHS (OUTER FRAME)
■	75 x 6.35mm ALUMINIUM SHS
■	75 x 50 x 3mm ALUMINIUM RHS

CHECK MEASUREMENTS ON SITE



SECTION B-B

NOT TO SCALE. APPROX. SIZES TBC ON SITE

MEASUREMENTS TBC ON SITE

SIGN ID / REFERENCE:

Location 7
Awning Mounted Sign

ISSUE: C
DATE: 13.10.23
SETUP: CW
PM: DY
JOB NO: 8937

SITE
18 Emporium Avenue,
Kemps Creek

CODE
-

TYPE
-

ILLUMINATION
No

FORMAT
Single sided

QUANTITY
As Shown

SIZE
As Shown

COLOUR



MATERIALS
As shown

ACTION
Install new shoebox sign onto
building facade

FIXING METHODS
Mechanically fixed to building
facade

Location 7

Site Contact

Michael Trotnar

Contact Number

0409 999 447

Contact email

-

Installation Type

Install

THE ABOVE LAYOUT IS FOR YOUR APPROVAL. PLEASE ENSURE YOU CHECK THAT ALL SIZES, CONFIGURATION, SPELLING, LOGO'S & COLOUR'S (WHERE INDICATED) ARE CORRECT.

Wizardry
IMAGING & SIGNS

56 Elizabeth St, Wetherill Park, NSW 2164
P: 02 9821 7600 | F: 02 9821 7666
E: info@insg.com.au

www.wizardry.com.au

PAGE: 35/35

SIGN GENERAL NOTES

GENERAL

1. READ THESE DRAWINGS IN CONJUNCTION WITH ALL OTHER CONSULTANT'S DRAWINGS AND SPECIFICATIONS AND WITH OTHER WRITTEN INSTRUCTIONS AS MAY BE ISSUED.
2. IF IN DOUBT ASK.
3. REFER ANY DISCREPANCY TO THE PROJECT MANAGER BEFORE PROCEEDING.
4. CONSTRUCTION SHALL NOT COMMENCE UNTIL APPROVED BY THE AUTHORITY.
5. ALL MATERIALS AND WORKMANSHIP SHALL BE IN ACCORDANCE WITH THE RELEVANT AND CURRENT AUSTRALIAN STANDARDS AND THE BUILDING CODE OF AUSTRALIA.
6. DO NOT SCALE THESE DRAWINGS FOR DIMENSIONS.
7. ALL SETOUT DIMENSIONS SHALL BE VERIFIED BY THE BUILDER ON SITE.
8. ALL LEVELS ARE IN METRES AND ALL DIMENSIONS ARE IN MILLIMETRES U.N.O.
9. THESE DRAWINGS ARE THE COPYRIGHT OF ELEGANT ENGINEERING AND MUST NOT BE USED, REPRODUCED OR COPIED, WHOLLY OR IN PART, WITHOUT THE WRITTEN PERMISSION OF OVERHEAD ENGINEERING. ALL RIGHTS RESERVED.
10. SEPARATE DISSIMILAR METALS USING DOUBLE SIDED TAPE, NEOPRENE PACKERS AND THE LIKE.
11. ALL FIRE REQUIREMENTS TO MANUFACTURERS DETAILS INCLUDING BUT NOT LIMITED TO FLAMMABILITY AND COMBUSTIBILITY.

LOADING

1. WIND LOADS ARE IN ACCORDANCE WITH AS1170.2 AS FOLLOWS (UNO):
SIGN HEIGHTS LESS THAN 5m AS IMPORTANCE LEVEL: 1,
ANNUAL PROBABILITY OF EXCEEDANCE: 1 in 100,
SIGN HEIGHTS GREATER THAN 5m AS IMPORTANCE LEVEL: 2,
ANNUAL PROBABILITY OF EXCEEDANCE: 1 in 500,
TC2.0, Ms=1.0, MI=1.00, WIND REGION A FOR GENERIC DESIGNS OR WHERE AN ADDRESS IS PROVIDED FOR THE INSTALL LOCATION
THE SERVICE WIND SPEED FOR ALL SIGNS HAS BEEN CONSIDERED AS 80km/h

STRUCTURAL STEELWORK

1. ALL WORKMANSHIP AND MATERIALS (INCLUDING ERECTION AND FABRICATION) SHALL BE IN ACCORDANCE WITH AS4100
2. ALL STRUCTURAL STEEL SHALL COMPLY WITH THE FOLLOWING AUSTRALIAN STANDARDS IN RESPECT OF GRADE AND CONDITIONS OF SUPPLY UNO:
ROLLED SECTIONS AS/NZS 3679.1 GRADE 300
WELDED SECTIONS AS/NZS 3679.2 GRADE 300
HOLLOW SECTIONS AS/NZS 1163 GRADE C350
3. CONNECTION CLEATS SHALL BE 10mm THK UNO AND EITHER: (UNO)
AS/NZS 3678 GRADE 250 PLATE
AS/NZS 3679.1 GRADE 300 FLAT BAR

STRUCTURAL STEELWORK BOLTING

4. ALL BOLTS, NUTS AND WASHERS TO BE GALVANISED.
5. BOLTS SHALL BE IN ACCORDANCE WITH AS1110, AS1111 AND/OR AS/NZS1252 AS APPROPRIATE
6. BOLTS SHALL BE INSTALLED IN ACCORDANCE WITH CLAUSE 15.2.3 OF AS4100 AND BOLTS REQUIRING TENSIONING (8.8/TB AND 8.8/TF) SHALL BE INSTALLED IN ACCORDANCE WITH CLAUSES 15.2.4 AND 15.2.5 OF AS4100 USING EITHER THE PART-TURN METHOD OR A DIRECT-TENSION INDICATION DEVICE. THE TORQUE CONTROL METHOD SHALL NOT BE USED.
7. ALL BOLT HOLES SHALL BE 2mm LARGER THAN THE NOMINAL BOLT DIAMETER EXCEPT WHERE SLOTTED OR OVERSIZE HOLES ARE SHOWN ON THE STRUCTURAL STEEL DETAILS. ALL HOLES SHALL COMPLY WITH CLAUSE 14.3.5 OF AS4100. PLATE WASHERS SHALL BE PROVIDED WHERE REQUIRED BY CLAUSE 14.3.5.

STRUCTURAL STEELWORK WELDING

8. ALL WELDING SHALL BE CARRIED OUT IN ACCORDANCE WITH AS1554.1.
9. ELECTRODES SHALL BE TO EITHER AS1153, AS1838, AS2203 OR AS2717.
10. ALL FILLET WELDS SHALL BE 6mm CONTINUOUS CATEGORY SP USING E48XX ELECTRODES OR EQUIVALENT, U.N.O.
11. ALL BUTT WELDS SHALL BE FULL PENETRATION CATEGORY SP TO AS1554.1, U.N.O.

STEELWORK FINISH

12. THE FINISH OF THE STEELWORK TO BE TO THE MANUFACTURERS DETAILS TO ACHIEVE THE DESIGN LIFE REQUIRED BY THE CLIENT.

ALUMINIUM

1. ALL WORKMANSHIP AND MATERIALS SHALL BE IN ACCORDANCE WITH AS1664 EXCEPT WHERE VARIED BY THE CONTRACT DOCUMENTS.
2. ALL WELDING SHALL BE IN ACCORDANCE WITH AS1665-2004.
3. UNLESS NOTED OTHERWISE, ALL FILLET WELDS SHALL BE 4mm CONTINUOUS.
4. REFER TO COMPONENT DETAILS FOR ALUMINIUM ALLOY AND TEMPER. WHERE NOT SPECIFIED 6063-T5 HAS BEEN ASSUMED FOR EXTRUSIONS AND 5083-H116 FOR FLAT/PLATE.
5. ALUMINIUM IS TO BE SEPARATED FROM CONCRETE/TIMBER AND OTHER POROUS MATERIALS TO PREVENT DIRECT CONTACT WITH AN INERT LAYER SUCH AS PLASTIC, PAINT, END PLUGS ETC TO THE MANUFACTURERS DETAILS.

PROPRIETY ITEMS

1. PROPRIETY ITEMS SHALL BE INSTALLED STRICTLY IN ACCORDANCE WITH THE MANUFACTURERS SPECIFICATION U.N.O.
2. FRANGIBILITY PERFORMANCE OF SIGNS WHERE REQUIRED IS TO BE ACHIEVED USING PROPRIETARY PRODUCTS APPROVED BY THE RELEVANT AUTHORITY AND IS EXCLUDED FROM OUR DESIGN AND CERTIFICATION WHICH IS LIMITED TO WIND AND SELF WEIGHT ONLY.

CONCRETE

1. CONSTRUCTION SHALL BE IN ACCORDANCE WITH AS3600 & AS1379 EXCEPT WHERE VARIED BY THE CONTRACT DOCUMENTS.
2. ADMIXTURES SHALL NOT BE USED UNLESS APPROVED IN WRITING.
3. NO HOLES, CHASES OR EMBEDMENT OF PIPES OTHER THAN THOSE SHOWN ON THE DRAWINGS SHALL BE MADE IN CONCRETE MEMBERS WITHOUT THE WRITTEN APPROVAL OF THE ENGINEER.
4. ALL CONCRETE SHALL BE COMPACTED WITH MECHANICAL VIBRATORS.
5. THE FINISHED CONCRETE SHALL BE A DENSE HOMOGENEOUS MASS, COMPLETELY FILLING THE FORMWORK THOROUGHLY EMBEDDING THE REINFORCEMENT AND FREE FROM HONEYCOMBING.
6. CURING OF ALL CONCRETE SHALL BE ACHIEVED BY KEEPING SURFACES COMPLETELY WET FOR A PERIOD OF 5 DAYS FOLLOWED BY A GRADUAL DRYING OUT. MINIMUM CURING TIME PRIOR TO LOADING FOOTINGS SHALL BE 72 HOURS.
7. REINFORCEMENT IS REPRESENTED DIAGRAMMATICALLY AND NOT NECESSARILY IN TRUE PROJECTION.
8. ALL REINFORCEMENTS SHALL BE FIRMLY SECURED.
9. ALL REINFORCEMENT SHALL BE AS FOLLOWS TO AS4671
N GRADE 500 NORMAL DUCTILITY DEFORMED BAR.
R GRADE 250 NORMAL DUCTILITY PLAIN ROUND BAR.
10. SITE BENDING OF DEFORMED REINFORCING BARS SHALL BE DONE WITHOUT HEATING USING MECHANICAL BENDING TOOLS.
11. WELDING OF REINFORCEMENT SHALL NOT BE PERMITTED UNLESS SHOWN ON THE STRUCTURAL DRAWINGS OR APPROVED BY THE ENGINEER.
12. MIN CONCRETE QUALITY SHALL BE AS FOLLOWS UNO

CONCRETE QUALITY						
ELEMENT	F _c AT 28 DAYS	SLUMP	MAX. AGGREG.	COVER (mm)		
	(MPa)	(mm)	(mm)	INTERNAL	EXTERNAL	GROUND
PIERS & PADS	32	120	20	-	-	65

FOUNDATIONS

1. HAVE BEEN DESIGNED WITH THE FOLLOWING ALLOWABLE BEARING CAPACITIES (UNO) AND ARE TO BE ASSESSED BY THE INSTALLER ON SITE.
1.1. PAD FOOTINGS 50kPa.
1.2. PIERED FOOTINGS 100kPa.
2. THESE ARE APPROXIMATE DESCRIPTIONS OF SOIL ALLOWABLE BEARING CAPACITIES.
2.1. 50kPa IS LOOSE SAND AND IS DESCRIBED AS DEPOSITS READILY REMOVABLE BY SHOVELING ONLY AND INTO WHICH ARE SHARP POINTED WOODEN POST 50mm SQUARE CAN EASILY BE DRIVEN WITH A HAMMER NOT EXCEEDING 5kg
2.2. 100 kPa IS MEDIUM DENSE SAND OR GRAVEL DEPOSITS REMOVABLE BY VIGOROUS SHOVELING AND INTO WHICH A SHARP POINTED WOODEN POST 50mm SQUARE CAN EASILY BE DRIVEN WITH A HAMMER NOT EXCEEDING 5kg.
2.3. 100 kPa IS FIRM CLAY WHICH MAY WITH MODERATE EFFORT BE PENETRATED TO A DEPTH OF 50mm BY THE THUMB.
2.4. AS A FURTHER ASSESSMENT AN 80kg PERSON WITH THEIR LOAD SPREAD OVER A 10cmx10cm BOARD WILL EXERT A PRESSURE OF 80kPa.
3. FOOTINGS SHALL BE CONSTRUCTED AND BACKFILLED AS SOON AS POSSIBLE FOLLOWING EXCAVATION. EXCAVATIONS SHALL BE KEPT FREE OF PONDED WATER.
4. LOCATE AND PROTECT ALL SERVICES PRIOR TO EXCAVATION.
5. INSTALLER TO ASSESS POTENTIAL UNDERMINING OF EXISTING STRUCTURES IF FOOTING OF EXISTING STRUCTURE IS WITHIN 3 METRES OF NEW FOOTING.
6. BATTER EXCAVATION BACK TO ADJACENT SLOPE AT 1:4 GRADE AS REQUIRED.

EPOXY ANCHORS

1. ALL EPOXY ANCHORS ARE TO BE HOT DIP GALVANISED UNO
2. THREADED ROD IS TO BE MIN GRADE 4.6 TYPICALLY AND MIN GRADE 5.8 FOR HEAVY DUTY APPLICATIONS UNO.
3. USE STANDARD EMBEDMENT DEPTHS AS FOLLOWS UNO

SIZE	M8	M10	M12	M16	M20	M24
DEPTH	80	90	110	125	170	210
5. CORE DRILLED AND/OR WET HOLES REQUIRE HEAVY DUTY EPOXY
6. EPOXY SHALL BE AS FOLLOWS INSTALLED IN ACCORDANCE WITH THE MANUFACTURERS RECOMMENDATIONS.
6.1. STANDARD WHERE NOT OTHERWISE SPECIFIED:
HILTI HY-200
RAMSET CHEMSET 101 PLUS
POWERS K2 OR AC108
6.2. HEAVY DUTY:
HILTI HVU
RAMSET REO 502
POWERS PF PRO
6.3. BRICKWORK OR HOLLOW BLOCKWORK SUBSTRATE:
HILTI HY-110
RAMSET CHEMSET 101 PLUS
POWERS K2 OR AC108
7. CONCRETE SHALL BE CURED FOR AT LEAST 21 DAYS PRIOR TO INSTALLING EPOXY ANCHORS.
8. EPOXY ANCHORS INSTALLED INTO CONCRETE LESS THAN 21 DAYS OLD SHALL BE RAMSET CHEMSET REO502 REGARDLESS OF WHETHER ANOTHER PRODUCT HAS BEEN SPECIFIED AND THE CONCRETE SHALL HAVE ACHIEVED A MIN STRENGTH OF 25MPa WHICH CAN BE ACHIEVED USING N40 CONCRETE CURED FOR AT LEAST 7 DAYS.

REV	DATE	DESCRIPTION	Project		
			Dwg Title		
			SIGN GENERAL NOTES		
			Designed	Scale	Job No. / Dwg No. / Rev
			Brandon Prentice	N.T.S.	
			0413 797 890	Size	A4
© ELEGANT ENGINEERING					
General Notes Rev D.dwg					

ELEGANT
ENGINEERING

Ph (02) 9674 7601
mail@elegantengineering.com.au
ABN 49 613 740 668