

LOT 2C & 2D, KEMPS CREEK, OAKDALE WEST ESTATE

CONSTRUCTION CERTIFICATE

Approved Plans & Specifications relating to:

DRAWING LIST

Date Approved: 13 December 2022

Certificate No.: CC-22247

Project Name

BLACKETT MAGUIRE + GOLDSMITH PTY LTD

SHEET NUMBER

000 GENERAL INFORMATION

GA000 COVERPAGE

100 WAREHOUSE PLANS

GA100 SITE PLAN

GA101 WAREHOUSE PLAN 2C1

GA102 WAREHOUSE PLAN 2C2

GA103 WAREHOUSE PLAN 2D

GA115 ROOF PLAN

160 WAREHOUSE ELEVATION & SECTIONS

GA160 ELEVATIONS - WAREHOUSE 2C

GA161 ELEVATIONS - WAREHOUSE 2C- COLOURED

GA162 ELEVATIONS - WAREHOUSE 2D

GA163 ELEVATIONS - WAREHOUSE 2D - COLOURED

GA165 SECTIONS - WAREHOUSE

GA166 SECTIONS - WAREHOUSE

FENCE-1

CHAN WIRE FENCING

FENCE-2

PALISADE FENCING

HR

HANDRAIL TO BCA COMPLIANCE
REFER TO GA 6/5/2

G/S1

SECURITY GATE - SLIDING

G/S2

FIRE BRIGADE ACCESS GATE - SLIDING

GM

GATE SWING - MANUAL (BRIGADE KEY)

GP

PEDESTRIAN SWING GATE

RW

RETAINING WALL

LEGEND:

| | | | |
|---------------|---|--------|--|
| ABBREVIATION: | | | |
| AF | AWNING FASCIA | FB | FACE BRICK |
| AFS | ACCESS FLOOR SYSTEM | FC | FIBRE CEMENT |
| AL | ALUMINIUM | FCC | FIBRE CEMENT SET CEILING |
| ALC | ALUMINIUM COMPOSITE PANEL CLADDING | FCS | FIBRE CEMENT SOFFIT LINING |
| ALCK | ALUMINIUM CHECKER PLATE | FCL | FINISH CEILING LEVEL |
| ALP | ALUMINIUM LOUVRES POWDERCOAT FINISH | FE | FIRE EXTINGUISHER |
| ALPT | ALUMINIUM PELMET | FFL | FLOOR FINISH LEVEL |
| ALS | ALUMINIUM SILL | FG | FIXED GLAZING |
| ANO | ANODISED | FH | FIRE HYDRANT |
| AP | ACCESS PANEL | FH-D | FIRE HYDRAN- DOUBLE |
| ASPH | ASPHALT | FHR | FIRE HOSE REEL |
| AT | SUSPENDED ACOUSTIC TILE CEILING IN EXPOSED PREFINISHED GRID | FH/FHR | FIRE HYDRANT & HOSE REEL |
| | | FIP | FIRE INDICATOR PANEL |
| AW | STEEL FRAMED AWNING WITH GLAZED PANELS | FNC | FINCE |
| | | FP | FIXED PANEL |
| | | FRS | FIRE RATED STRUCTURE |
| | | FW | FLOOR WASTE |
| | | | |
| | | G | GLASS |
| BAL | BALUSTRADE | GB | GLASS BALUSTRADE |
| B | FIXED BOLLARD | GD | GRATED DRAIN |
| B-R | BOLLARD REMOVABLE | GTD | GRATED TRENCH DRAIN |
| BCS | BABY CHANGE STATION | GLY | GULLY |
| BH | BULKHEAD | GMS | GALVANISED MILD STEEL |
| BIT | BITUMEN | GR | GUARD RAIL |
| BLK | BLOCKWORK | GRB | GRAB RAIL TO AS1429.1 |
| BLK-EX | BLOCKWORK-EXISTING | GRANO | GRANOLITHIC |
| BLKC | BLOCKWORK-CONCRETE | GS | GLASS SOLAR PERFORMANCE CLEAR |
| BLKC-EX | BLOCKWORK-CONCRETE-EXISTING | GST | GLASS SOLAR PERFORMANCE TINTED |
| BLK-SF | BLOCKWORK SPLIT FACE | GSTH | GLASS SOLAR PERFORMANCE TINTED HEAT STRENGTHENED |
| BMT | BASE METAL THICKNESS | | |
| B.O. | BOTTOM OF | HOB | HOB |
| BSN | WASH HAND BASIN | HR | HANDRAIL |
| BWK | BRICKWORK | HT | HOSE TAP |
| BWK-EX | BRICKWORK-EXISTING | HD | HAND DRYER |
| BWU | BOILING WATER UNIT | HWU | HOT WATER UNIT |
| BG-SS | BOX GUTTER-STAINLESS STEEL | HWC | HOT WATER /CHILLED WATER UNIT |
| BG-Z | BOX GUTTER-ZINCALUME | | |
| BR | BUMP RAILING | INS | INSULATION |
| | | | |
| | | K | KERB |
| C-AT | SUSPENDED EXPOSED GRID ACOUSTIC TILE CEILING | K-EX | KERB-EXISTING |
| C-CP | COMPOSITE PANEL CEILING | KIP | KERB INLET PIT-NEW |
| C-CFC | COMPRESSED FIBRE CEMENT CEILING | KG | KERB & CONCRETE GUTTER |
| C-VT | SUSPENDED EXPOSED GRID VINYL FACED TILE CEILING | KTD | KITCHEN TOWEL DISPENSER |
| C-PB | SET PLASTERBOARD CEILING | KP | KICKPLATE |
| C-FC | FIBRE CEMENT CEILING | | |
| C-FR1 | 1 HR FIRE RATED FYRECHECK CEILING | L | LAMINATE FINISH |
| C-FR2 | 2 HR FIRE RATED FYRECHECK CEILING | LP | LIGHT POLE |
| C-MWC | METAL WALL CALDDING TO CEILING | LINO | LINOLEUM FLOORING |
| C-VB | VILLBOARD CEILING | | |
| CB | CRASH BARRIER | M | MELAMINE FINISH |
| CB-R | CRASH BARRIER - REMOVABLE | MAF | METAL APRON FLASHING |
| CFC | COMPRESSED FIBRE CEMENT SHEETING | MAT | FULLY RECESSED DOOR MAT AS SPECIFIED |
| CG | CORNER GUARD | MBG | METAL BARGE CAPPING |
| CH | COAT HOOK | MDR | METAL DECK ROOFING-PREFINISHED |
| CJ | CONTROL JOINT | MR | MIRROR |
| COL-C | COLUMN-CONCRETE TO STRUCT. ENG. DETAILS | MRC | METAL RIDGE CAPPING- PREFINISHED |
| COL-S | COLUMN-STEEL TO STRUCT. ENG. DETAILS | MRF | MECHANICAL ROOF FAN |
| CONC | CONCRETE | MS | METAL SCREEN |
| CONC-AF | CONCRETE-AGGREGATE FINISH | MSB | MECHANICAL SWITCH BOARD |
| CONC-BF | CONCRETE-BROOM FINISH | MSH | MESH SCREEN |
| CONC-CV | CONCRETE-COVE FINISH | MW | MICROWAVE OVEN |
| CONC-EX | CONCRETE-EXISTING | MWC | METAL WALL CLADDING-PREFINISHED |
| CONC-OF | CONCRETE-OFF FORM FINISH | | |
| CONC-RE | CONCRETE-REMOVED | NAL | NATURAL ANODISED ALUMINIUM |
| CONC-POL | CONCRETE-POLISHED | OF | OVERFLOW |
| CONC-SC | CONCRETE-SEALED CONCRETE | OP | OPERABLE WALL |
| CONC-ST | CONCRETE-STEEL TROWELLED FINISH | | |
| CONC-WF | CONCRETE-WOOD AFLOAT | P | PUMP ROOM |
| CPT | CARPET | PB | PLASTERBOARD |
| CPD | CUPBOARD | PBF | PARTICLE BOARD FLOORING |
| CR | CEMENT RENDER | PBMR | MOISTURE RESISTANT PLASTERBOARD |
| CRAL | CAGED ROOF ACCES LADDER TO MANUFACTURER DETAILS | PBS | SUSPENDED SET PLASTERBOARD CEILING |
| CTX | CERAMIC TILE TYPEX | PC | POWDERCOAT FINISH |
| CS | CLEANER'S SINK | PCP | PRECAST CONCRETE PANELS TO ENG. DETAILS |
| CSS | COMPRESSED FIBRE CEMENT SUSPENDED CEILING | PD | PLANTER DRAIN |
| CWM | CHAIN WIRE MESH | PF | PAINT FINISH |
| | | PJ | PANEL JOINT |
| | | PLF | PLATFORM FLOOR |
| DB | DISTRIBUTION BOARD | POLY | POLYURETHANE FINISH |
| DD | DISH DRAIN | PO-SW | PUMP-OUT - STORMWATER (REF HYD. ENG. DETAILS) |
| DVM | DRINK VENDING MACHINE | PO-W | PUMP-OUT - WASTE (REF HYD. ENG. DETAILS) |
| DF | DRINKING FOUNTAIN | PP | POWER POLE |
| DG | DOUBLE GLAZING | PP-EX | POWER POLE EXISTING |
| DL | DOCK LEVELLER | PSP | POLYSTYRENE PANEL - FINISH |
| DP | DOWPIPE | PT | PARTITION |
| DPC | DAMP PROOF COURSE | PTDSP | PAPER TOWEL DISPENSER |
| DPM | DAMP PROOF MEMBRANE | PV | PAVING |
| DRG | DOOR GRILLE | PRC | PAVING - REINFORCED CONCRETE PAVER |
| DRO | DRAINAGE OUTLET | | |
| DS | DIVIDING STRIP-METAL | | |
| DS-HD | DIVIDING STRIP-METAL-HEAVY DUTY | | |
| | | | |
| E | ELECTRIC SUBSTATION | | |
| EDB | ELECTRIC DISTRIBUTION BOARD | | |
| EFB | ELECTRICAL FLOOR BOX | | |
| EFF | EPOXY FLOOR FINISH | | |
| EG | EAVES GUTTER | | |
| EJ | EXPANSION JOINT | | |
| EP | EPOXY WALL PAINT | | |
| ES | EXPANSION STRIP | | |

| | |
|--------|---|
| QT | QUARRY TILE |
| | |
| RAL | ROOF ACCESS LADDER TO MANUFACTURERS DETAILS |
| RB | ROOF BRACING |
| RC | REINFORCED CONCRETE |
| RCF | REINFORCED CONCRETE FOOTING |
| RCS | REINFORCED CONCRETE SLAB |
| REF | REFRIGERATOR (BY OTHERS) |
| RF | RENDER FINISH |
| RL | RELATIVE LEVEL |
| RS | ROLLER SHUTTER- PREFINISHED METAL |
| RV | ROOF VENTILATOR |
| RW | RETAINING WALL |
| RWH | RAIN WATER HEAD |
| RWT | RAIN WATER TANK |
| | |
| S | SINK |
| SB | SHOWER BASE |
| SDSP | SOAP DISPENSER |
| SF | STEEL FRAMING |
| SH | SOAP HOLDER |
| SHR-A | SHOWER - ACCESSIBLE |
| SHR-CR | SHOWER-CURTAIN RAIL |
| SHR-H | SHOWER HEAD |
| SHR-M | SHOWER MIXER TAP |
| SJ | SILICONE JOINT |
| SM | SHOWER MIXER |
| SK-MDF | SKIRTING-MDF |
| SK-V | SKIRTING-VINYL |
| SMH | SEWER MAN HOLE |
| SS | STAINLESS STEEL |
| SSH | SAFETY SHOWER |
| SWP | STORM WATER PIT |
| SWS | STORM WATER SUMP |
| | |
| TCRT | TERRACOTTA ROOF TILE |
| TCT | TERRACOTTA TILE |
| TB | TIMBER FLOORING |
| TFS | TUNDISH |
| TI | TERRACOTTA FACADE SYSTEM |
| TI | TACTILE INDICATOR |
| TRH | TOILET ROLL HOLDER |
| TD | TUNDISH |
| TRS | TRANSLUCENT ROOF SHEETING |
| T.O. | TOP OF |
| TS | TIMBER SCREEN |
| TWS | TRANSLUCENT WALL SHEETING |
| TWV | TRADE WASTE VENT |
| | |
| UL-R | UPLIGHT-RECESSED INTO FLOOR |
| UL-W | UPLIGHT-WALL MOUNTED |
| UR | URINAL |
| US | UNDERSIDE |
| | |
| V | VINYL |
| VB | VANITY BASIN |
| VC | VINYL COVERING |
| VHB | VEHICLE HEIGHT BAR |
| VIS | VISION PANEL |
| VP | VENT PIPE |
| VS | VINYL SHEET FLOORING |
| VT | VITRIFIED TILE FLOORING |
| | |
| WA | AMENITIES WALL TYPE |
| WB | WALL BRACING |
| WC | WATER CLOSET |
| WCP | WALL COMPOSITE PANEL |
| WPM | WATER PROOF MEMBRANE |
| WP | PARTITION WALL TYPE |
| WRC | WESTERN RED CEDAR |
| WROBE | WARDROBE |
| WS | WHEEL STOP AS SPECIFIED |
| WT | WALL TILE |
| WTR | WASH THROUGH |
| WX | EXTERNAL WALL TYPE |

GENERAL NOTES

FOR HINGE LOCATIONS REFER TO ARCHITECTURAL FLOOR PLANS

CONFIRM OPENINGS ON SITE PRIOR TO FABRICATION.

DOOR SWINGS ARE INDICATIVE - REFER PLANS FOR HANDING.

REFER SEPARATE SCHEDULE FOR DOOR HANDLES, LOCKING, ETC.

ALL GLAZING TO COMPLY WITH THE REQUIREMENTS OF AS 1288 & SECTION J OF THE BCA

ALL FRAMING IS TO COMPLY WITH THE REQUIREMENTS OF AS 2047 VISION PANEL IN ALL INTERNAL DOORS - FG / GL3

KEY TYPE

| | |
|-------|---|
| AH-FR | PROPRIETRY FIRE RATED ACCESS HATCH (FRL:120/120/120). |
| PT | PROPRIETRY GLAZED ALUMINIUM BIFOLD DOOR SYSTEM. |
| CWG | PVC COATED CHAINWIRE GATE WITH 3 ROWS OF BARBED WIRE OVER |
| FR1 | SOLID CORE DOOR - 40mm THICK (FRL : -/60/30) |
| FR2 | SOLID CORE DOOR - 40mm THICK (FRL : -/120/120) |
| FR3 | SOLID CORE DOOR - 40mm THICK (FRL : -/60/60/-) |
| FR4 | DOOR MADE OF 45mm THICK HARDWOOD, CLAD ON BOTH FACES BY 3MM THICK LOW - CARBON STEEL SHEET. (FRL : -/60/60/-) |
| G-AL | GLAZED ALUMINIUM FRAMED DOOR. |
| L | ALUMINIUM LOUVRE DOOR. |
| PG | 2.1m HIGH PALISADE GATE. BLACK POWDERCOAT FINISH |
| RR | RAPID ROLL |
| RS | STEEL ROLLER SHUTTER |
| RS-AL | ALUMINIUM ROLLER SHUTTER |
| SC1 | SOLID CORE DOOR - 35mm THICK |
| SC2 | SOLID CORE DOOR - 40mm THICK |
| SC3 | SOLID CORE DOOR - 50mm THICK - ACOUSTIC Rw35 |
| SG | BLACK POWDERCOATED AUTOMATED SLIDING GATE. STEEL PICKETS WITH SECURITY SPIKE TO TOP RAIL. CANTILEVER TYPE (NO TRACKS), HIGH SPEED |
| SFD | SLIDING FIRE DOOR 80mm THICK SOLID DOOR (FRL: -/120/120) |
| FR5 | SOLID CORE DOOR - 50mm THICK - (FRL: -/240/60) |

FINISH

| | |
|-------|---|
| AN | ANODIZED ALUMINIUM |
| GAL | GALVANIZED |
| MC | METAL CLADDING TO BOTH SIDES (U.N.O.) |
| PC | POWDERCOAT |
| PF | PAINT FINISH |
| GLASS | (REFER FINISHES LEGEND FOR GLAZING DETAILS) |

FRAME TYPE

| | |
|-------|--------------------------------------|
| AL | ALUMINIUM |
| S1 | STEEL - SITE FIXED |
| S2 | STEEL - CAST INTO PRECAST PANEL |
| S-FR1 | STEEL - FIRE RATED (FRL : -/60/30) |
| S-FR2 | STEEL - FIRE RATED (FRL : -/120/30) |
| S-FR3 | STEEL - FIRE RATED (FRL : -/60/60/-) |
| S-FR4 | STEEL - FIRE RATED (FRL : -/240/60) |

ACCESSORIES

| | |
|-------|--|
| AC | ACOUSTIC SEALS - REFER ACOUSTIC REPORT FOR DETAILS |
| BS | BRUSH SEALS REQUIRED TO BOTH SIDES OF DOOR |
| GR-AL | ALUMINIUM LOUVRE GRILLE (FIXED) |
| K1 | 150mm HIGH x 1.6mm STAINLESS STEEL KICKPLATE WITH ROLLED EDGES SCREW FIXED TO FULL WIDTH & BOTH SIDES OF DOOR. |
| K2 | 1200mm x 1.6mm STAINLESS STEEL PROTECTION PLATE WITH ROLLED EDGES SCREW FIXED TO FULL WIDTH & BOTH SIDES OF DOOR. |
| P1 | PICTOGRAM AS NOTED. TO INCLUDE BRAILLE TEXT TO COMPLY WITH STATUTORY REGULATIONS. SIGNS AVAILABLE FORM 'SEFTON SIGNS.' |
| PP1 | 150x150mm x1.6mm STAINLESS STEEL PUSHPLATE SCREW FIXED TO DOOR WITH SS PULL HANDLE ON REVERSE SIDE. |
| RMS | REBATED MEETING STYLES. |
| SDC | SAFETY DECALS ON GLASS TO AS 1428.1 - FINAL LOGO DETAILS TO BE ADVISED. |
| SS | SMOKE SEALS |
| VIS | VISION PANEL |

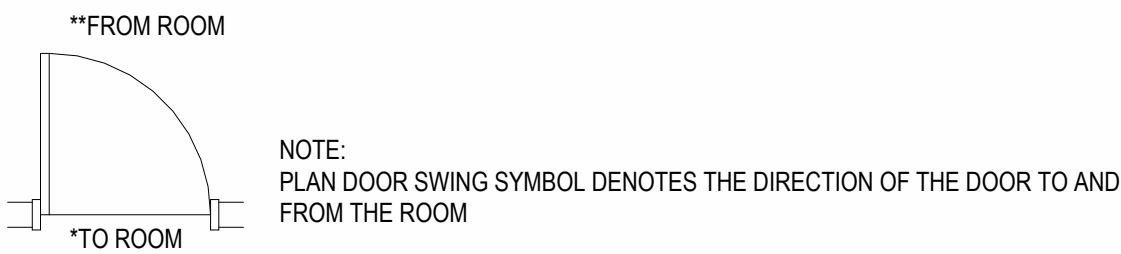
HARDWARE

| | |
|-----|--|
| CL1 | SURFACE MOUNTED DOOR CLOSER/S. |
| CL2 | SURFACE MOUNTED CO-ORDINATED CLOSERS. |
| CL3 | TRANSOME CONCEALED CLOSER/S (NARROW PROFILE) |
| H1 | PIVOT HINGES |
| H2 | 180° THROW HINGE |

SEALS

| | |
|-------|--|
| AC | ACOUSTIC SEALS - REFER ACOUSTIC REPORT FOR DETAILS |
| BS | BRUSH SEALS REQUIRED TO BOTH SIDES OF DOOR |
| GR-AL | ALUMINIUM LOUVRE GRILLE (FIXED) |
| PS | PRESSURE DOOR SEAL RAVEN UNDER DOOR |
| RS | ACOUSTIC RUBBER SEALS |
| SS | SMOKE SEALS |

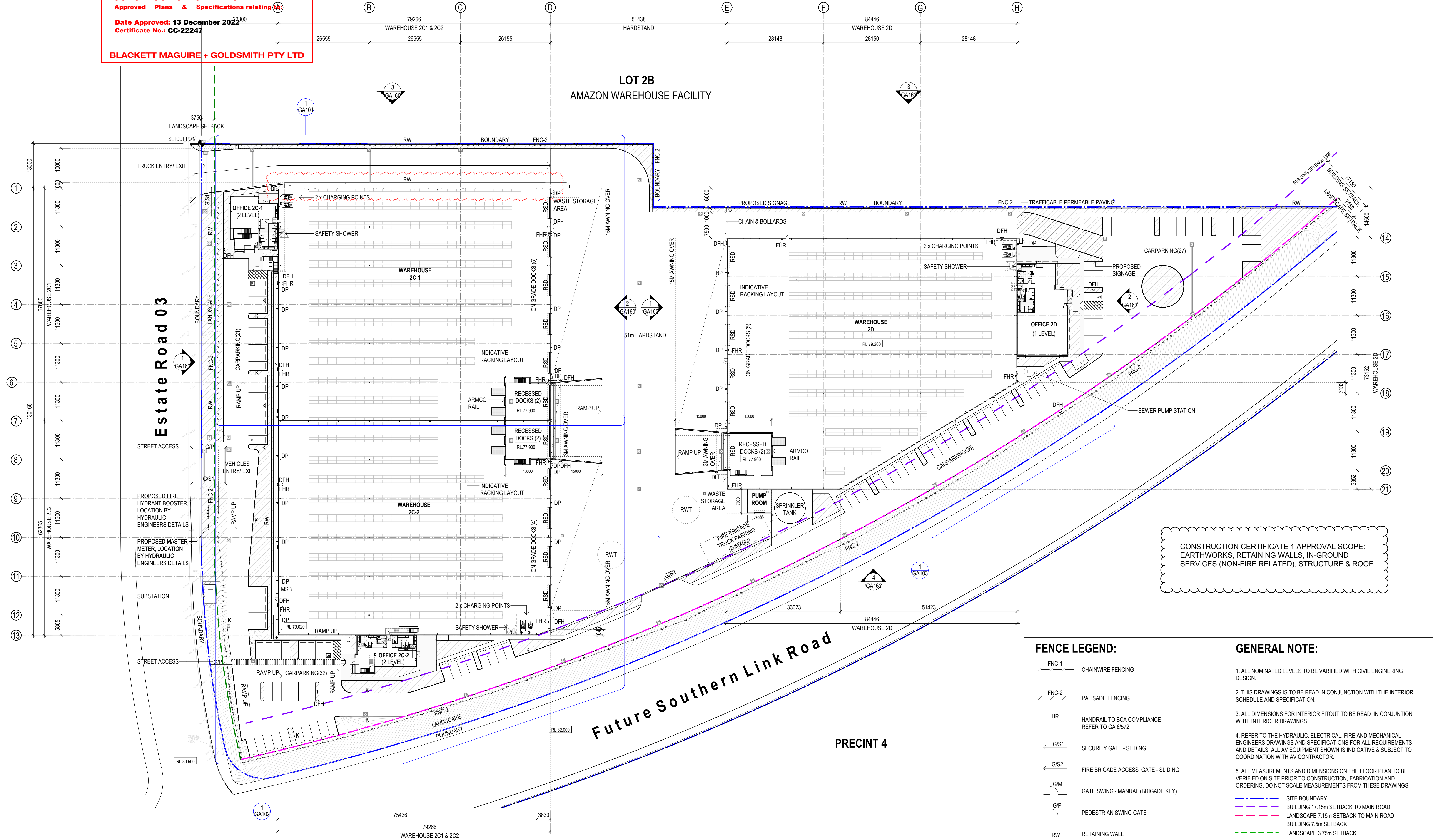
DOOR LOCATION



CONSTRUCTION CERTIFICATE 1 APPROVAL SCOPE:
EARTHWORKS, RETAINING WALLS, IN-GROUND SERVICES (NON-FIRE RELATED), STRUCTURE & ROOF

FOR CC

CONSTRUCTION CERTIFICATE
Approved Plans & Specifications relating to
Date Approved: 13 December 2022
Certificate No.: CC-22247
BLACKETT MAGUIRE + GOLDSMITH PTY LTD

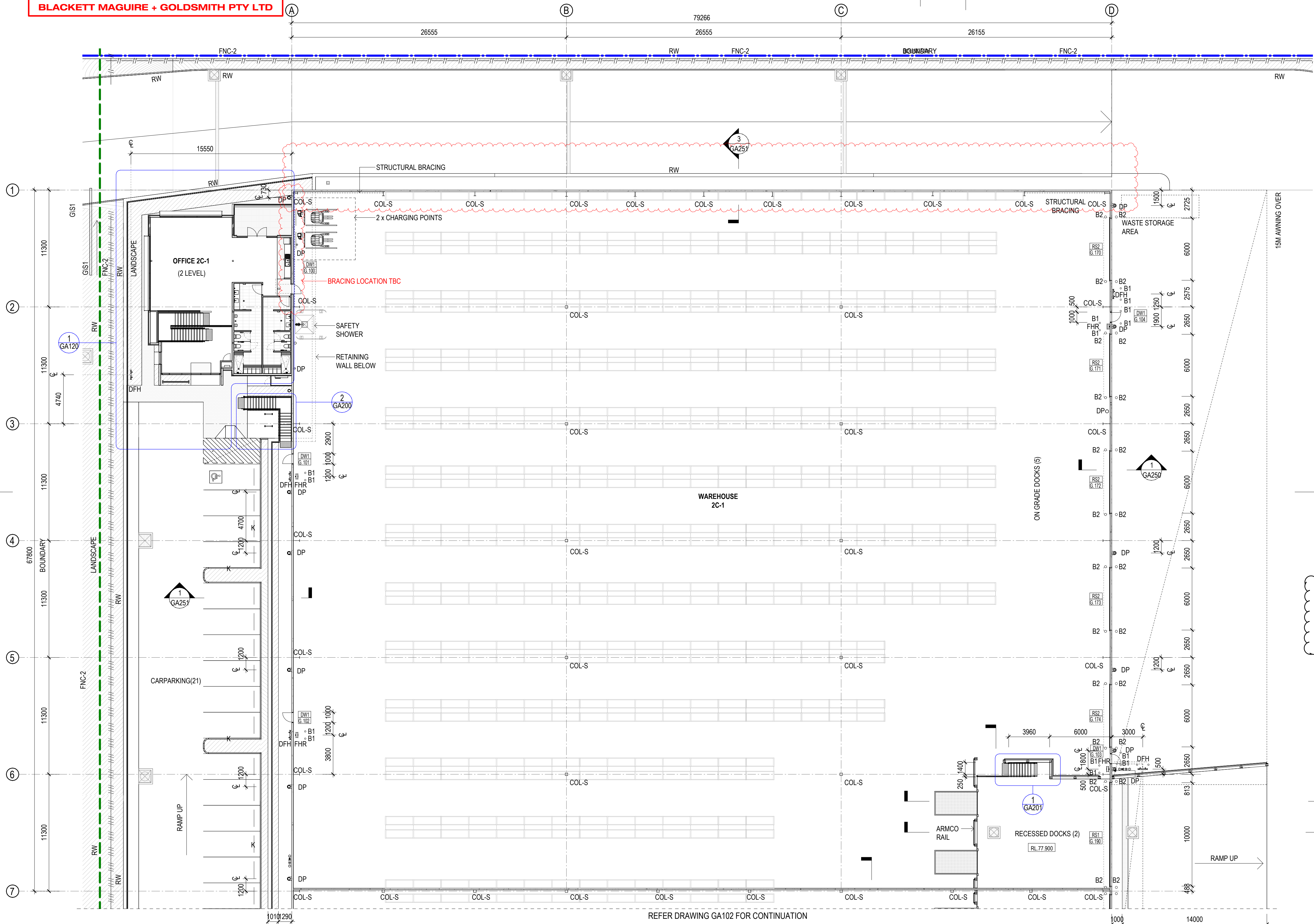


FOR CC

CONSTRUCTION CERTIFICATE
Approved Plans & Specifications relating to:

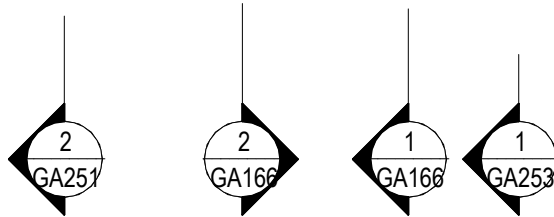
Date Approved: 13 December 2022
Certificate No.: CC-22247

BLACKETT MAGUIRE + GOLDSMITH PTY LTD



CONSTRUCTION CERTIFICATE 1 APPROVAL SCOPE:
EARTHWORKS, RETAINING WALLS, IN-GROUND
SERVICES (NON-FIRE RELATED), STRUCTURE & ROOF

REFER DRAWING GA102 FOR CONTINUATION



FOR CC

SBA
ARCHITECTS

E FOR CC
D FOR CC
C ISSUE FOR INFORMATION
B PRELIMINARY ISSUE
A PRELIMINARY ISSUE
DESCRIPTION

08/12/2022
28/11/2022
04/11/2022
17/10/2022
30/09/2022
DATE

THESE DESIGNS, PLANS & SPECIFICATIONS AND THE
COPYRIGHT THEREIN ARE THE PROPERTY OF THE
ARCHITECT AND MUST NOT BE USED, REPRODUCED OR
COPIED IN ANY MANNER WITHOUT THE WRITTEN
PERMISSION OF THIS OFFICE.
FIGURED DIMENSIONS TO BE USED IN PREFERENCE
TO SCALING. ALL DIMENSIONS TO BE CHECKED
ON SITE.
THIS DOCUMENT NOT TO BE USED FOR
CONSTRUCTION UNLESS SIGNED & ISSUED FOR
CONSTRUCTION.

CLIENT



BUILDER

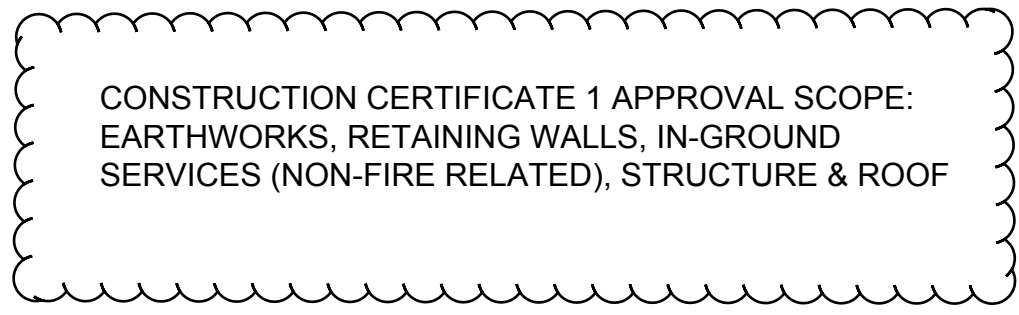


OAKDALE WEST 2C&2D
Kempes Creek, NSW
TITLE
WAREHOUSE PLAN 2C1

DATE 08/12/2022
SCALE 1:200 @ A1
DRAWN VV
CHECKED VV
APPROVED TS

PROJECT NO.
22228
DWG NO.
GA101
REVISION
E

9/12/2022 3:50:15 PM



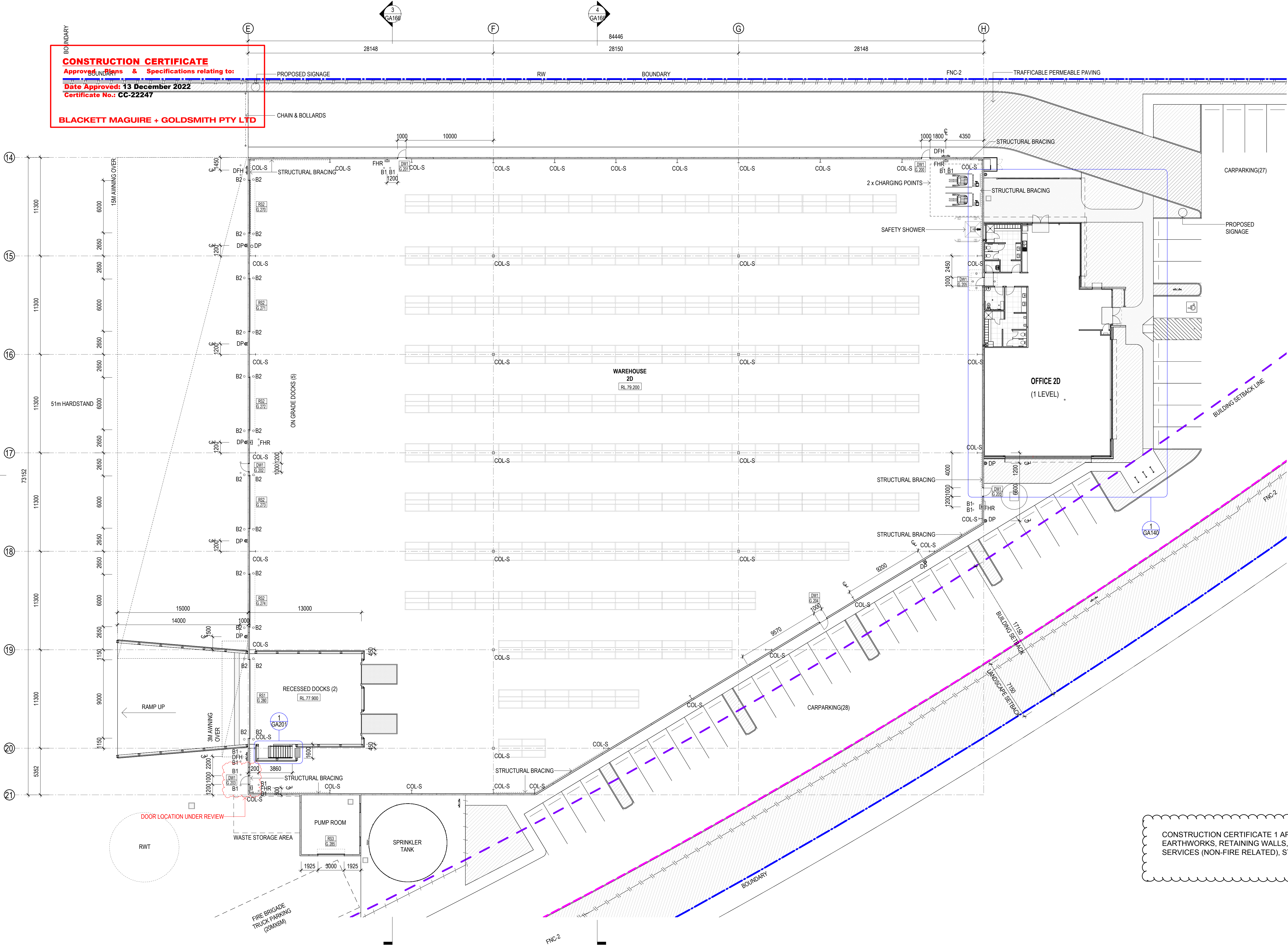
PROJECT NO.
22228

DWG NO. GA102

REVISION E

CONSTRUCTION CERTIFICATE
Approved Plans & Specifications relating to:
Date Approved: 13 December 2022
Certificate No.: CC-22247

BLACKETT MAGUIRE + GOLDSMITH PTY LTD



CONSTRUCTION CERTIFICATE 1 APPROVAL SCOPE:
EARTHWORKS, RETAINING WALLS, IN-GROUND
SERVICES (NON-FIRE RELATED), STRUCTURE & ROOF

FOR CC

SBA
ARCHITECTS

C FOR CC
B PRELIMINARY ISSUE
A PRELIMINARY ISSUE
DESCRIPTION

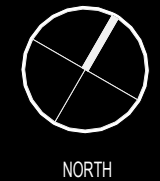
28/11/2022
17/10/2022
30/09/2022
DATE

THESE DESIGNS, PLANS & SPECIFICATIONS AND THE
COPYRIGHT THEREIN ARE THE PROPERTY OF THE
ARCHITECT AND MUST NOT BE USED, REPRODUCED OR
COPIED IN WHOLE OR IN PART WITHOUT THE WRITTEN
PERMISSION OF THIS OFFICE.
FIGURED DIMENSIONS TO BE USED IN PREFERENCE
TO SCALING. ALL DIMENSIONS TO BE CHECKED
ON-SITE.
THIS DOCUMENT NOT TO BE USED FOR
CONSTRUCTION UNLESS SIGNED & ISSUED FOR
CONSTRUCTION.

CLIENT



BUILDER



OAKDALE WEST 2C&2D
Kemp Creek, NSW
TITLE
WAREHOUSE PLAN 2D

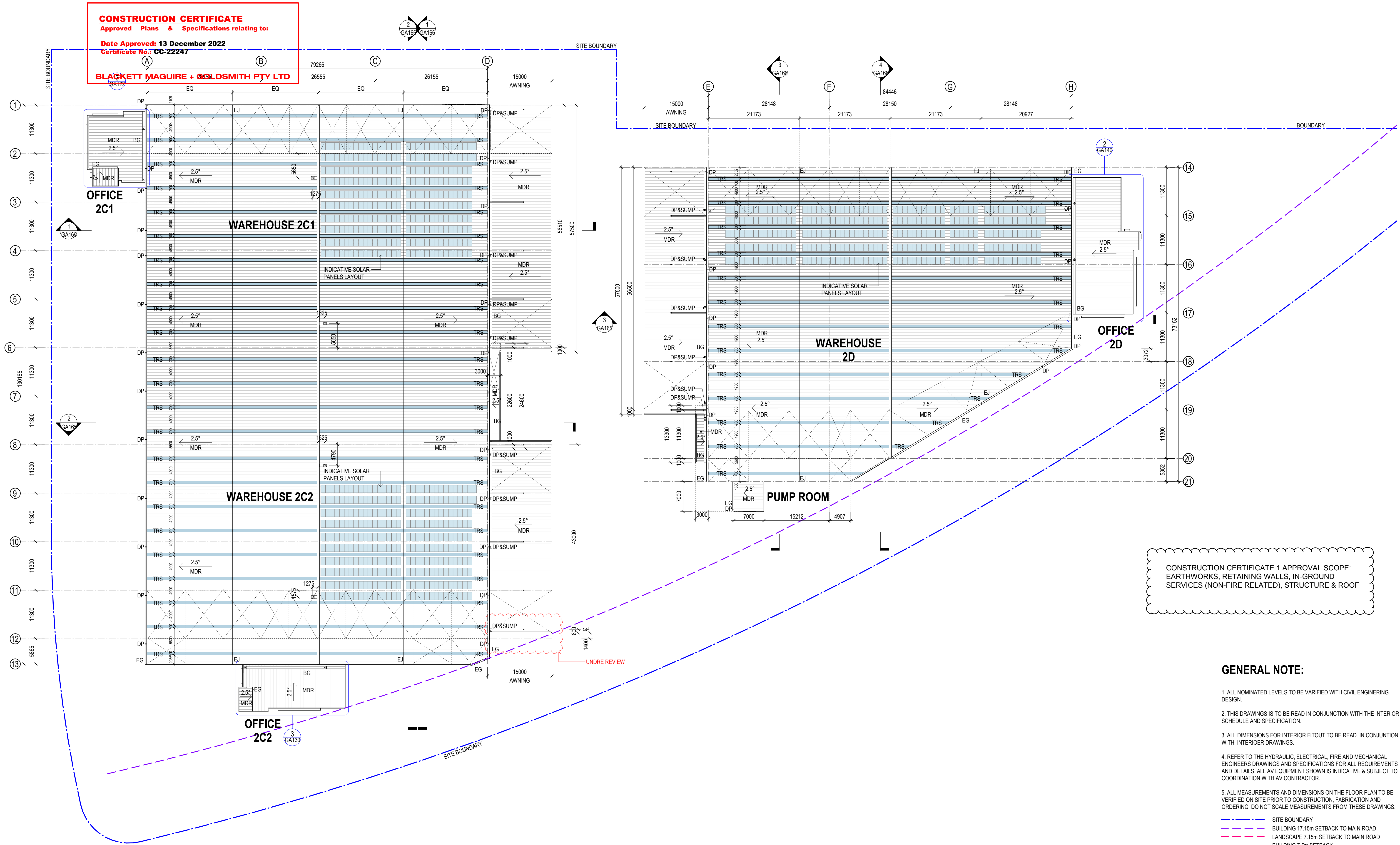
DATE 28/11/2022
SCALE 1:200 @ A1
DRAWN VV
CHECKED VV
APPROVED TS

PROJECT NO.
22228
DWG NO.
GA103
REVISION
C

28/11/2022 11:08:05 PM

CONSTRUCTION CERTIFICATE
Approved Plans & Specifications relating to:
Date Approved: 13 December 2022
Certificate No.: CC-22247

BLACKETT MAGUIRE + GOLDSMITH PTY LTD



CONSTRUCTION CERTIFICATE 1 APPROVAL SCOPE:
EARTHWORKS, RETAINING WALLS, IN-GROUND
SERVICES (NON-FIRE RELATED), STRUCTURE & ROOF

GENERAL NOTE:

1. ALL NOMINATED LEVELS TO BE VARIFIED WITH CIVIL ENGINEERING DESIGN.
2. THIS DRAWINGS IS TO BE READ IN CONJUNCTION WITH THE INTERIOR SCHEDULE AND SPECIFICATION.
3. ALL DIMENSIONS FOR INTERIOR FITOUT TO BE READ IN CONJUNCTION WITH INTERIOER DRAWINGS.
4. REFER TO THE HYDRAULIC, ELECTRICAL, FIRE AND MECHANICAL ENGINEERS DRAWINGS AND SPECIFICATIONS FOR ALL REQUIREMENTS AND DETAILS. ALL AV EQUIPMENT SHOWN IS INDICATIVE & SUBJECT TO COORDINATION WITH AV CONTRACTOR.
5. ALL MEASUREMENTS AND DIMENSIONS ON THE FLOOR PLAN TO BE VERIFIED ON SITE PRIOR TO CONSTRUCTION, FABRICATION AND ORDERING. DO NOT SCALE MEASUREMENTS FROM THESE DRAWINGS.

- SITE BOUNDARY
- BUILDING 17.15m SETBACK TO MAIN ROAD
- LANDSCAPE 7.15m SETBACK TO MAIN ROAD
- BUILDING 7.5m SETBACK
- LANDSCAPE 3.75m SETBACK

FOR CC



E FOR CC
D ISSUE FOR INFORMATION
C FOR CC
B PRELIMINARY ISSUE
A PRELIMINARY ISSUE
DESCRIPTION

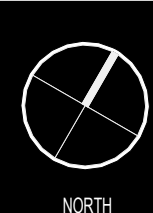
09/12/2022
09/12/2022
28/11/2022
17/10/2022
30/09/2022
DATE

THESE DESIGNS, PLANS & SPECIFICATIONS AND THE COPYRIGHT THEREIN ARE THE PROPERTY OF THE ARCHITECT AND MUST NOT BE USED, REPRODUCED OR COPIED IN ANY FORM OR BY ANY MEANS WITHOUT THE WRITTEN PERMISSION OF THIS OFFICE.
FIGURED DIMENSIONS TO BE USED IN PREFERENCE TO SCALING. ALL DIMENSIONS TO BE CHECKED ON SITE.
THIS DOCUMENT NOT TO BE USED FOR CONSTRUCTION UNLESS SIGNED & ISSUED FOR CONSTRUCTION.

CLIENT



BUILDER

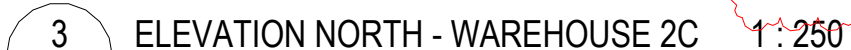


OAKDALE WEST 2C&2D
Kempes Creek, NSW
TITLE
ROOF PLAN

DATE 09/12/2022
SCALE 1:400 @ A1
DRAWN VV
CHECKED VV
APPROVED TS

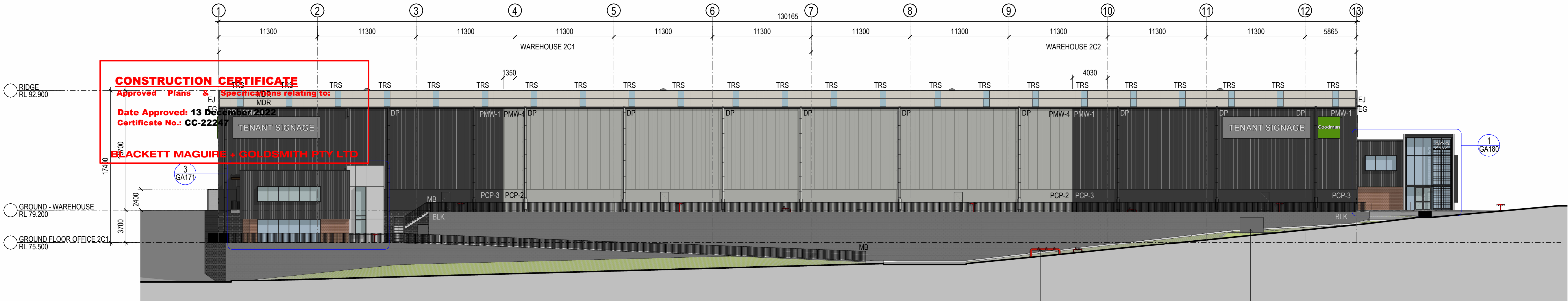
PROJECT NO. 22228
DWG NO. GA115
REVISION E

9/12/2022 3:44:36 PM

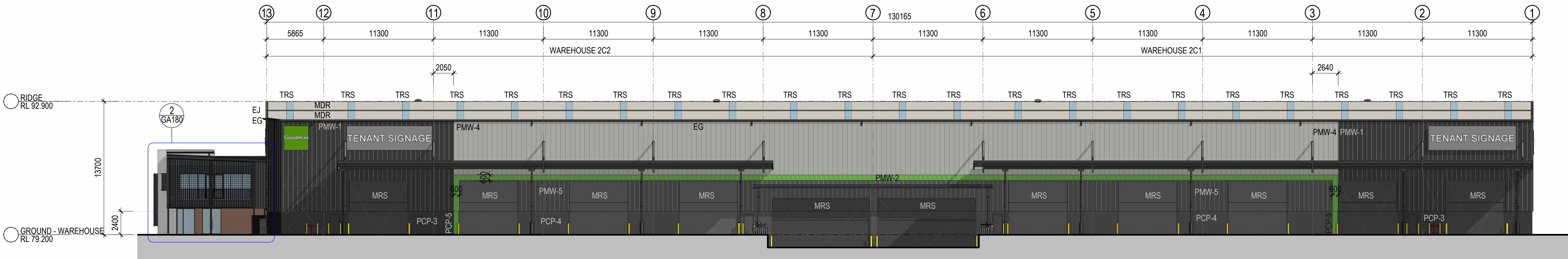


EXTERNAL FINISHES SCHEDULE

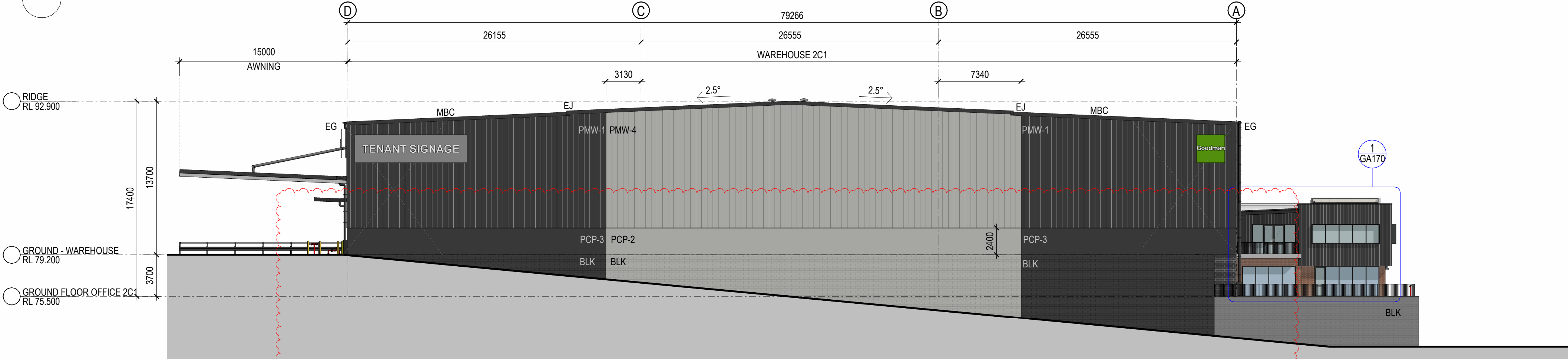
FOR CC



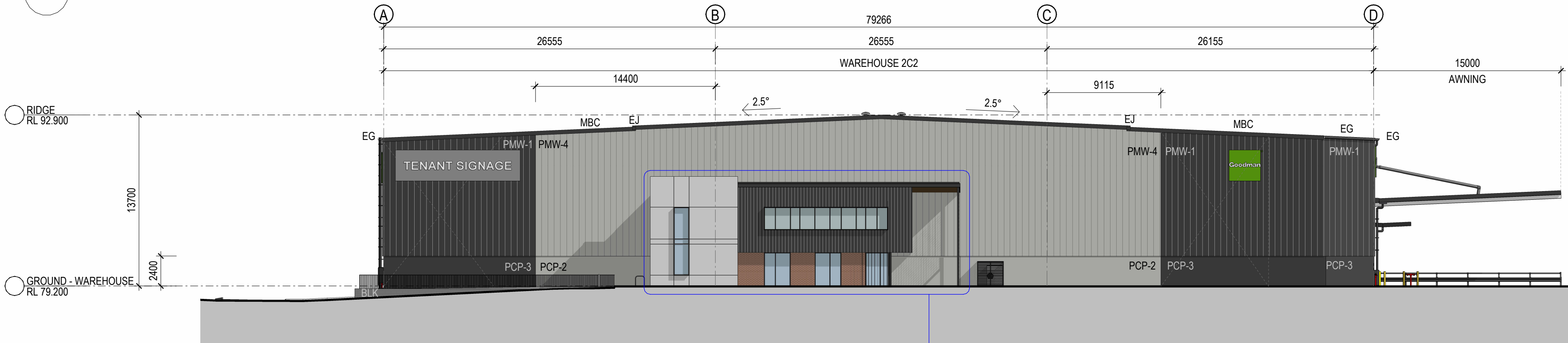
1 ELEVATION WEST - WAREHOUSE 2C 1 : 250



2 ELEVATION EAST - WAREHOUSE 2C 1 : 250



3 ELEVATION NORTH - WAREHOUSE 2C 1 : 250



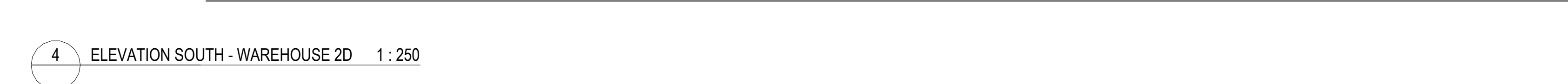
4 ELEVATION SOUTH - WAREHOUSE 2C 1 : 250

CONSTRUCTION CERTIFICATE 1 APPROVAL SCOPE:
EARTHWORKS, RETAINING WALLS, IN-GROUND
SERVICES (NON-FIRE RELATED), STRUCTURE & ROOF

INDICATIVE EXTERNAL FINISHES LEGEND

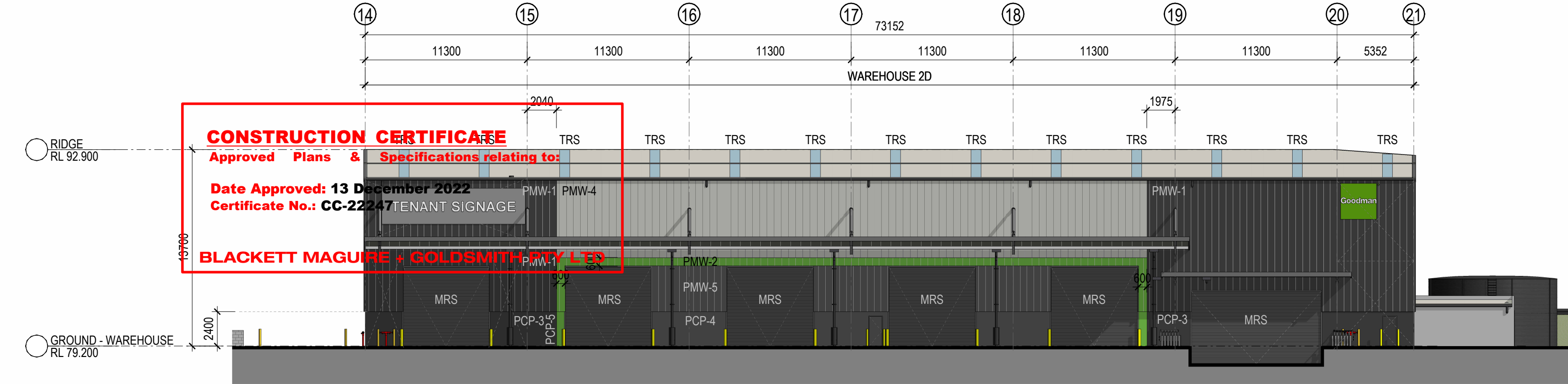
| | | |
|---|--|---|
| BLK KEYSTONE BLOCKWORK - CHARCOAL | ES OFFICE EXPOSED STEEL & OFFICE ENTRY AWNING - MONUMENT | GL-1 CLEAR GLAZING - LIGHT GREY TINT OR SIMILAR |
| MDR METAL DECK ROOFING COLORBOND - SURFMIST | MRS ROLLER SHUTTER DOORS - COLOUR TO MATCH BACKGROUND CLADDING COLOUR | MESH STEEL PAINT FINISH: 3 COAT EPOXY SYSTEM (1 PRIMER COAT & 2 PART EPOXY FINISH COAT) - MONUMENT |
| PCP-1 PRECAST CONCRETE - ECOTONE | PCP-2 PRECAST CONCRETE PANELS - SHALE GREY | PCP-3 PRECAST CONCRETE PANELS - MONUMENT |
| PCP-4 PRECAST CONCRETE PANELS - BASALT | PCP-5 PRECAST CONCRETE PANELS - GOODMAN GREEN | PMW-1 PREFINISHED METAL WALL CLADDING - MONUMENT |
| PMW-2 PREFINISHED METAL WALL CLADDING - GOODMAN GREEN | PMW-3 FINESSE PROMISEMETAL WALL CLADDING - MONUMENT | PMW-4 PREFINISHED METAL WALL CLADDING - SHALE GREY |
| PMW-5 PREFINISHED METAL WALL CLADDING - BASALT | WH STEEL WINDOW HOOD - MONUMENT | FRM PREFINISHED ALUMINUM - WINDOW FRAME - MONUMENT |
| DP DOWNPIPE COLOUR TO MATCH BACKGROUND CLADDING COLOUR | PAV PAVER, GREY BRICK, HERRINGBONE PATTERN | TMB TIMBER LOOK PANELS, ALUMINUM CLIP ON PANELS, SCULPTFORM |
| SC STEEL CABLE: PAINT FINISH: 3 COAT EPOXY SYSTEM (1 PRIMER COAT & 2 PART EPOXY FINISH COAT) - MONUMENT - WITH CLIMBING PLANTS | SP SOLAR PANELS | MB METAL BALUSTRADE, MONUMENT |
| PL 1m x 1m ABOVE GROUND PLANTER WITH TIMBER TABLE | TRS-1 TRANSLUCENT ROOF SHEET, OPAL COLOUR | BRK BRICKWORK - GERTRUDIS BROWN |

FOR CC

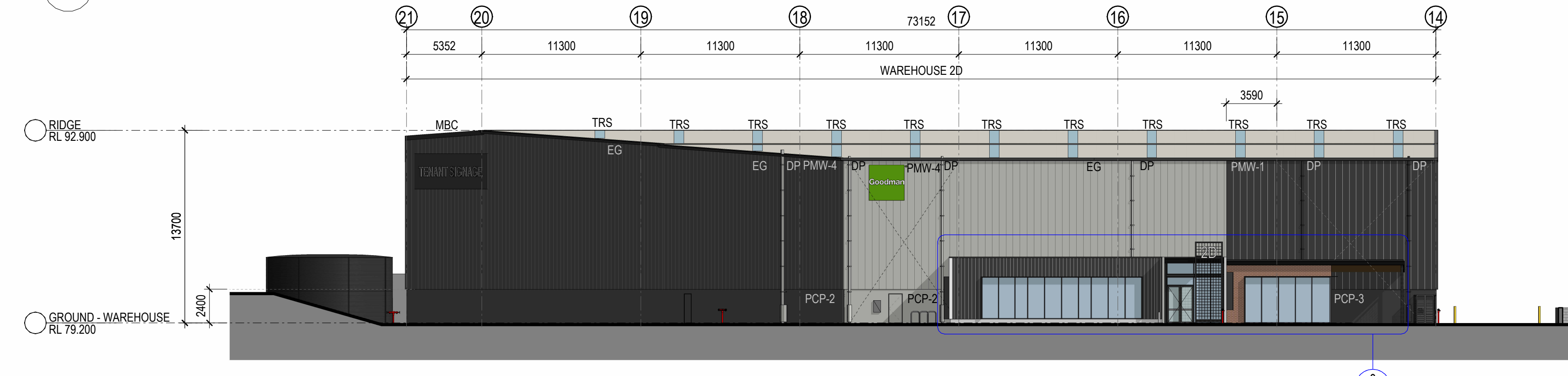


| EXTERNAL FINISHES SCHEDULE | |
|----------------------------|---|
| BLK | KEYSTONE BLOCKWORK - CHARCOAL |
| BRK | BRICKWORK - GERTRUDIS BROWN |
| DP | DOWNPIPE - COLOUR TO MATCH BACKGROUND CLADDING COLOUR |
| ES | OFFICE EXPOSED STEEL & OFFICE ENTRY AWNING - MONUMENT |
| FRM | PREFINISHED ALUMINUM - WINDOW FRAME - MONUMENT |
| GL-1 | CLEAR GLAZING - LIGHT GREY TINT OR SIMILAR |
| MB | METAL BALUSTRADE, MONUMENT |
| MDR | METAL DECK ROOFING - SURFMIST |
| MESH | STEEL MESH, PAINT FINISH: 3 COAT EPOXY SYSTEM (1PRIMER COAT & 2 PART EPOXY FINISH COAT) - MONUMENT |
| MRS | ROLLER SHUTTER DOORS - COLOUR TO MATCH BACKGROUND CLADDING COLOUR |
| PAV | PAVER - GREY BRICK - HERRINGBONE PATTERN |
| PCP-1 | PRECAST CONCRETE PANEL - ECOTONE |
| PCP-2 | PRECAST CONCRETE PANELS - SHALE GREY |
| PCP-3 | PRECAST CONCRETE PANELS - MONUMENT |
| PCP-4 | PRECAST CONCRETE PANELS - BASALT |
| PCP-5 | PRECAST CONCRETE PANELS - GOODMAN GREEN |
| PL | PLANTER WITH TIMBER TABLE |
| PMW-1 | PREFINISHED METAL WALL CLADDING - MONUMENT |
| PMW-2 | PREFINISHED METAL WALL CLADDING - GOODMAN GREEN |
| PMW-3 | FINESSE PROMINESMETAL WALL CLADDING - MONUMENT |
| PMW-4 | PREFINISHED METAL WALL CLADDING - SHALE GREY |
| PMW-5 | PREFINISHED METAL WALL CLADDING - BASALT |
| SC | STEEL CABLE, PAINT FINISH: 3 COAT EPOXY SYSTEM (1PRIMER COAT & 2 PART EPOXY FINISH COAT) - MONUMENT |
| TMB | CEILING - TIMBER LOOK PANELS |
| TRS | TRANSLUCENT ROOF SHEET - OPAL COLOUR |
| WH | STEEL WINDOW HOOD - MONUMENT |

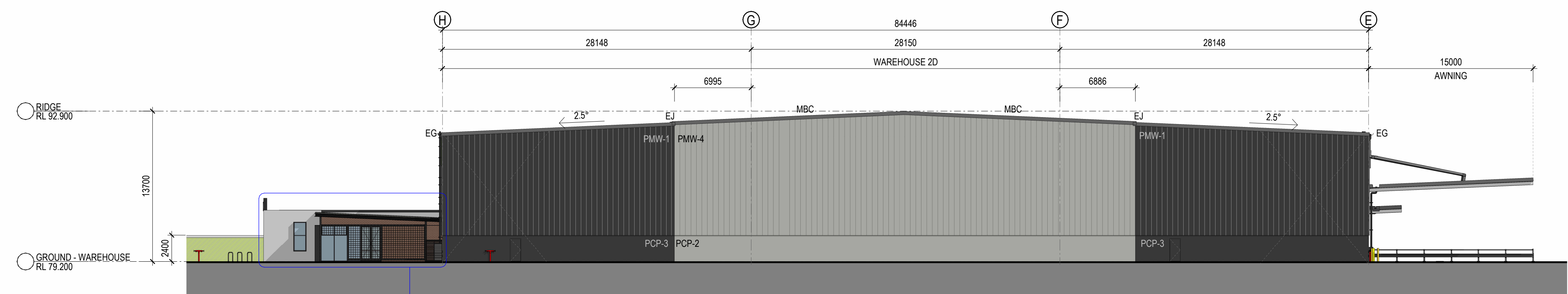
FOR CC



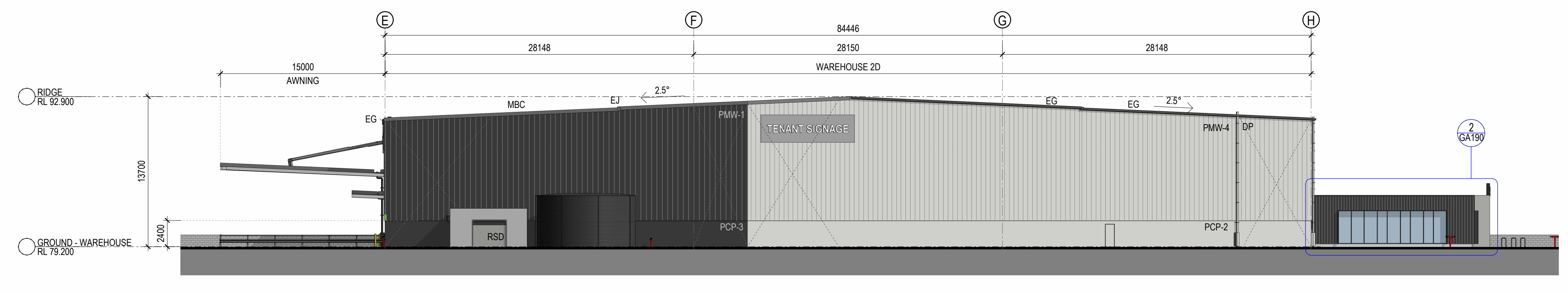
1 ELEVATION WEST - WAREHOUSE 2D 1 : 250



2 ELEVATION EAST - WAREHOUSE 2D 1 : 250



3 ELEVATION NORTH - WAREHOUSE 2D 1 : 250



4 ELEVATION SOUTH - WAREHOUSE 2D 1 : 250

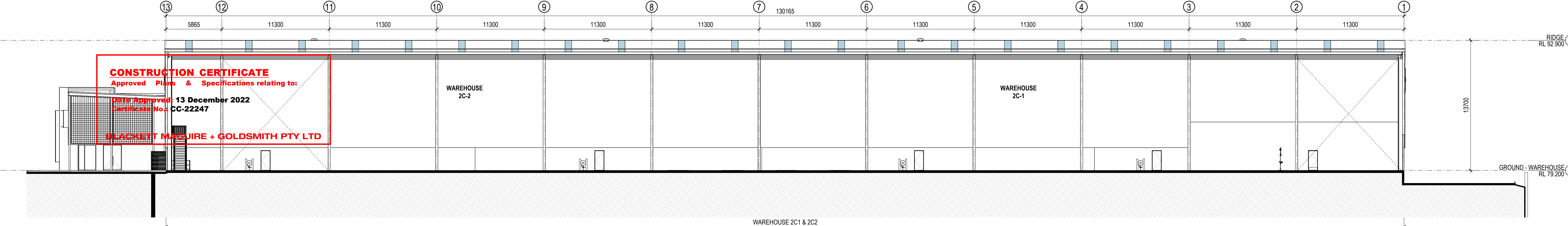
CONSTRUCTION CERTIFICATE 1 APPROVAL SCOPE:
EARTHWORKS, RETAINING WALLS, IN-GROUND
SERVICES (NON-FIRE RELATED), STRUCTURE & ROOF

INDICATIVE EXTERNAL FINISHES LEGEND

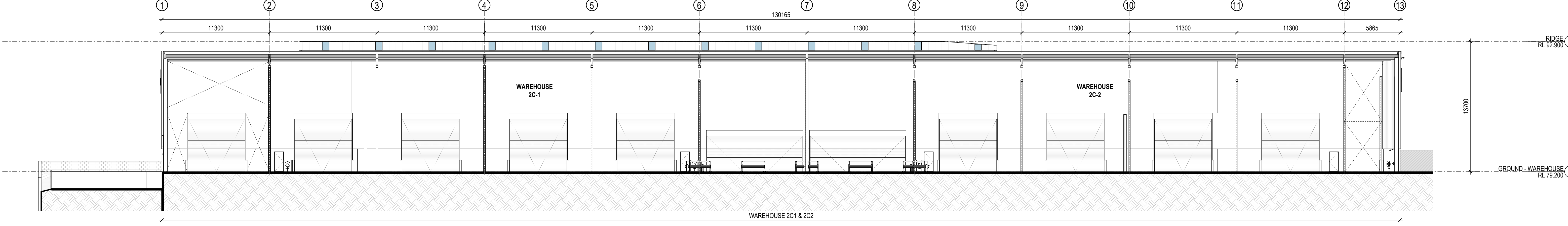
- | | | |
|---|--|---|
| BLK KEYSTONE BLOCKWORK - CHARCOAL | ES OFFICE EXPOSED STEEL & OFFICE ENTRY AWNING - MONUMENT | GL-1 CLEAR GLAZING - LIGHT GREY TINT OR SIMILAR |
| MDR METAL DECK ROOFING COLORBOND - SURFMIST | MRS ROLLER SHUTTER DOORS - COLOUR TO MATCH BACKGROUND CLADDING COLOUR | MESH STEEL PAINT FINISH: 3 COAT EPOXY SYSTEM (PRIMER COAT & 2 PART EPOXY FINISH COAT) - MONUMENT |
| PCP-1 PRECAST CONCRETE - ECOTONE | PCP-2 PRECAST CONCRETE PANELS - SHALE GREY | PCP-3 PRECAST CONCRETE PANELS - MONUMENT |
| PCP-4 PRECAST CONCRETE PANELS - BASALT | PCP-5 PRECAST CONCRETE PANELS - GOODMAN GREEN | PMW-1 PREFINISHED METAL WALL CLADDING - MONUMENT |
| PMW-2 PREFINISHED METAL WALL CLADDING - GOODMAN GREEN | PMW-3 FINESSE PROMISE METAL WALL CLADDING - MONUMENT | PMW-4 PREFINISHED METAL WALL CLADDING - SHALE GREY |
| PMW-5 PREFINISHED METAL WALL CLADDING - BASALT | WH STEEL WINDOW HOOD - MONUMENT | FRM PREFINISHED ALUMINIUM - WINDOW FRAME - MONUMENT |
| DP DOWNPIPE COLOUR TO MATCH BACKGROUND CLADDING COLOUR | PAV PAVER, GREY BRICK, HERRINGBONE PATTERN | TMB TIMBER LOOK PANELS, ALUMINIUM CLK ON PANELS, SCULPTFORM |
| SC STEEL CABLE, PAINT FINISH: 3 COAT EPOXY SYSTEM (PRIMER COAT & 2 PART EPOXY FINISH COAT) - MONUMENT - WITH CLIMBING PLANTS | SP SOLAR PANELS | MB METAL BALUSTRADE, MONUMENT |
| PL 1m x 1m ABOVE GROUND PLANTER WITH TIMBER TABLE | TRS-1 TRANSLUCENT ROOF SHEET, OPAL COLOUR | BRK BRICKWORK - GERTRUDIS BROWN |

FOR CC

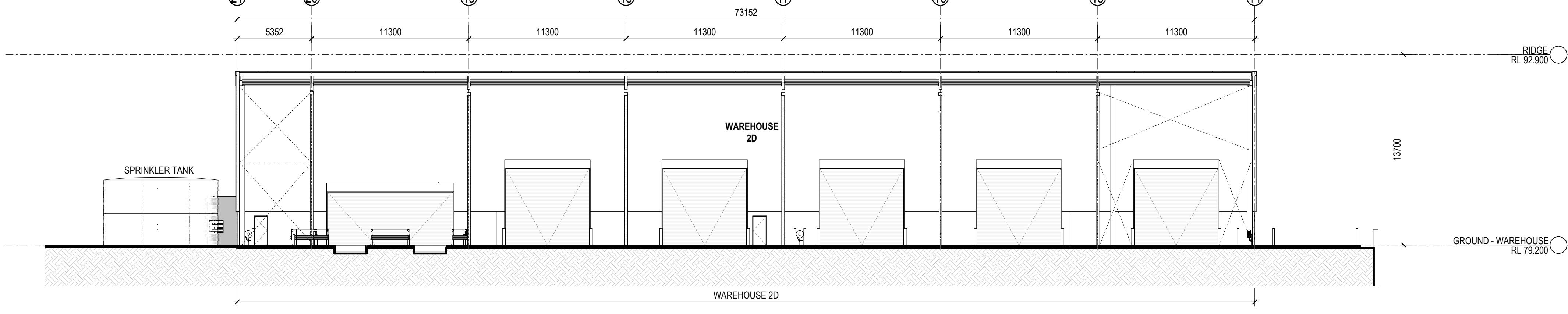




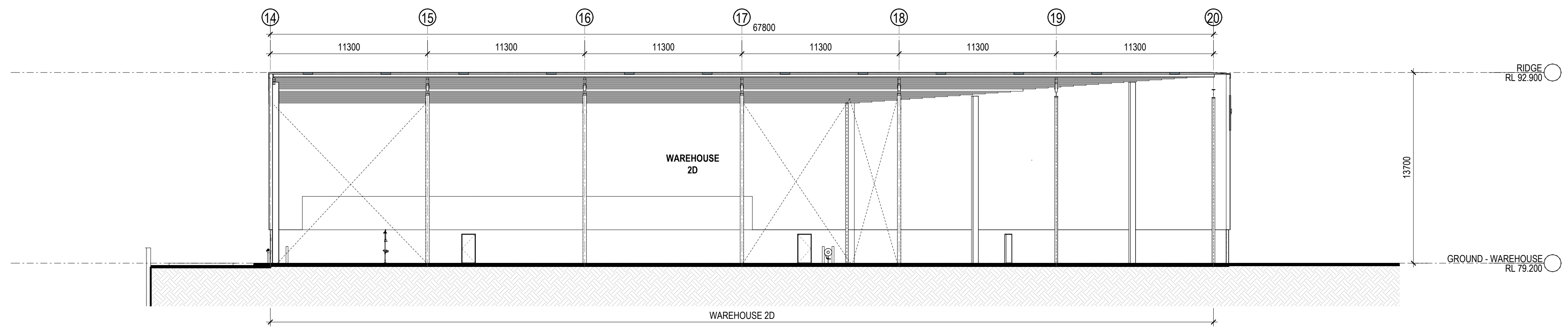
1 SECTION 1 - WAREHOUSE 2C1 & 2C2 1 : 200



2 SECTION 2 - WAREHOUSE 2C1 & 2C2 1 : 200



3 SECTION 1 - WAREHOUSE 2D 1 : 200



4 SECTION 2 - WAREHOUSE 2D 1 : 200

CONSTRUCTION CERTIFICATE 1 APPROVAL SCOPE:
EARTHWORKS, RETAINING WALLS, IN-GROUND
SERVICES (NON-FIRE RELATED), STRUCTURE & ROOF

FOR CC