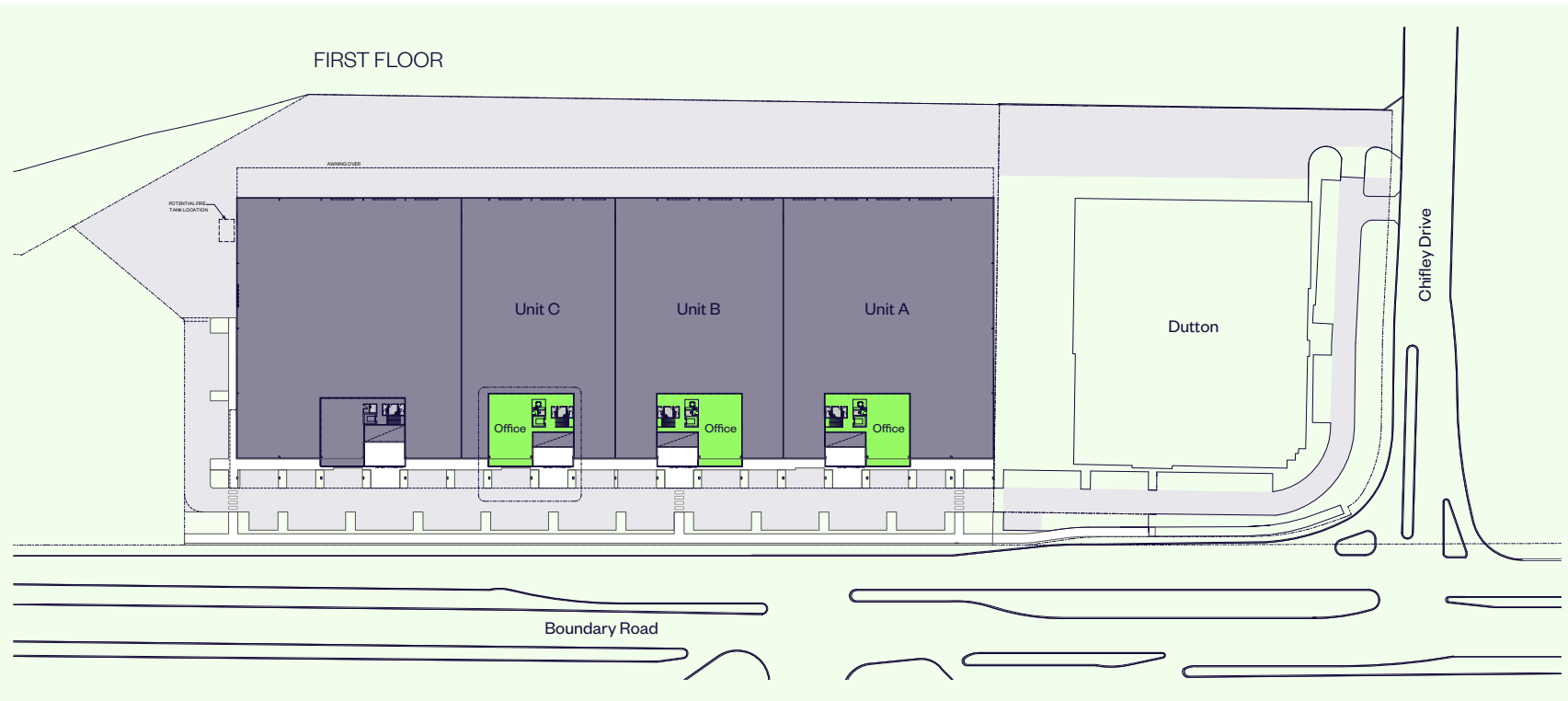
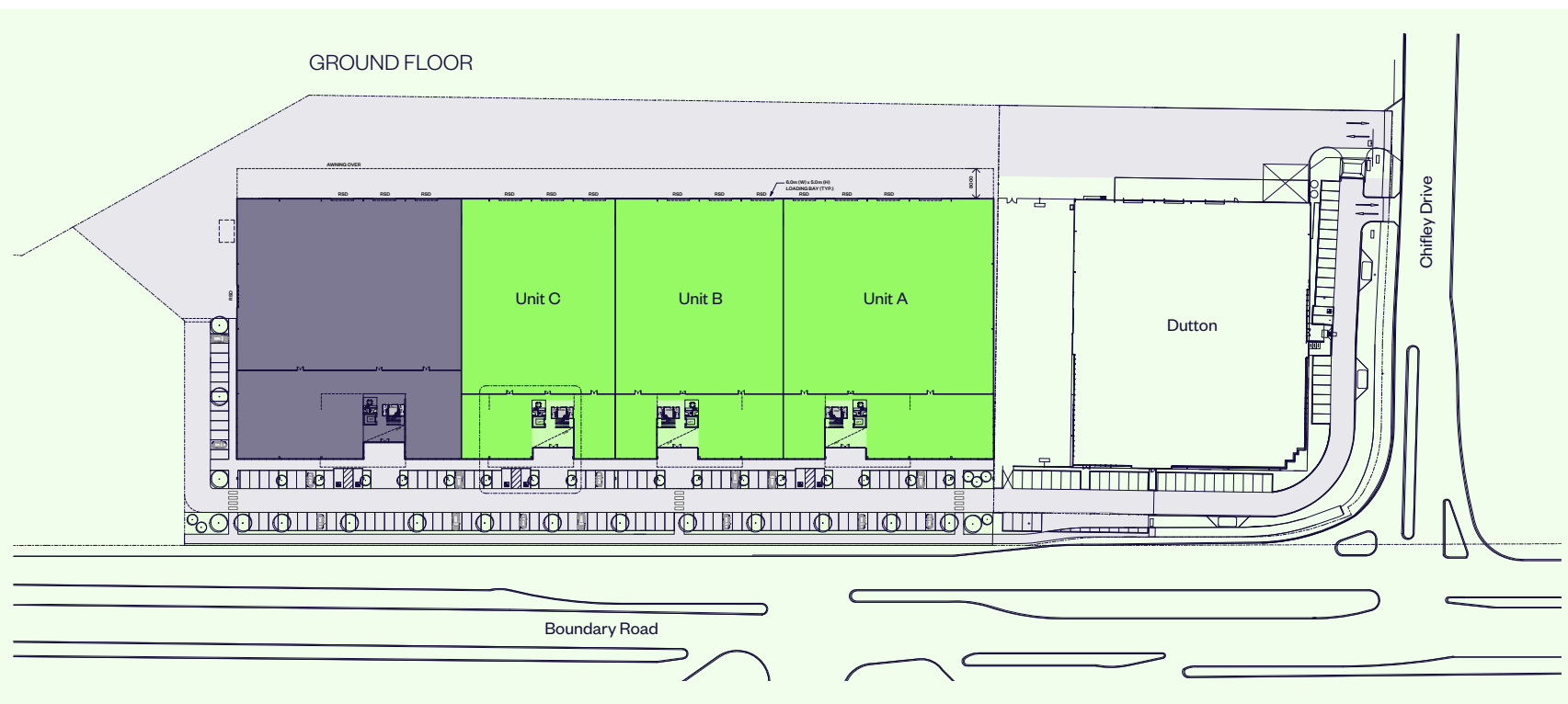


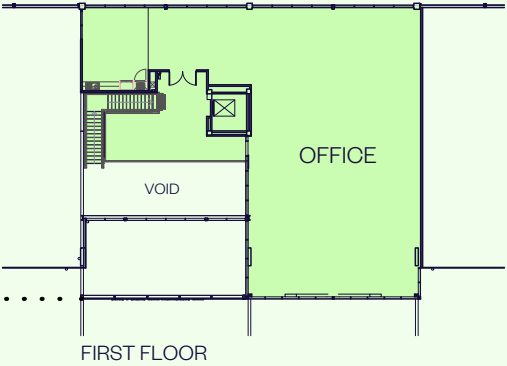
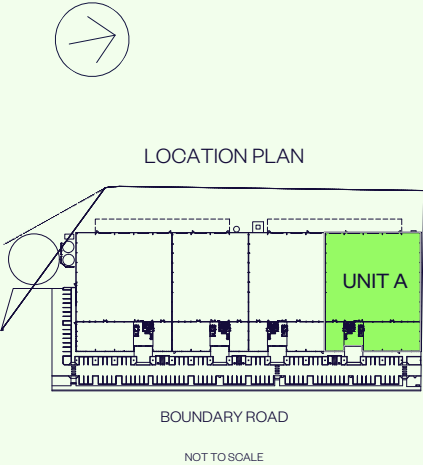
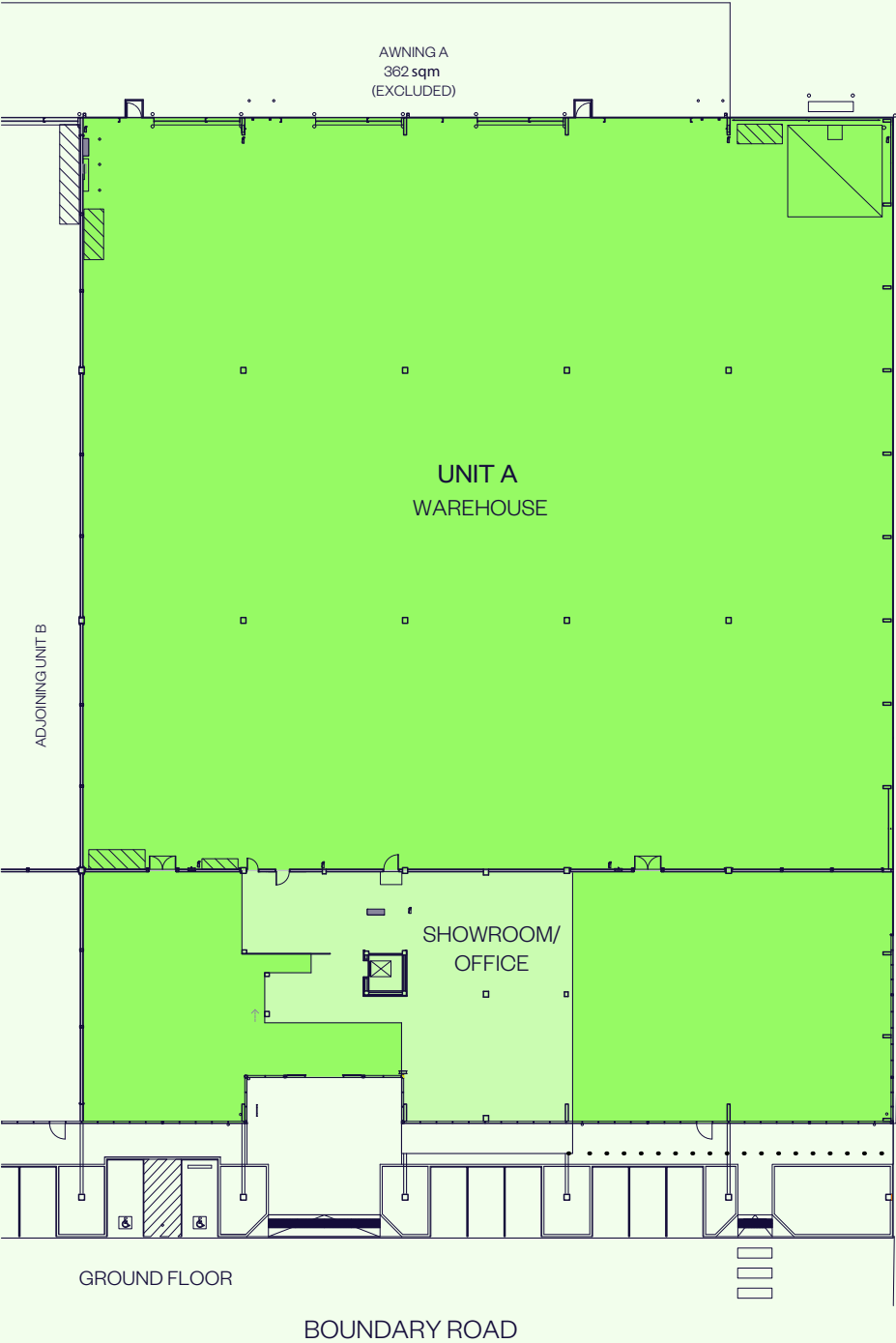
# BUILDING PLANS

| AREA SCHEDULE               | SQM           |
|-----------------------------|---------------|
| Unit A                      |               |
| Showroom/office             | 959           |
| First floor office          | 353           |
| Warehouse                   | 2,986         |
| <b>Total Unit A</b>         | <b>4,299</b>  |
| Unit B                      |               |
| Showroom/office             | 759           |
| First floor office          | 353           |
| Warehouse                   | 2,381         |
| <b>Total Unit B</b>         | <b>3,493</b>  |
| Unit C                      |               |
| Showroom/office             | 759           |
| First floor office          | 354           |
| Warehouse                   | 2,381         |
| <b>Total Unit C</b>         | <b>3,493</b>  |
| <b>Total warehouse area</b> | <b>7,748</b>  |
| <b>Total office area</b>    | <b>3,535</b>  |
| <b>Total building area</b>  | <b>11,283</b> |
| Car parking                 | 136 spaces    |



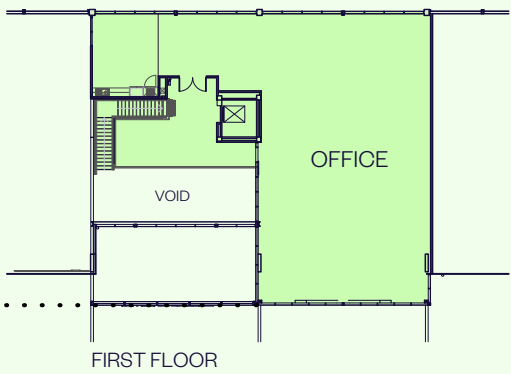
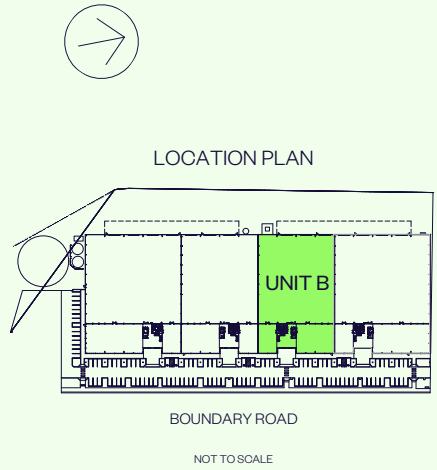
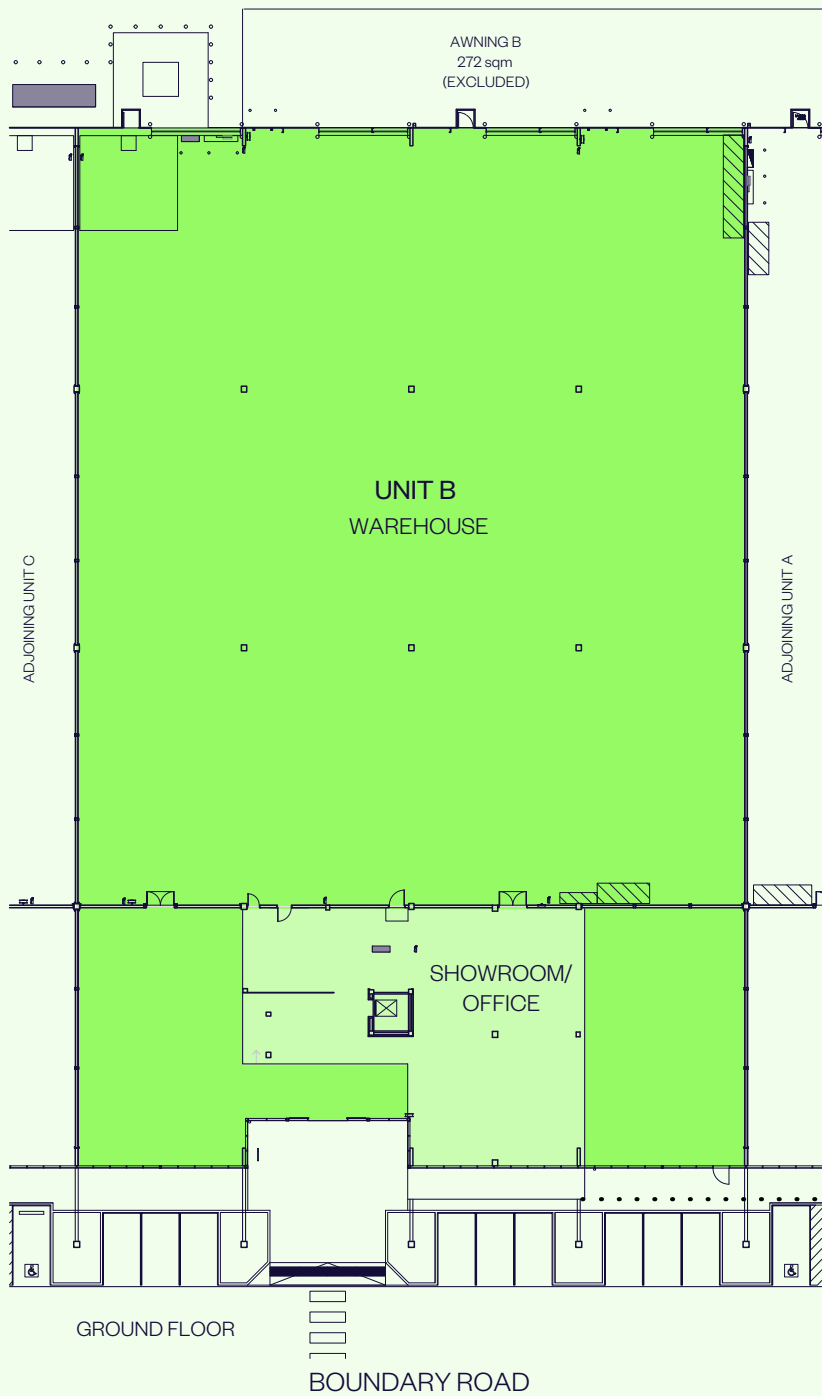
# UNIT A PLAN

| AREA SCHEDULE       | SQM          |
|---------------------|--------------|
| Showroom/office     | 959          |
| First floor office  | 353          |
| Warehouse           | 2,986        |
| <b>Total Unit A</b> | <b>4,299</b> |



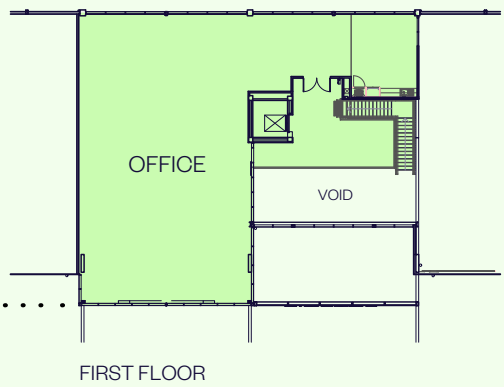
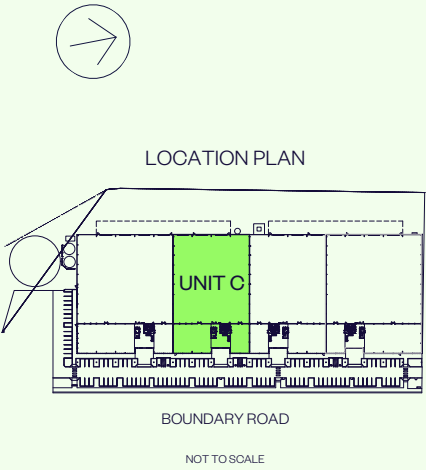
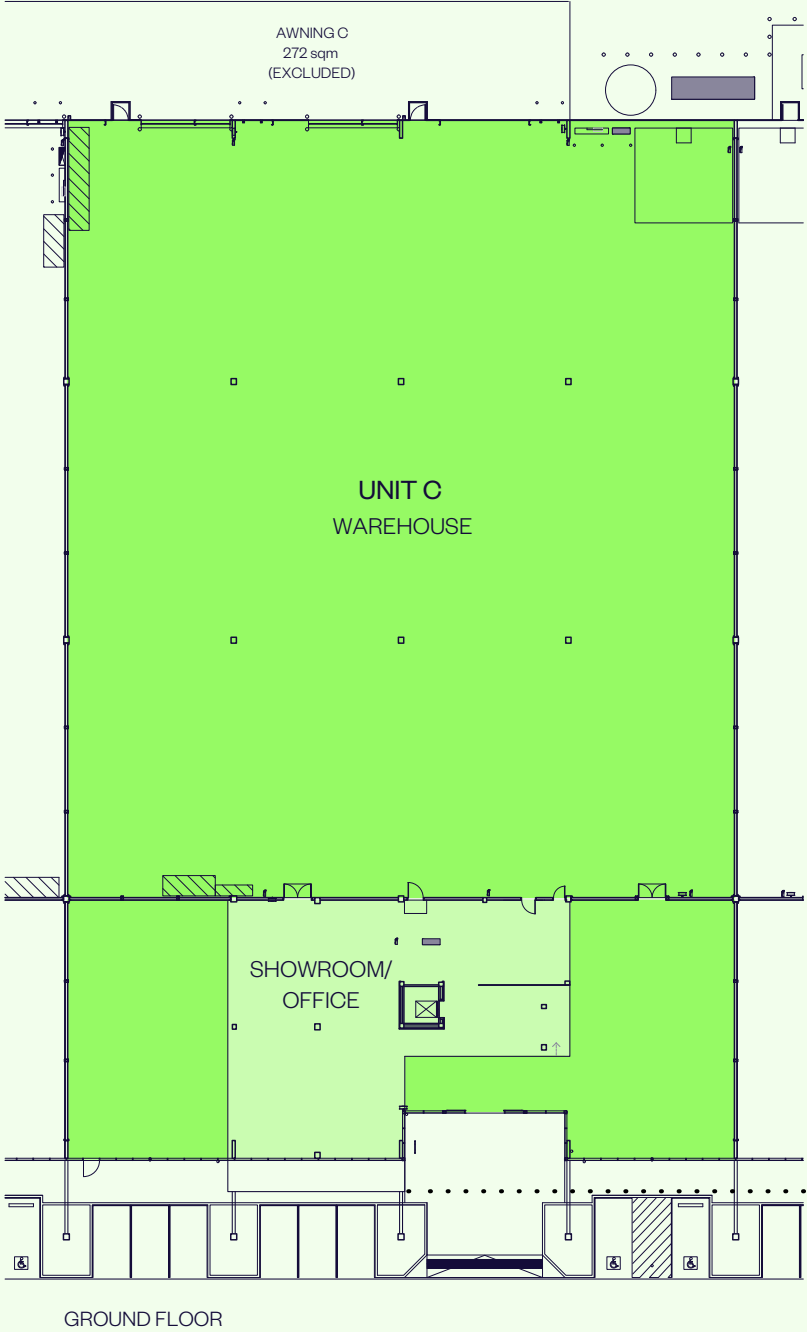
# UNIT B PLAN

| AREA SCHEDULE       | SQM          |
|---------------------|--------------|
| Showroom/office     | 759          |
| First floor office  | 353          |
| Warehouse           | 2,381        |
| <b>Total Unit B</b> | <b>3,493</b> |



# UNIT C PLAN

| AREA SCHEDULE       | SQM          |
|---------------------|--------------|
| Showroom/office     | 759          |
| First floor office  | 354          |
| Warehouse           | 2,381        |
| <b>Total Unit C</b> | <b>3,493</b> |



# CAR PARKING PLAN

## TOTAL CAR PARKS

|                            |            |
|----------------------------|------------|
| Total car parks            | 130        |
| Total accessible car parks | 6          |
| <b>Total car parks</b>     | <b>136</b> |

## GREEN STAR REQUIREMENTS

(129 total car parks)

|   |    |
|---|----|
| EV charging (5% of total)               | 7  |
| Future EV charging (20% of total)       | 26 |
| Car share (2 req.)                      | 2  |
| Fuel efficient car parks (15% of total) | 20 |
| Bicycle parking racks (5% of occupants) | 10 |

