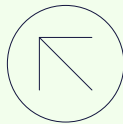


# BUILDING B, LEVEL 1, SUITE 1.02 PLAN

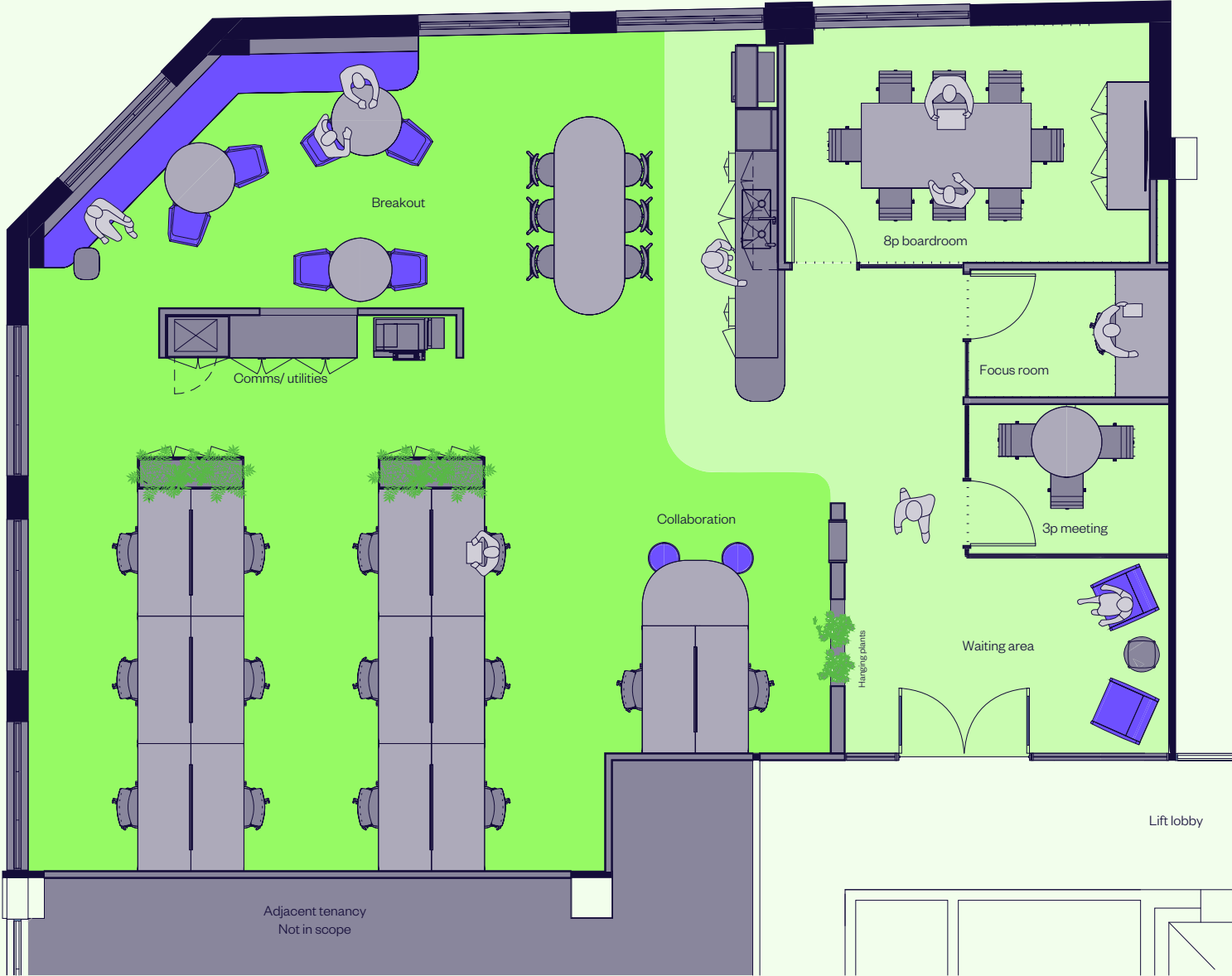


AREA SCHEDULE	SQM
Suite 1.02	
Office	667.0
<b>Total building area</b>	<b>667.0</b>
Features	QTY
Entry/waiting	1
Boardroom	1
4P Meeting rooms	4
Quiet rooms	1
Office	7
Communication room	1
Kitchen/breakout	1
Utilities	1
Workstations	42



# BUILDING B, LEVEL 2, SUITE 2.01- INDICATIVE FITOUT PLAN

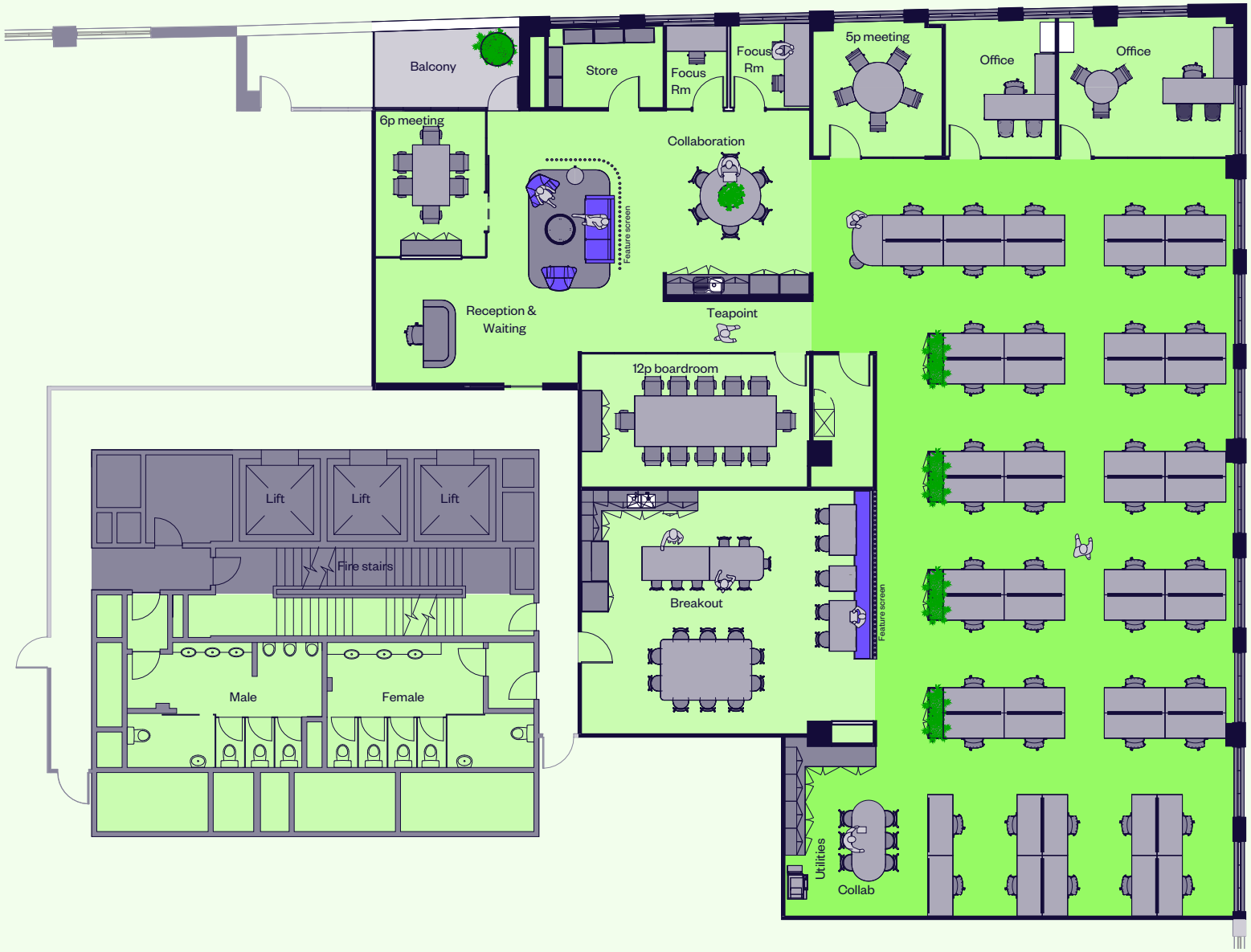
AREA SCHEDULE	SQM
Suite 2.01	
Office	324.0
<b>Total building area</b>	<b>324.0</b>
Features	QTY
Workstations	12
Quiet rooms	1
Focus room	1
3p meeting room	1
Boardroom	1
Breakout/kitchenette	1
Collaboration station	1



# BUILDING B, LEVEL 3, SUITE 3.01 – INDICATIVE FITOUT PLAN



AREA SCHEDULE	SQM
Suite 3.01	
Office	548.4
<b>Total building area</b>	<b>548.4</b>
Features	QTY
Reception	1
Focus room	2
6p meeting room	1
5p meeting room	1
Office	2
Boardroom	1
Communications room	1
Breakout/kitchenette	1
Utilities	1
Storeroom	1
Workstations	52



# BUILDING C, LEVEL 4 PLAN

**AREA SCHEDULE** **SQM**

Suite 4.01

**Total building Area** **1,480**

**Features** **QTY**

10p boardroom with operable wall 2

Meeting room 5

Quiet room 6

Executive office 3

Open plan workstation (available room for more) 120

Large breakout room 1

Townhall 1

Kitchen area 1

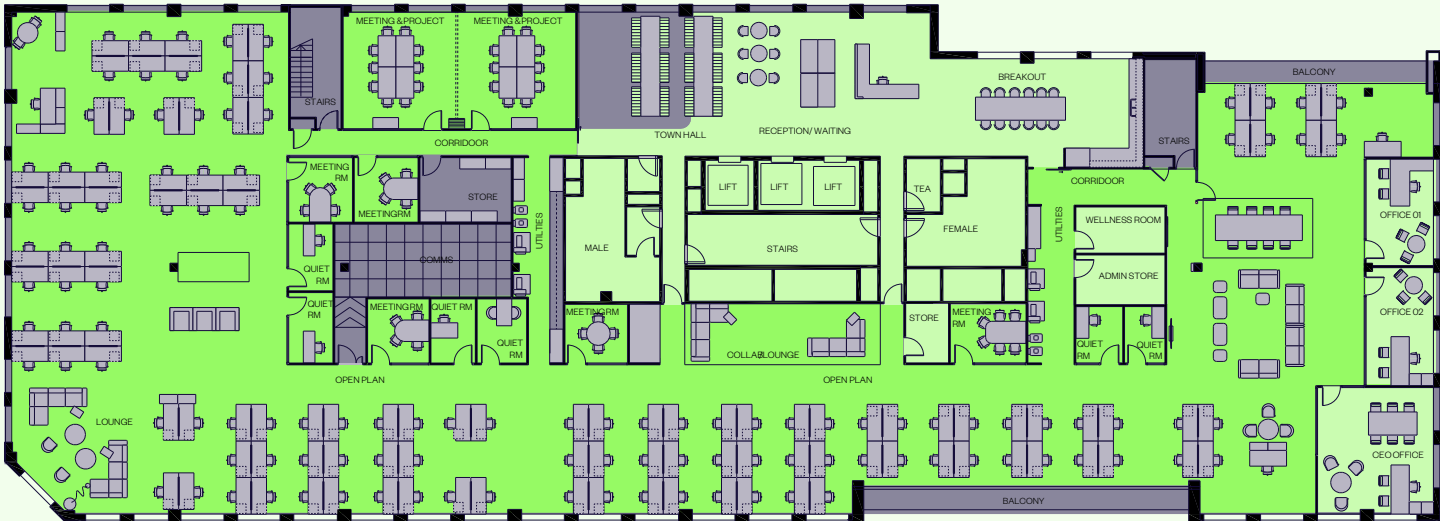
Utilities 2

Store room 2

Admin room 2

Multiple collaborative areas

Additional storage space available in the basement carpark



# BUILDING B, LEVEL 5 PLAN

AREA SCHEDULE	SQM
Suite 5.01	
<b>Total building area</b>	<b>432.8</b>

SAUNDERS STREET

